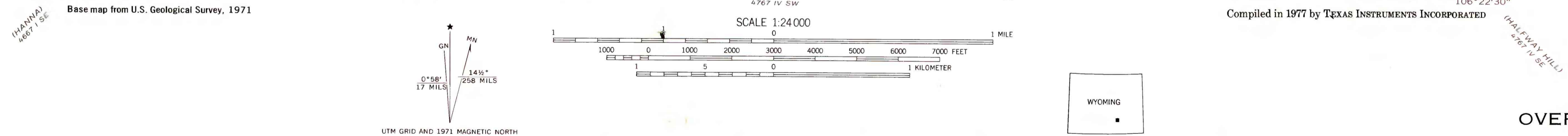
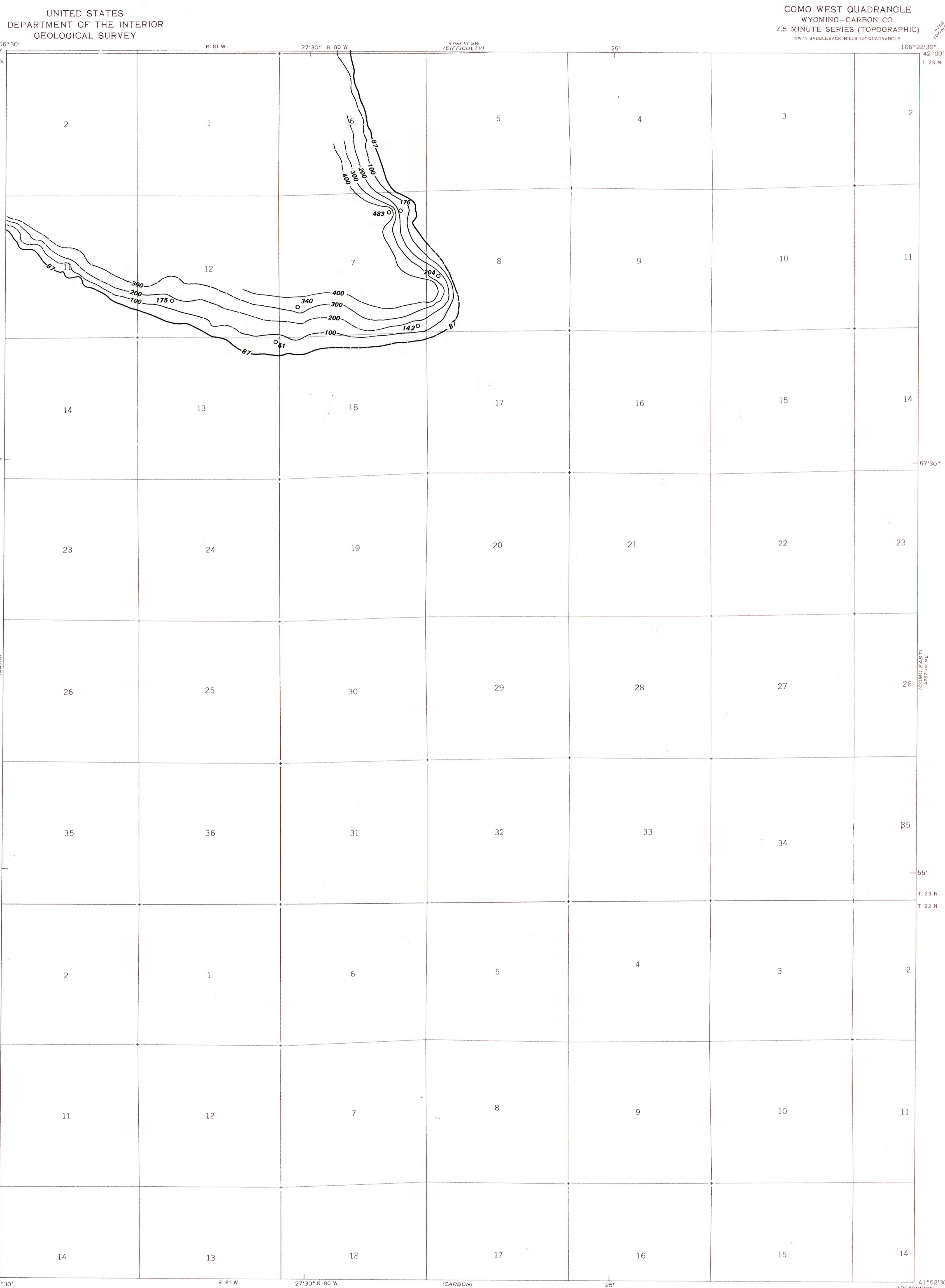


EXPLANATION

OVERBURDEN ISOPACH—Showing thickness of overburden, in feet, from the surface to the top of the coal bed. Isopach interval 100 feet (30.4m). Dashed where inferred.

DRILL HOLE—Showing thickness of overburden, in feet, from the surface to the top of the coal bed. Drill holes which do not intersect top of coal bed or from which bed elevation could not be determined are not shown.

To convert feet to meters, multiply feet by 0.3048.



**COAL RESOURCE OCCURRENCE MAP OF THE COMO WEST QUADRANGLE,  
 CARBON COUNTY, WYOMING**

**BY  
 TEXAS INSTRUMENTS INCORPORATED  
 1978**