

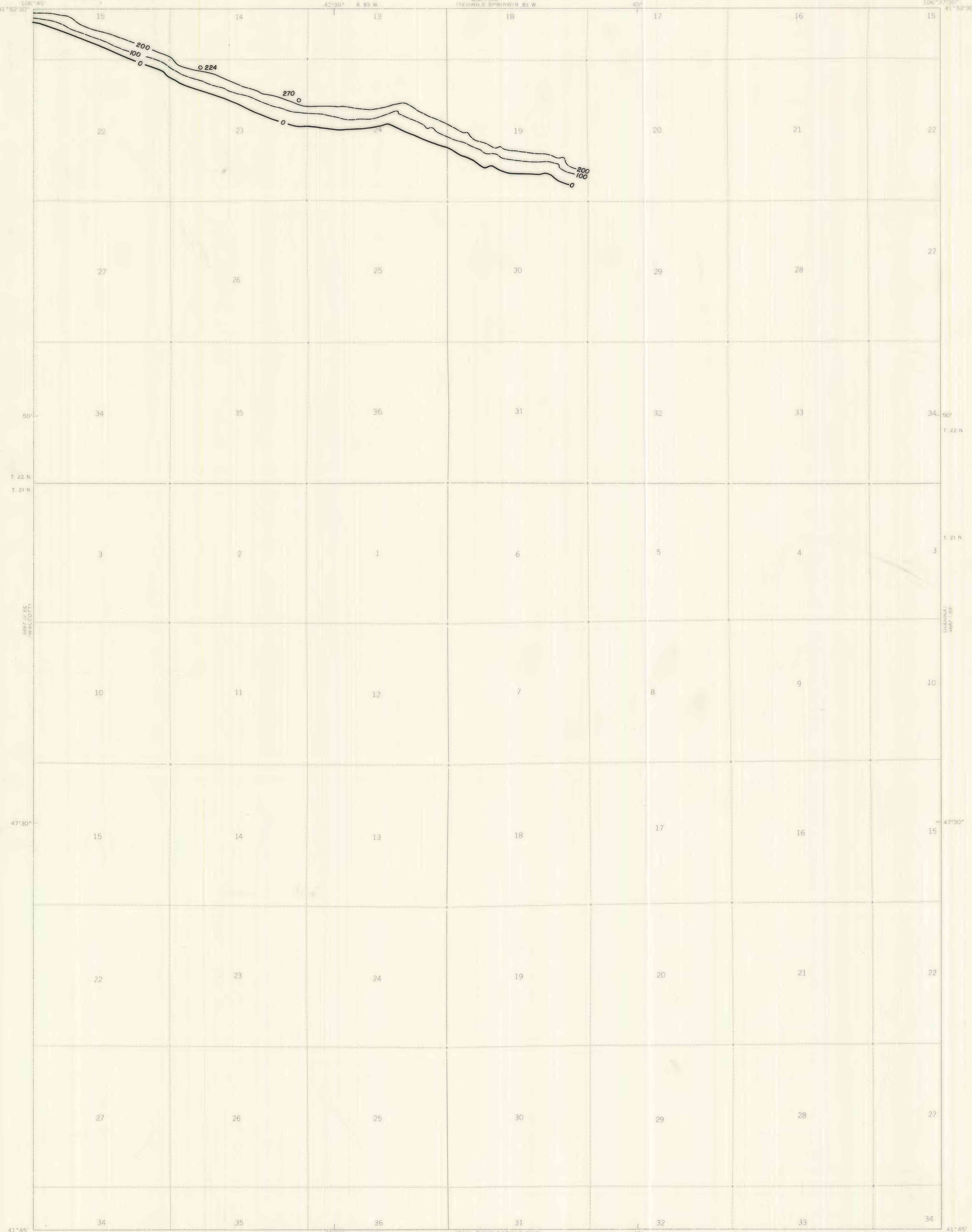
OVERBURDEN ISOPACH—Showing thickness of overburden, in feet, from the surface to the top of the coal bed. Isopach interval 100 feet (30.4m). Dashed where inferred.

DRILL HOLE—Showing thickness of overburden, in feet, from the surface to the top of the coal bed. Drill holes which do not intersect top of coal bed or from which bed elevation could not be determined are not shown.

To convert feet to meters, multiply feet by 0.3048.

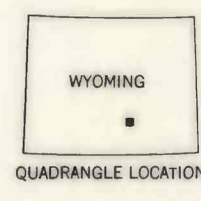
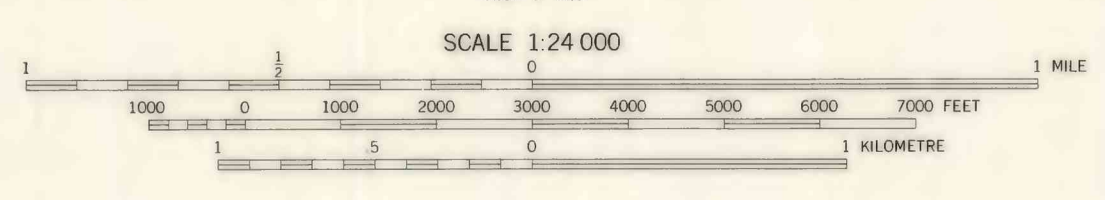
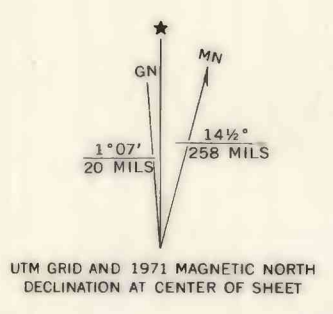
UNITED STATES
 DEPARTMENT OF THE INTERIOR
 GEOLOGICAL SURVEY

DANA QUADRANGLE
 WYOMING—CARBON CO.
 7.5 MINUTE SERIES (TOPOGRAPHIC)



Base map from U.S. Geological Survey, 1971

Compiled in 1977 by TEXAS INSTRUMENTS INCORPORATED



**COAL RESOURCE OCCURRENCE MAP OF THE DANA QUADRANGLE,
 CARBON COUNTY, WYOMING**

**BY
 TEXAS INSTRUMENTS INCORPORATED
 1978**