

EXPLANATION

KRCEA  
BOUNDARY

KNOWN RECOVERABLE COAL RE-  
SOURCE AREA—Area in which the  
Federal coal land is classified, (1) as sub-  
ject to the coal leasing provisions of the  
Mineral Leasing Act of 1920, as amended  
and (2) by virtue of the available data  
being sufficient to permit evaluation as to  
extent, location, and potential for devel-  
oping commercial quantities of coal.

NON-FEDERAL COAL LAND—Land for  
which the Federal Government does not  
own the coal rights.

RB .07

TOTAL RESERVE BASE (RB) OF FED-  
ERAL COAL PER SECTION—In millions  
of short tons, calculated for each section  
of Federal land following guidelines given  
in U.S. Geol. Survey Bulletin 1450-B. To  
convert short tons to metric tons, multiply  
short tons by 0.9072.

4	3	2	1
5			
6			
7			

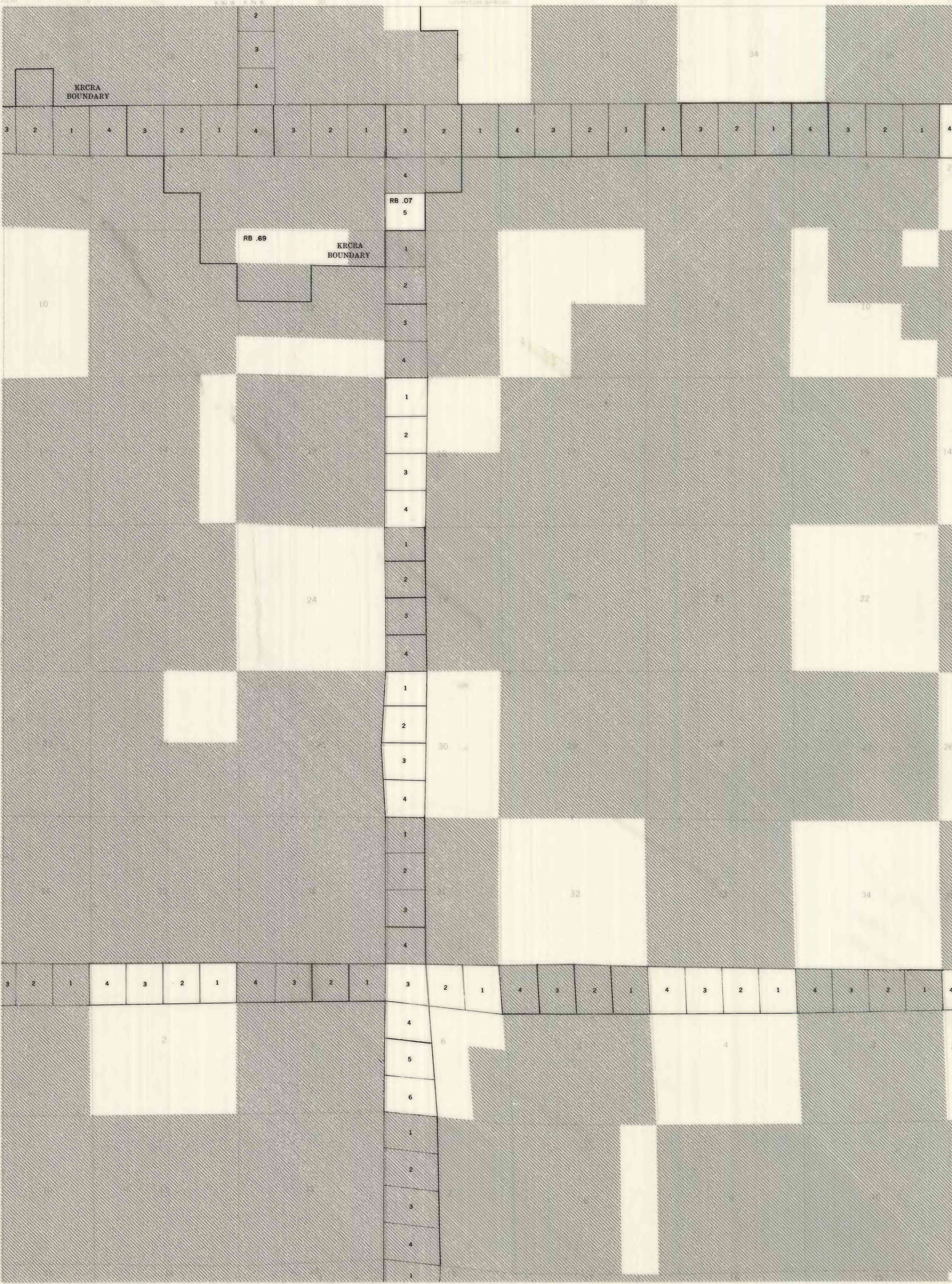
SECTION OF LAND  
Showing lots and lot numbers

REFERENCE  
U.S. Bureau of Mines and U.S. Geological  
Survey, 1976, Coal resource classification  
system of the U.S. Bureau of Mines and  
U.S. Geological Survey: U.S. Geol. Survey  
Bull. 1450-B, 7 p. Information derived  
from U.S. Bureau of Land Management  
Master Title plats and Coal plats issued  
April 22, 1977, and from oral communica-  
tion, BLM State Office, Cheyenne,  
Wyoming.

OPEN FILE REPORT  
This report has not been edited for con-  
formity with U.S. Geological Survey edito-  
rial standards or stratigraphic nomencla-  
ture.

UNITED STATES  
DEPARTMENT OF THE INTERIOR  
GEOLOGICAL SURVEY

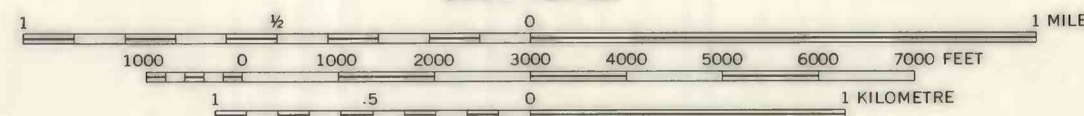
T L RANCH QUADRANGLE  
WYOMING (SECTION 10)  
15 MINUTE SERIES (TOPOGRAPHIC)



Base map from U.S. Geological Survey, 1958

SCALE 1:24 000

Compiled in 1977 by TEXAS INSTRUMENTS INCORPORATED



TRUE NORTH  
MAGNETIC NORTH  
APPROXIMATE MEAN  
DECLINATION, 1958

WYOMING  
QUADRANGLE LOCATION

COAL RESOURCE OCCURRENCE MAP OF THE TL RANCH QUADRANGLE,  
CARBON COUNTY, WYOMING

BY  
TEXAS INSTRUMENTS INCORPORATED  
1978

PLATE 2  
BOUNDARY AND COAL  
DATA MAP