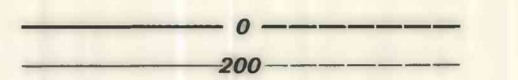


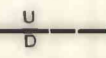
EXPLANATION



OVERBURDEN ISOPACH—Showing thickness of overburden, in feet, from the surface to the top of the coal bed. Isopach interval 100 feet (30.4m). Dashed where inferred.

○157

DRILL HOLE—Showing thickness of overburden, in feet, from the surface to the top of the coal bed. Drill holes which do not intersect top of coal bed or from which bed elevation could not be determined are not shown.



FAULT—Dashed where approximately located. U, upthrown side; D, downthrown side.

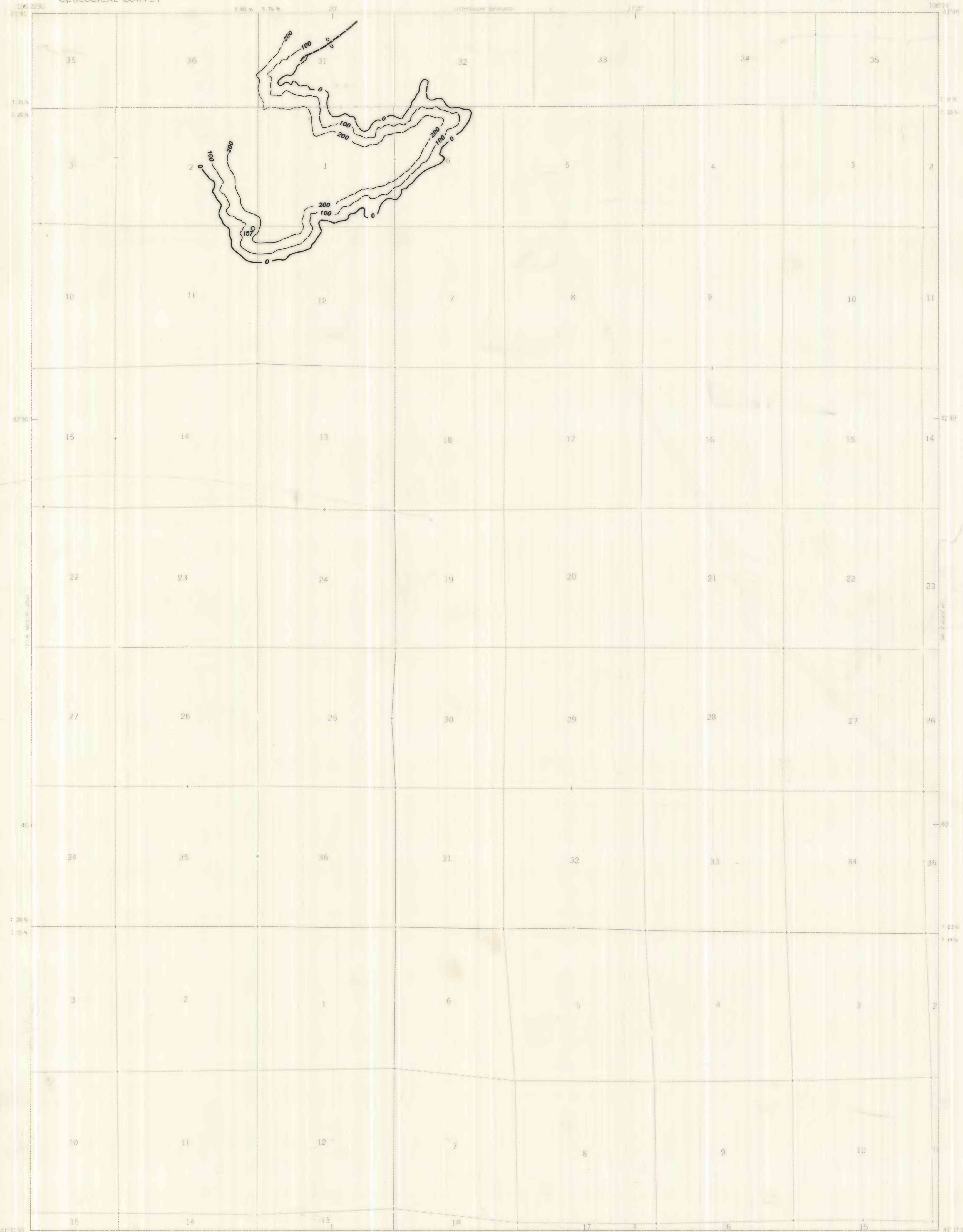
To convert feet to meters, multiply feet by 0.3048.

OPEN FILE REPORT

This report has not been edited for conformity with U.S. Geological Survey editorial standards or stratigraphic nomenclature.

UNITED STATES
DEPARTMENT OF THE INTERIOR
GEOLOGICAL SURVEY

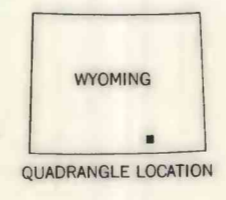
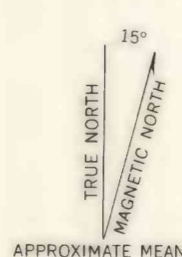
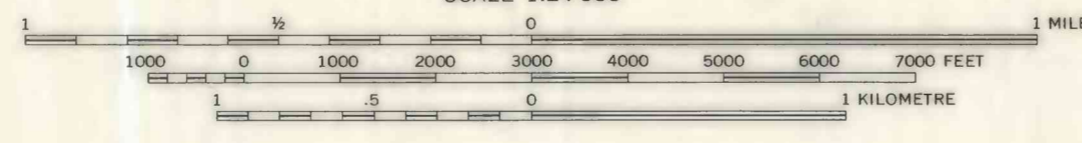
T L RANCH QUADRANGLE
WYOMING-CARBON CO
7.5 MINUTE SERIES (TOPOGRAPHIC)



Base map from U.S. Geological Survey, 1958

SCALE 1:24 000

Compiled in 1977 by TEXAS INSTRUMENTS INCORPORATED



**COAL RESOURCE OCCURRENCE MAP OF THE TL RANCH QUADRANGLE,
CARBON COUNTY, WYOMING
BY
TEXAS INSTRUMENTS INCORPORATED
1978**