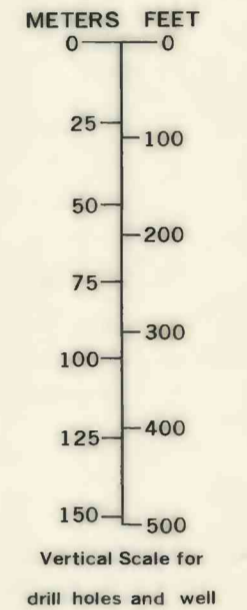
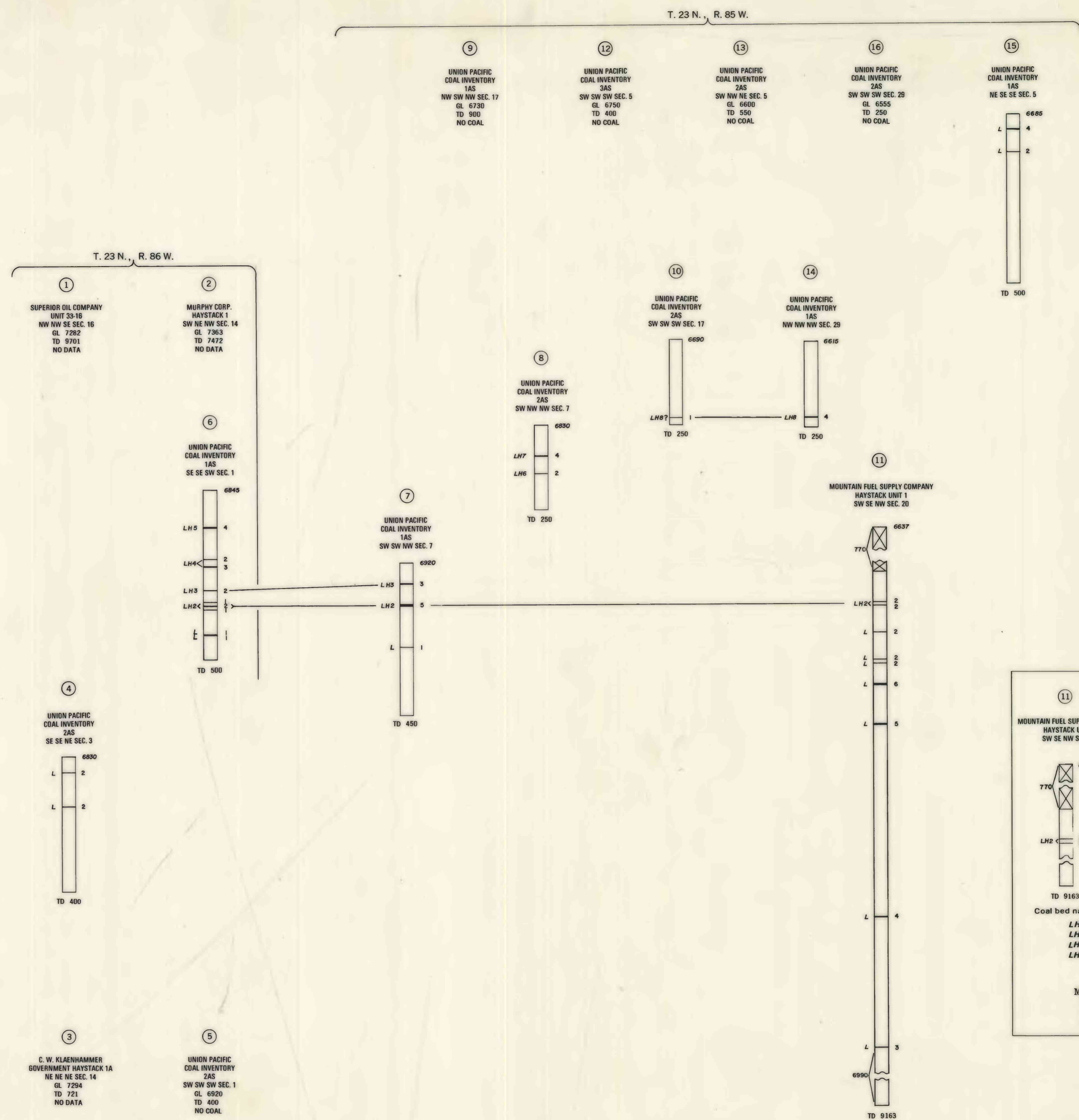
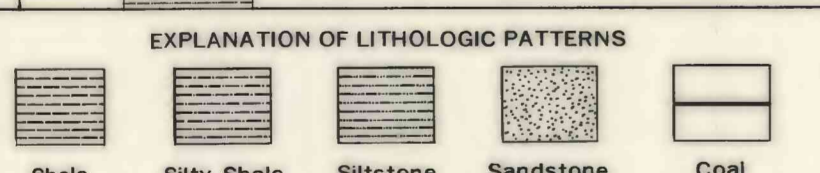
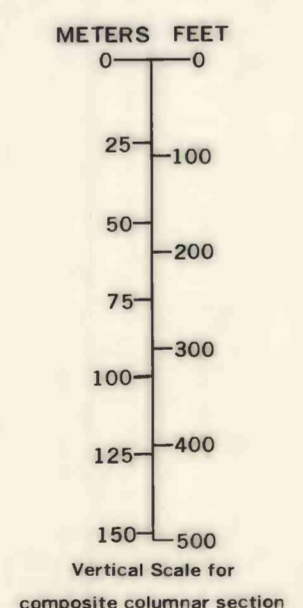
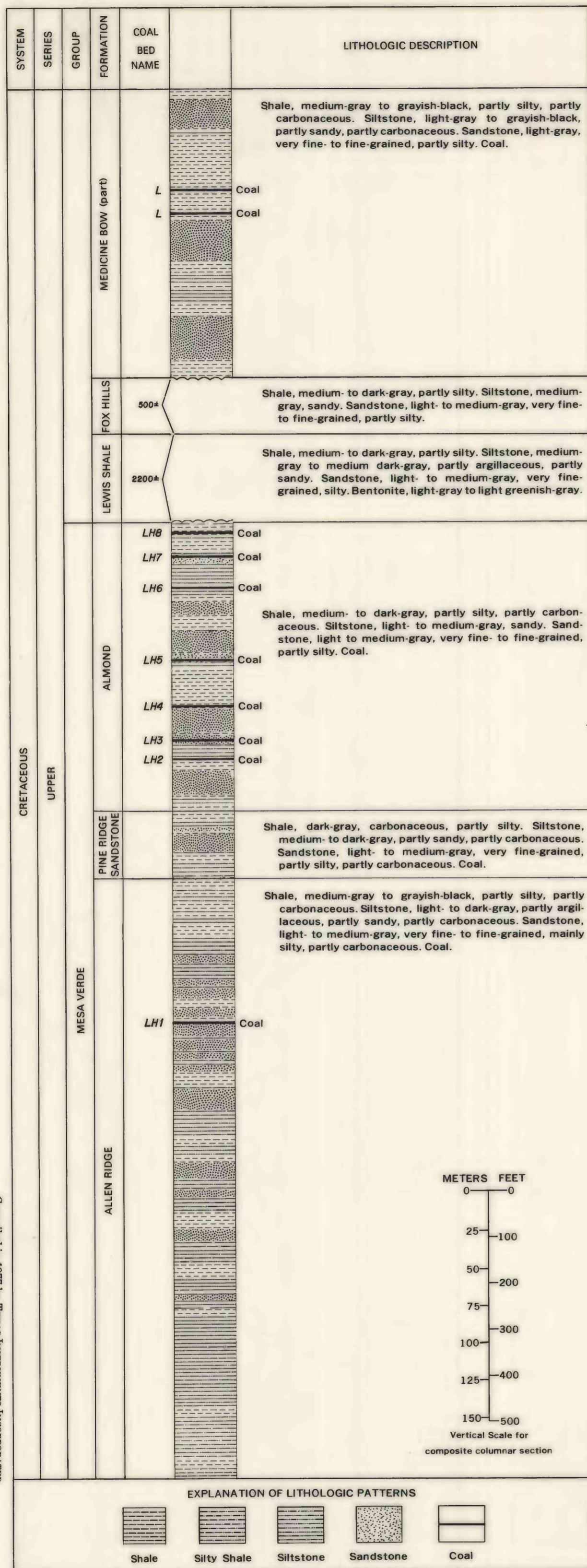


COMPOSITE COLUMNAR SECTION



EXPLANATION

⑪ Index number of drill hole or well

MOUNTAIN FUEL SUPPLY COMPANY HAYSTACK UNIT 1 SW SE NW SEC. 20

Company and drill-hole and well name

Drill-hole or well location

Elevation at surface of drill hole or well

No record

Rock interval

Coal bed, showing thickness in feet

Column shown closed if at total depth; total depth (TD) in feet

Coal bed names and symbols

LH8 = Lone Haystack 8 LH4

LH7 LH3

LH6 LH2

LH5 L = Local lens

 LH = Local bed identifier

REFERENCE

Merewether, E. A., 1978, Geologic map of the Lone Haystack Mountain quadrangle, Carbon County, Wyoming; U.S. Geol. Survey Geol. Quad. Map GQ-1064.

Compiled in 1977 by TEXAS INSTRUMENTS INCORPORATED

PLATE 3
COAL DATA SHEET

COAL RESOURCE OCCURRENCE MAP OF THE LONE HAYSTACK MOUNTAIN QUADRANGLE, CARBON COUNTY, WYOMING
BY
TEXAS INSTRUMENTS INCORPORATED
1978

This report has not been edited for conformity with U.S. Geological Survey editorial standards or stratigraphic nomenclature.

OPEN FILE REPORT
78-062
3 OF 8