

EXPLANATION

UC
TRACE OF COAL BED OUTCROP—Arrow
points toward the coal-bearing area.

BURNED AND CLINKERED COAL BED—
Showing area of baked and fused rock
(v symbol). Dotted line indicates the
inferred limit of burning.

STRUCTURE CONTOURS—Drawn on top
of coal bed. Dashed where coal is burned
or eroded. Contour interval 20 feet (6.1m).
Datum is mean sea level.

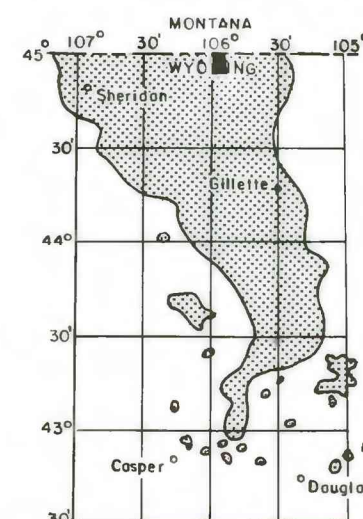
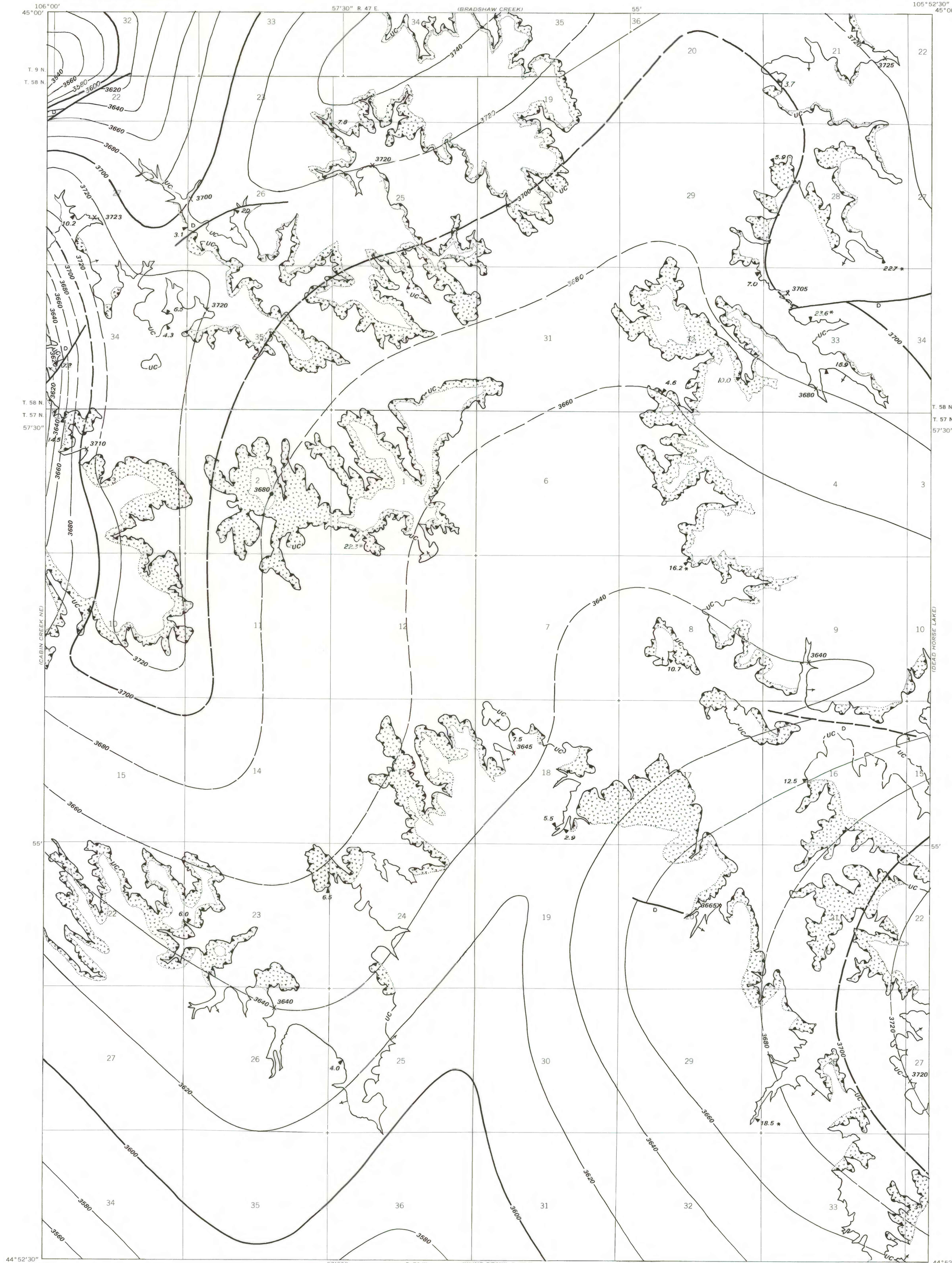
3680

DRILL HOLE—Showing elevation at top of
coal bed, in feet.

3720

INFERRED POINT—Derived from outcrop
elevation plus coal thickness, showing
elevation in feet.

To convert feet to meters multiply feet by
0.3048.



MAP SHOWING LOCATION OF THE
BLACK DRAW QUADRANGLE AND
THE POWDER RIVER BASIN KNOWN
RECOVERABLE COAL RESOURCE
AREA (STIPPLED), WYOMING

This report has not been edited
for conformity with Geological
Survey editorial standards or
stratigraphic nomenclature.

COAL RESOURCE OCCURRENCE MAP OF THE BLACK DRAW QUADRANGLE,
CAMPBELL COUNTY, WYOMING AND POWDER RIVER COUNTY, MONTANA

BY
IntraSearch
1978

PLATE 15
STRUCTURE CONTOUR MAP OF
THE UPPER CANYON COAL BED