

EXPLANATION

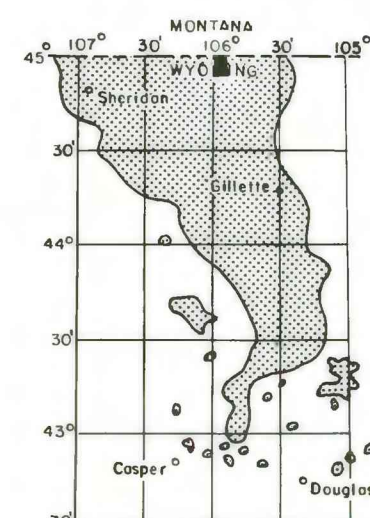
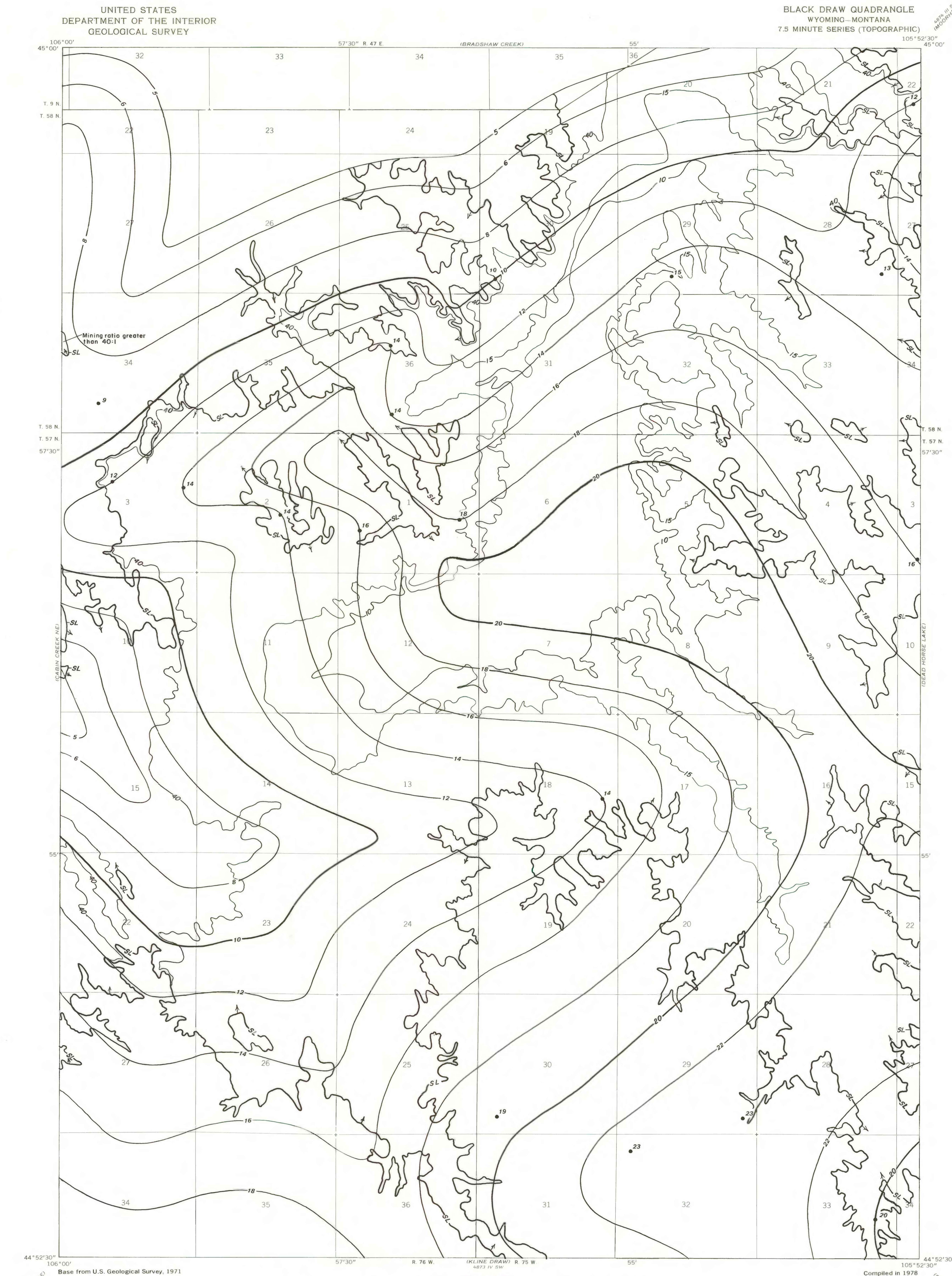
ISOPACHS OF COAL BED—Showing thickness in feet. Isopach interval 2 feet.

DRILL HOLE—Showing thickness of coal bed, in feet.

MINING-RATIO CONTOUR FOR COAL BED—Number indicates cubic yards of overburden per ton of coal by surface-mining methods. Contours shown only in areas suitable for surface mining within the stripping limit.

STRIPPING LIMIT LINE—Boundary for surface mining of the coal bed (in this quadrangle, the 500-foot-overburden isopach). Arrows point toward the area suitable for surface mining. Recovery factor of 95 percent within that area in this quadrangle.

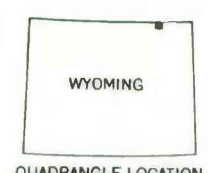
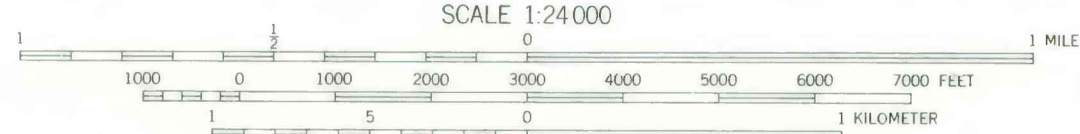
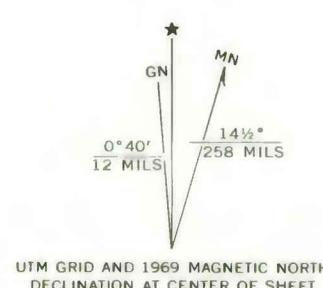
To convert feet to meters multiply feet by 0.3048.



MAP SHOWING LOCATION OF THE BLACK DRAW QUADRANGLE AND THE POWDER RIVER BASIN KNOWN RECOVERABLE COAL RESOURCE AREA (STIPPLED), WYOMING

This report has not been edited for conformity with Geological Survey editorial standards or stratigraphic nomenclature.

(CABIN CREEK SE)
47° 15' N
106° 00' W



COAL RESOURCE OCCURRENCE MAP OF THE BLACK DRAW QUADRANGLE,
CAMPBELL COUNTY, WYOMING AND POWDER RIVER COUNTY, MONTANA

BY
IntraSearch
1978