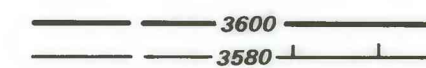


EXPLANATION



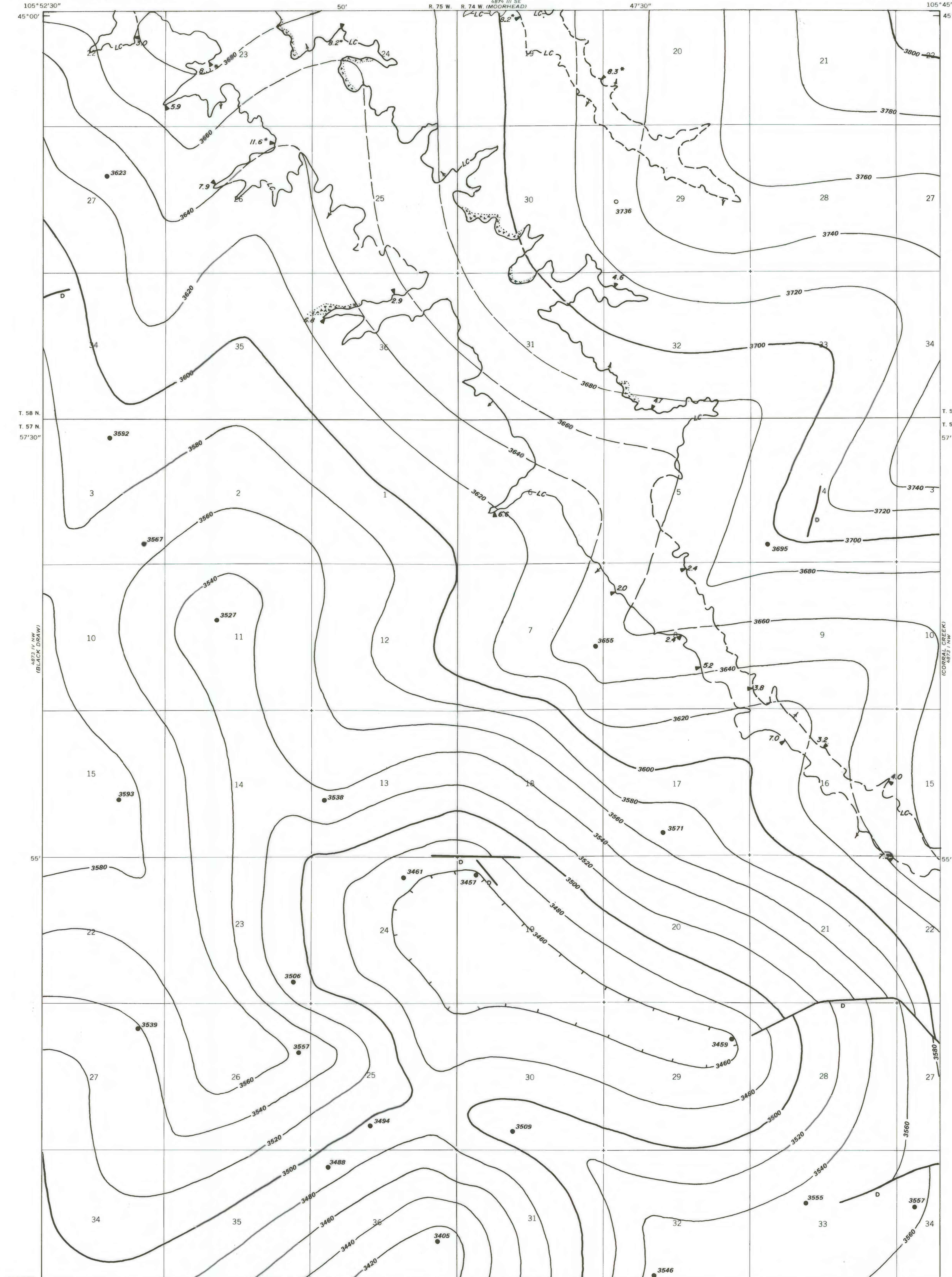
STRUCTURE CONTOURS—Drawn on top of coal bed. Dashed where coal is burned or eroded. Hachures indicate a closed depression. Contour interval 20 feet (6.1m). Datum is mean sea level.

● 3405
DRILL HOLE—Showing elevation at top of coal bed, in feet.

LC
TRACE OF COAL BED OUTCROP—Arrow points toward the coal-bearing area.

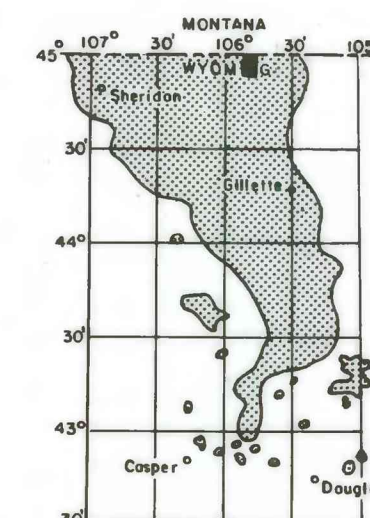
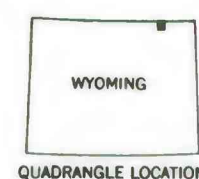
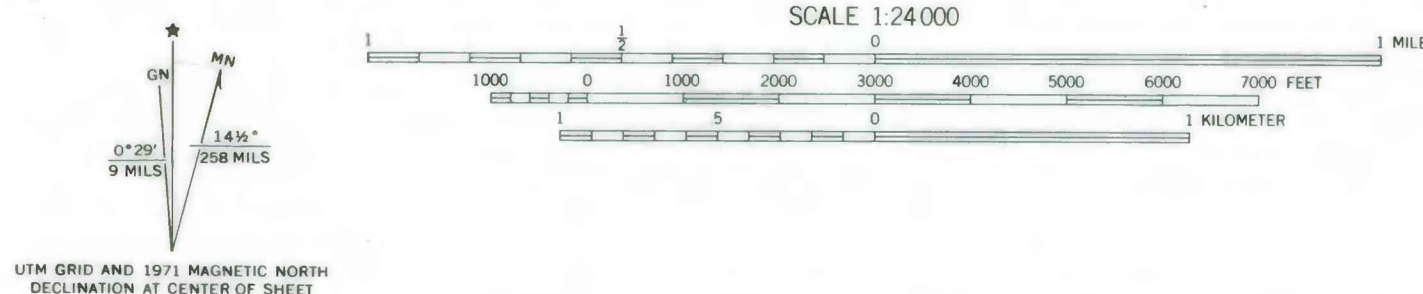
BURNED AND CLINKERED COAL BED
—Showing area of baked and fused rock (v symbol). Dotted line indicates the inferred limit of burning.

To convert feet to meters multiply feet by 0.3048.



Base from U.S. Geological Survey, 1971

Compiled in 1978



MAP SHOWING LOCATION OF THE DEAD HORSE LAKE QUADRANGLE AND THE POWDER RIVER BASIN KNOWN RECOVERABLE COAL RESOURCE AREA (STIPPLED), WYO.

This report has not been edited for conformity with Geological Survey editorial standards or stratigraphic nomenclature.

COAL RESOURCE OCCURRENCE MAP OF THE DEAD HORSE LAKE
QUADRANGLE, CAMPBELL COUNTY, WYOMING

BY
IntraSearch
1978

PLATE 15
STRUCTURE CONTOUR MAP OF
THE LOWER CANYON COAL BED