

R. 11 W. R. 10 W.

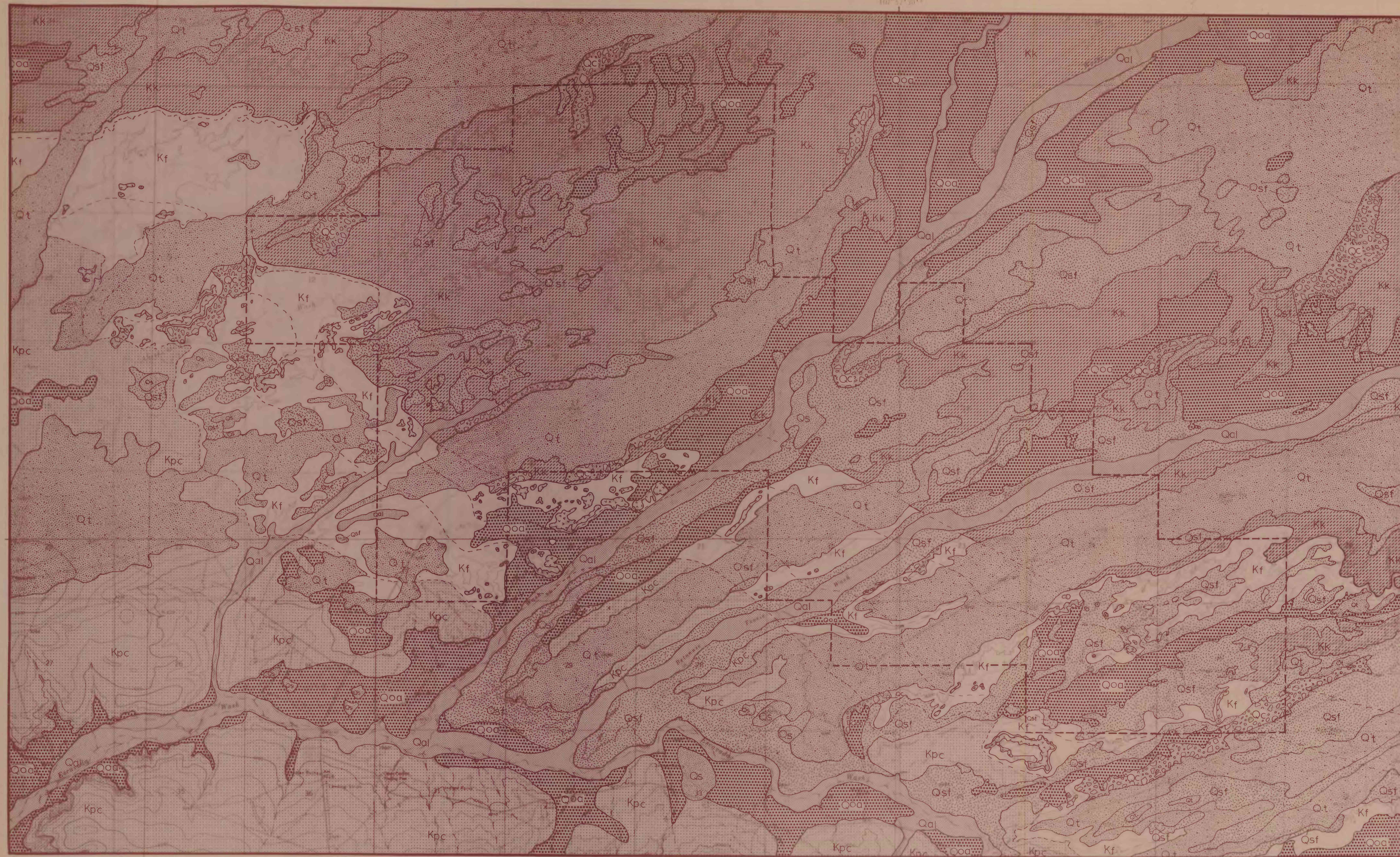
R. 10 E. R. 9 N.

EXPLANATION

T. 23 N.
T. 22 N.

W. 107° 00'

T. 22 N.
T. 21 N.



- QUATERNARY
- Qal ALLUVIUM
 - Qoa SAND, ACTIVE DUNE
 - Qof SAND, FIXED DUNE
 - Qol COLLUVIUM
 - Qt TERRACE, LAG GRAVEL & EOLIAN SAND
 - Qoa OLDER ALLUVIUM
- CRETACEOUS
- K KIRTLAND SHALE
 - Kf FRUITLAND FORMATION
(WITH LOWER, MIDDLE, AND UPPER COAL ZONES; TOP OF
UPPER COAL ZONE IS TOP OF FRUITLAND; BASE OF LOWER
COAL ZONE IS BASE OF FRUITLAND)
 - Kpc PICTURED CLIFFS SANDSTONE
- CLIFFER
 - GEOLOGIC CONTACT
 - BASE OF COAL ZONE, POSITION APPROXIMATE
PROJECTED WHERE CONCEALED
 - NEW MEXICO



Base from U. S. Geological Survey, Kimbeto, Sargent Ranch, Pueblo Bonito, and Pueblo Bonito NW quadrangles, 1968.

Map's geology modified from U. S. Bureau of Reclamation by Gary B. Schneider

PRELIMINARY GEOLOGIC MAP OF THE KIMBETO EMRIA STUDY SITE AREA, KIMBETO, SARGENT RANCH, PUEBLO BONITO,
AND PUEBLO BONITO NW QUADRANGLES, SAN JUAN COUNTY, NEW MEXICO

By
Gary B. Schneider
1978