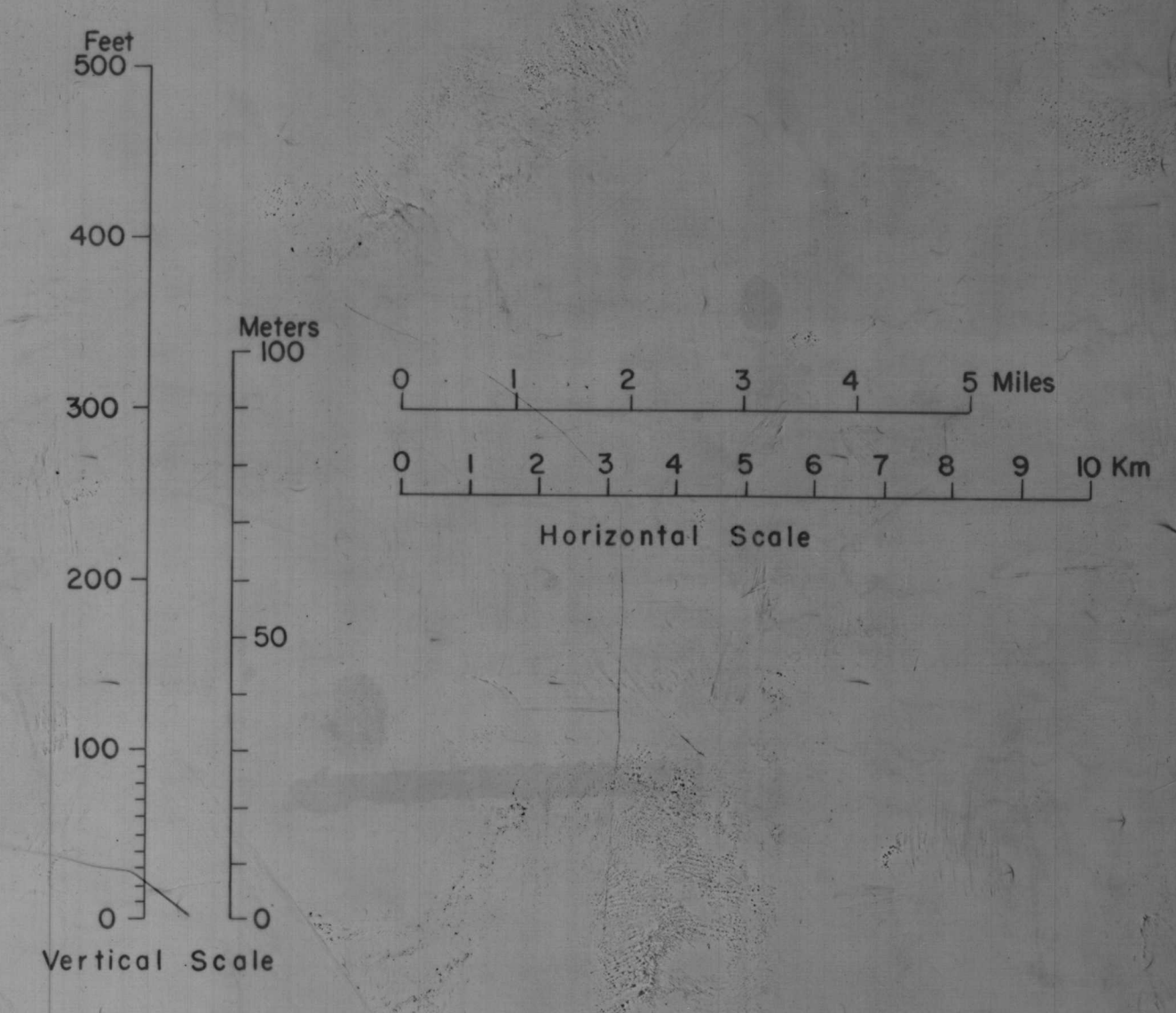
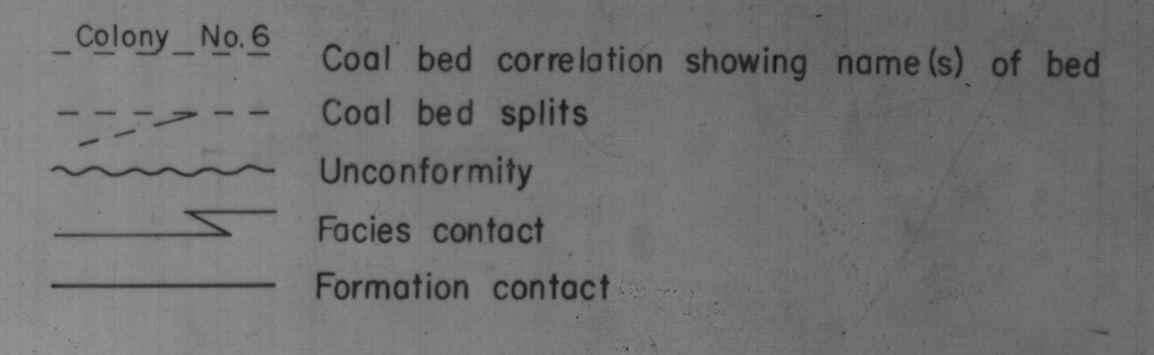
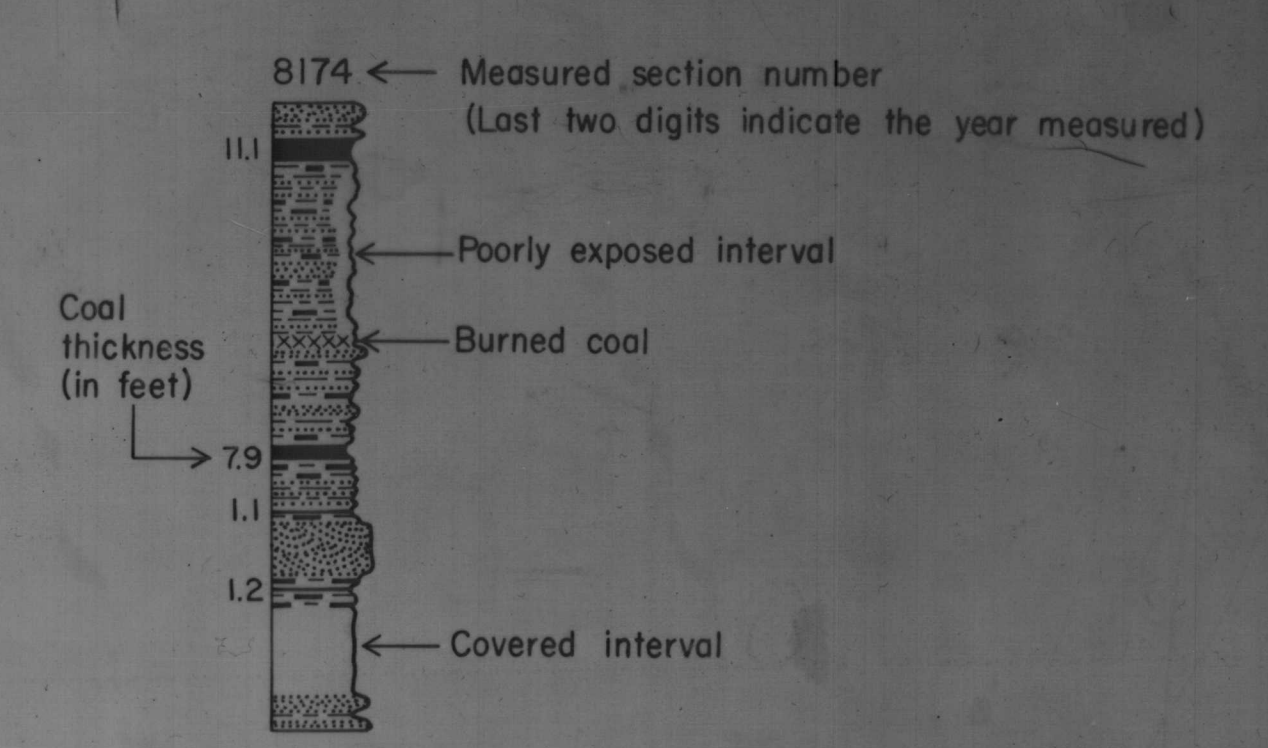
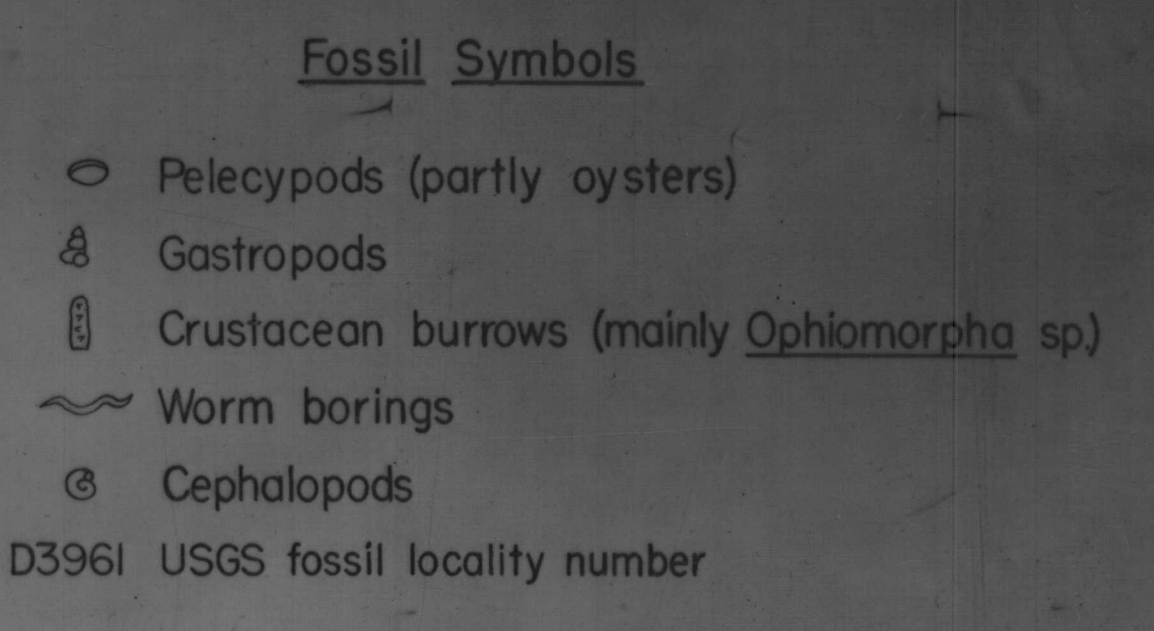
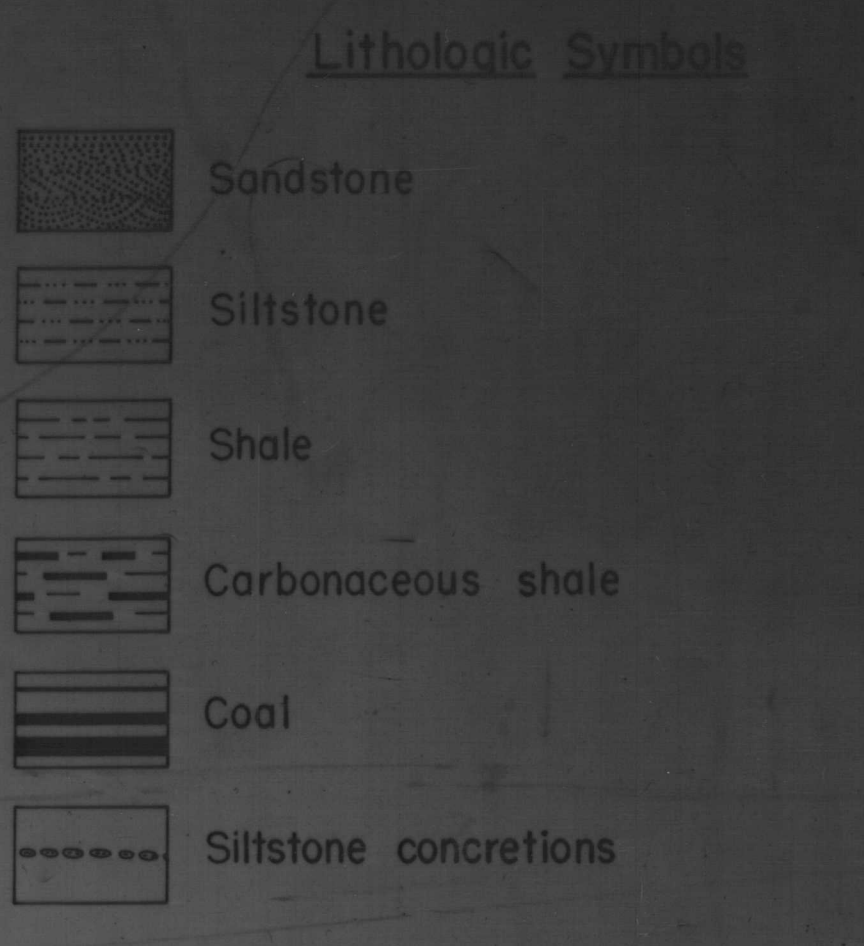


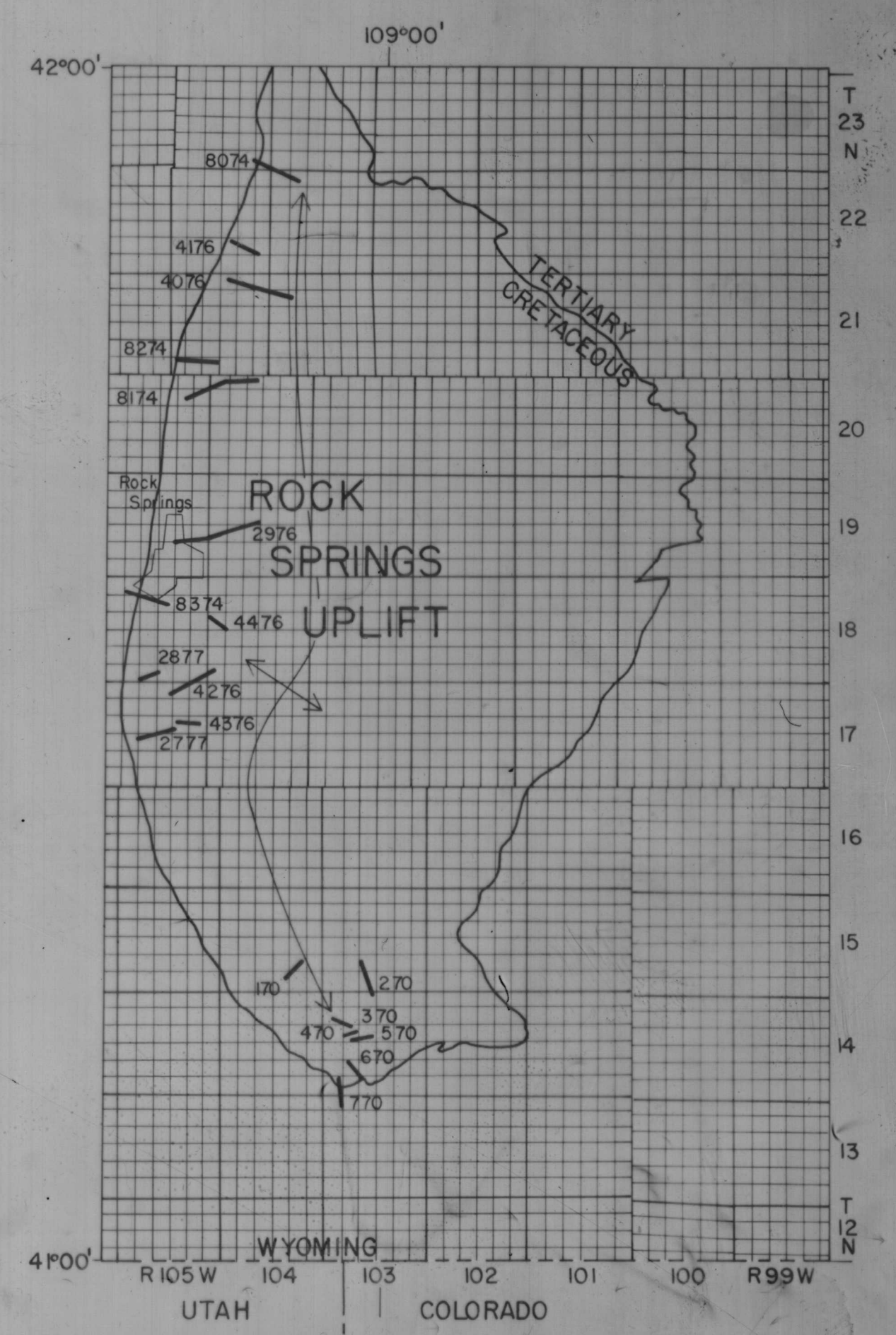
EXPANDED



References

- Smith, J. H., 1961, A summary of stratigraphy and paleontology, Upper Colorado and Montanan groups, south-central Wyoming, in Wyoming Geol. Assoc. Guidebook 16th Ann. Field Conf., Symposium on Late Cretaceous rocks, Wyoming and adjacent areas, Casper, Wyoming, p. 101-112.
- Wyoming Stratigraphic Nomenclature Chart; Revised by Stratigraphic Nomenclature Committee, Wyoming Geological Association, 1969, in Wyoming Geol. Assoc. Guidebook, 28th Ann. Field Conf., The Geology and Mineral Resources of the Greater Green River Basin, Casper, Wyoming, p. 9.
- Roehler, H. W., 1965, Pre-Laramide restored section, Late Cretaceous rocks, southwest Wyoming and northwest Colorado, in Wyoming Geol. Assoc. Guidebook 19th Ann. Field Conf., Sedimentation of Late Cretaceous and Tertiary outcrops, Casper, Wyoming, Fig. 1, p. 10.
- Hale, L. A., 1950, Stratigraphy of the Upper Cretaceous Montana Group in the Rock Springs uplift, Sweetwater County, in Wyoming Geol. Assoc. Guidebook 5th Ann. Field Conf., Southwest Wyoming, Casper, Wyoming, p. 49-58.

Index map showing the locations of measured sections



Bank of the Rock Springs uplift, Sweetwater County, Wyoming