

PLATE IV

EXPLANATION	
	Glacial till
	Post mineral andesite and monzonite dikes
	Quartz monzonite porphyry
	Limey argillite
	Limestone
	"Cherty" alteration
	Skarn
	Silicified rock
	Contact, dashed where concealed
	Strike and dip of bedding
	Strike of vertical bedding
	Fault, showing dip
	Vertical fault
	Breccia zone, showing dip
	Limit of conspicuous molybdenite (from Twenhofel, 1946, plate 2)
	Limit of inconspicuous molybdenite, excluding the quartz monzonite porphyry (from Twenhofel, 1946, plate 2)
	100ppm molybdenum contour
	Vertical diamond drill hole
	Inclined diamond drill hole, projected to horizontal plane, showing bearing and inclination

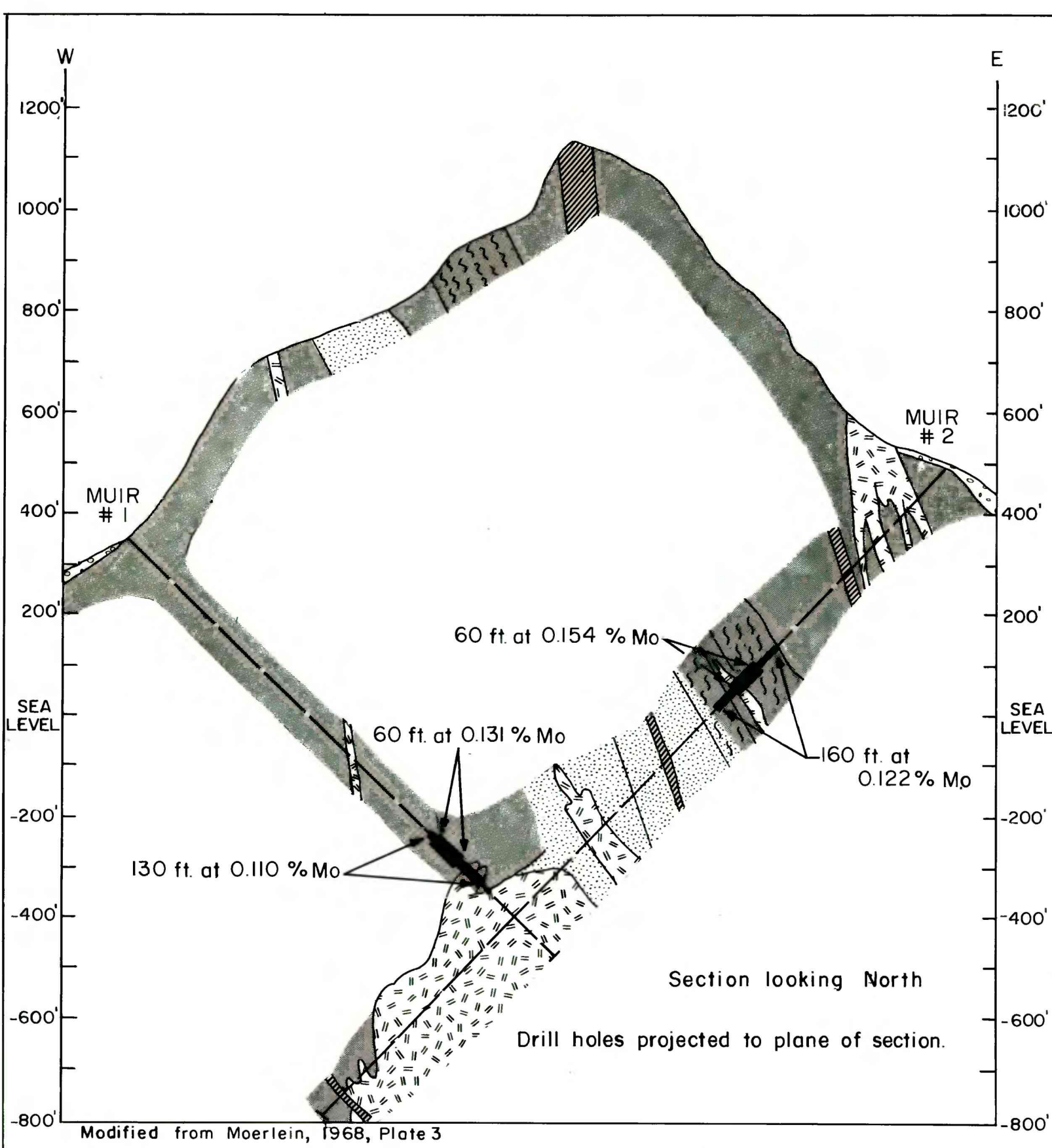
Assay results given in table C-50

References
Moerlein, G.A., 1968, Geology and drilling results, Nunatak molybdenum prospect, Walper property, southeastern Alaska. (unpub. rept. available at U. S. Bur. Mines Library, Juneau, Alaska)
Twenhofel, W.S., 1946, molybdenite deposits of the Nunatak area, Muir Inlet, Glacier Bay; U.S. Geological Survey Bull. 947-B, plate 2

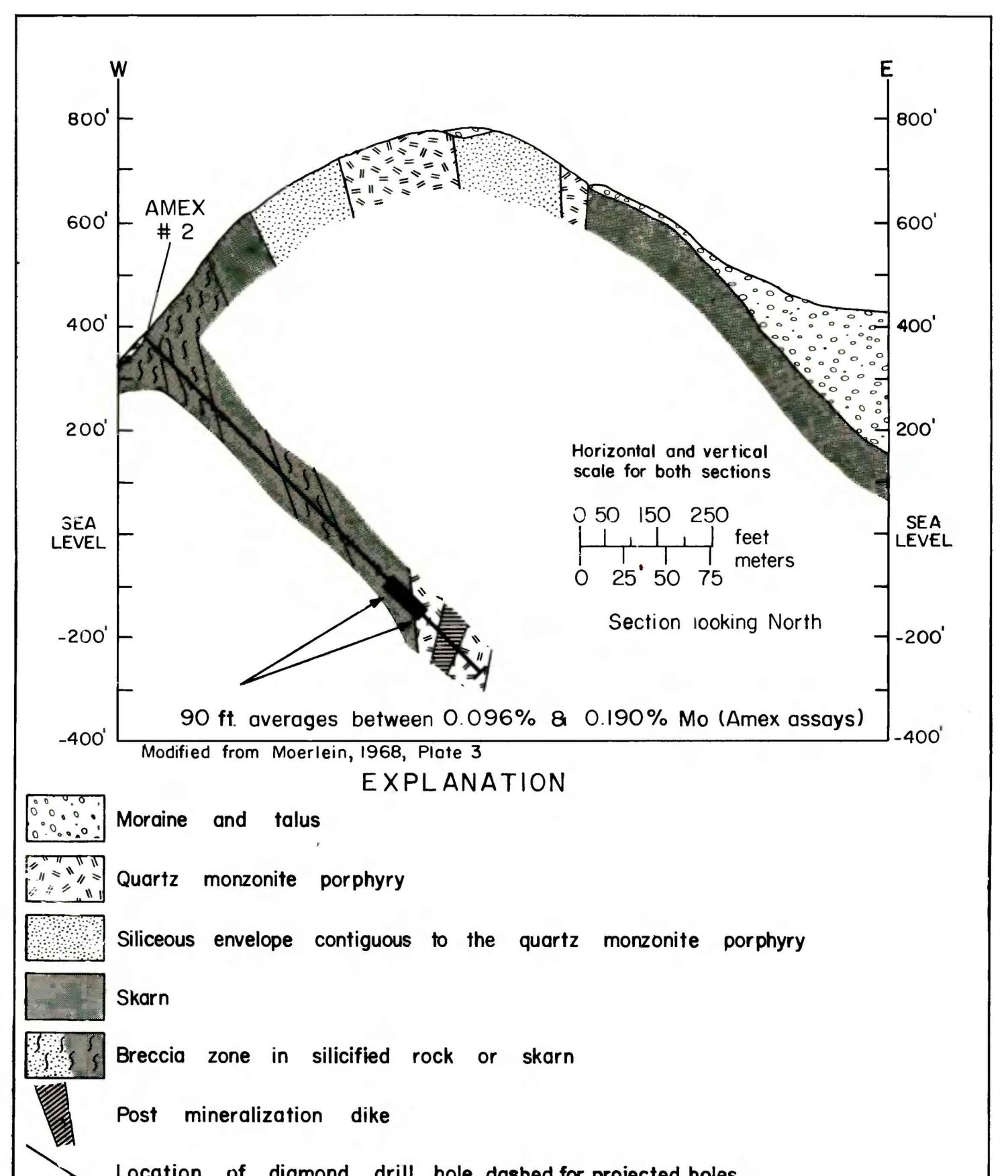
Modified from Moerlein, 1968, plate 2

Cartography by Scott W. Guthrie

This report is preliminary and has not been edited or reviewed for conformity with Geological Survey standards and nomenclature.



SECTION A



SECTION B