

This report is preliminary and has
not been edited or reviewed for
conformity with Geological Survey
standards and nomenclature.

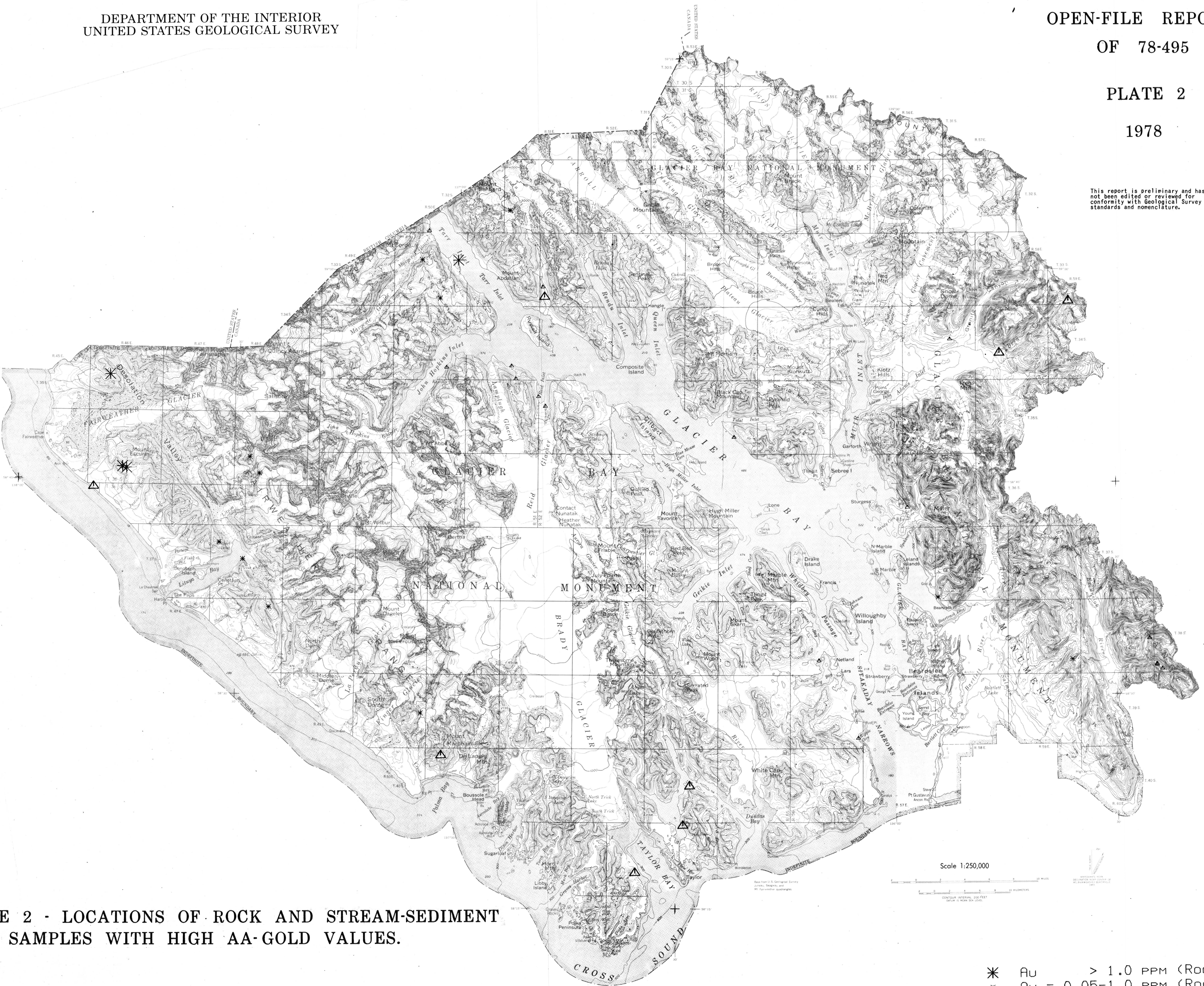


PLATE 2 - LOCATIONS OF ROCK AND STREAM-SEDIMENT
SAMPLES WITH HIGH AA-GOLD VALUES.

* Au > 1.0 ppm (ROCK)
* Au = 0.05-1.0 ppm (ROCK)
△ Au > 0.2 ppm (STREAM)
△ Au = 0.05-0.2 ppm (STREAM)