

This report is preliminary and has
not been edited or reviewed for
conformity with Geological Survey
standards and nomenclature.

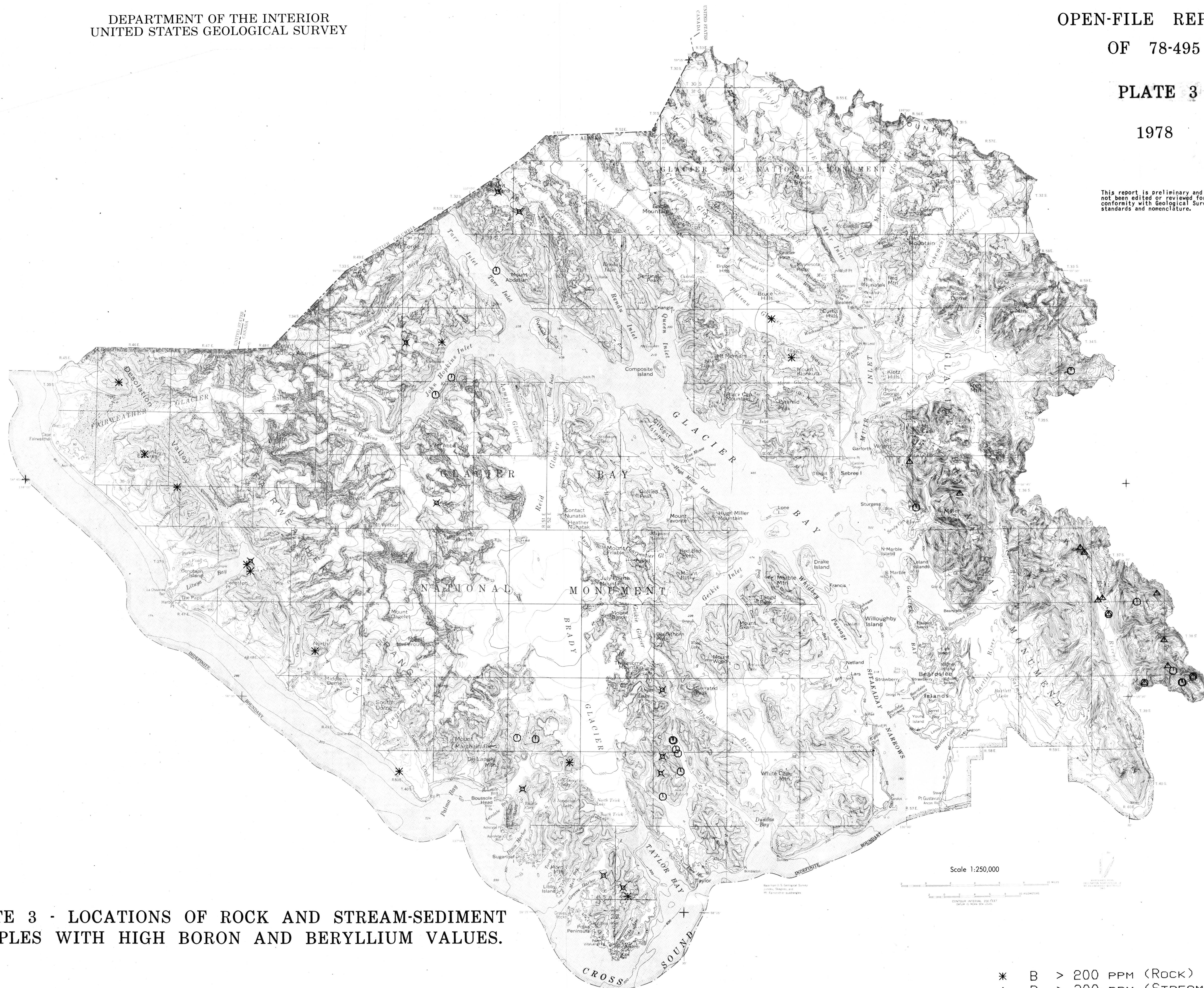


PLATE 3 - LOCATIONS OF ROCK AND STREAM-SEDIMENT
SAMPLES WITH HIGH BORON AND BERYLLIUM VALUES.

- * B > 200 PPM (ROCK)
- △ B > 300 PPM (STREAM)
- × BE > 3.0 PPM (ROCK)
- BE > 1.5 PPM (STREAM)