

This report is preliminary and has not been edited or reviewed for conformity with Geological Survey standards and nomenclature.

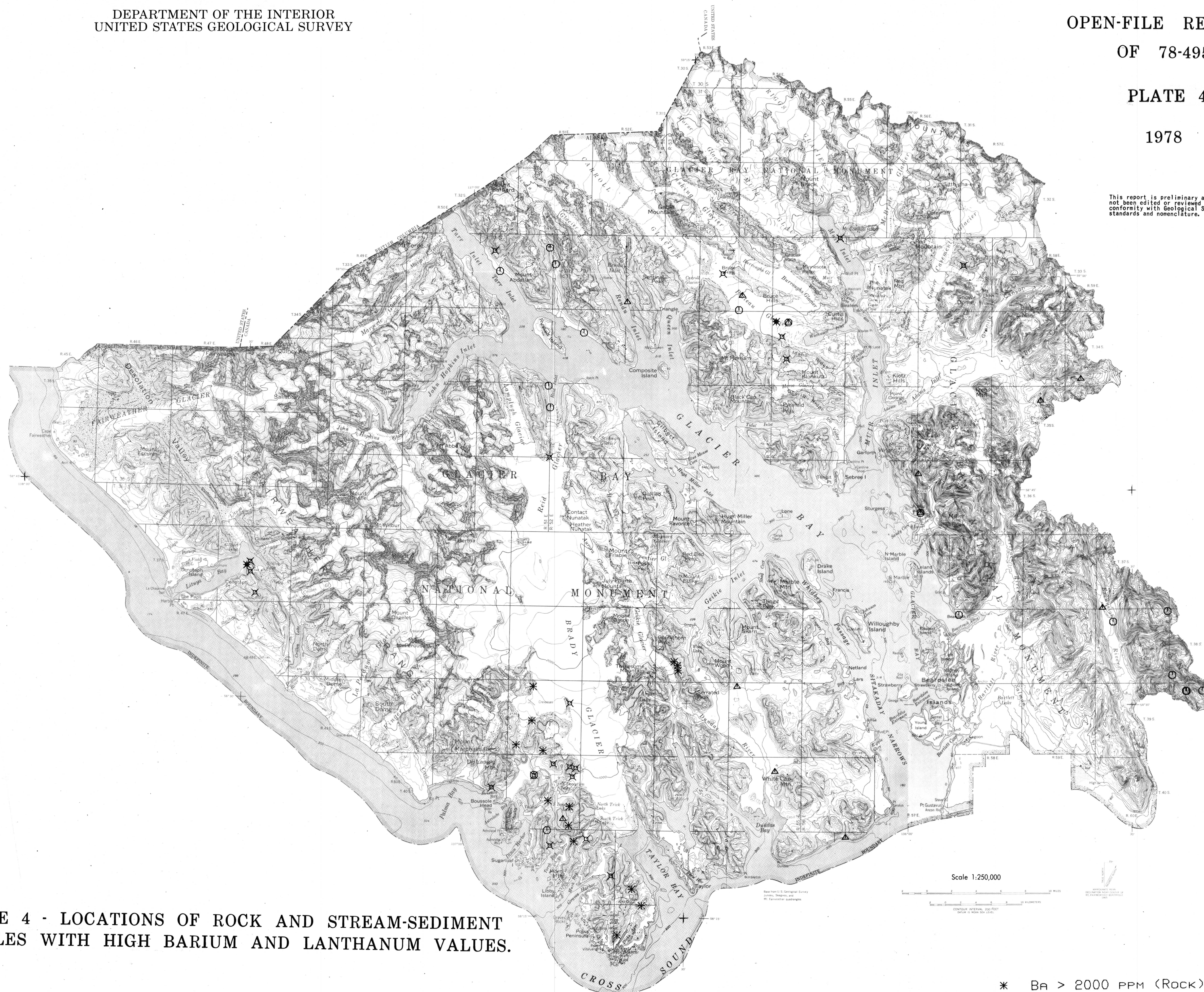


PLATE 4 - LOCATIONS OF ROCK AND STREAM-SEDIMENT  
SAMPLES WITH HIGH BARIUM AND LANTHANUM VALUES.

- \* BA > 2000 PPM (ROCK)
- ▲ BA > 1500 PPM (STREAM)
- ✕ LA > 100 PPM (ROCK)
- LA > 100 PPM (STREAM)