

This report is preliminary and has not been edited or reviewed for conformity with Geological Survey standards and nomenclature.

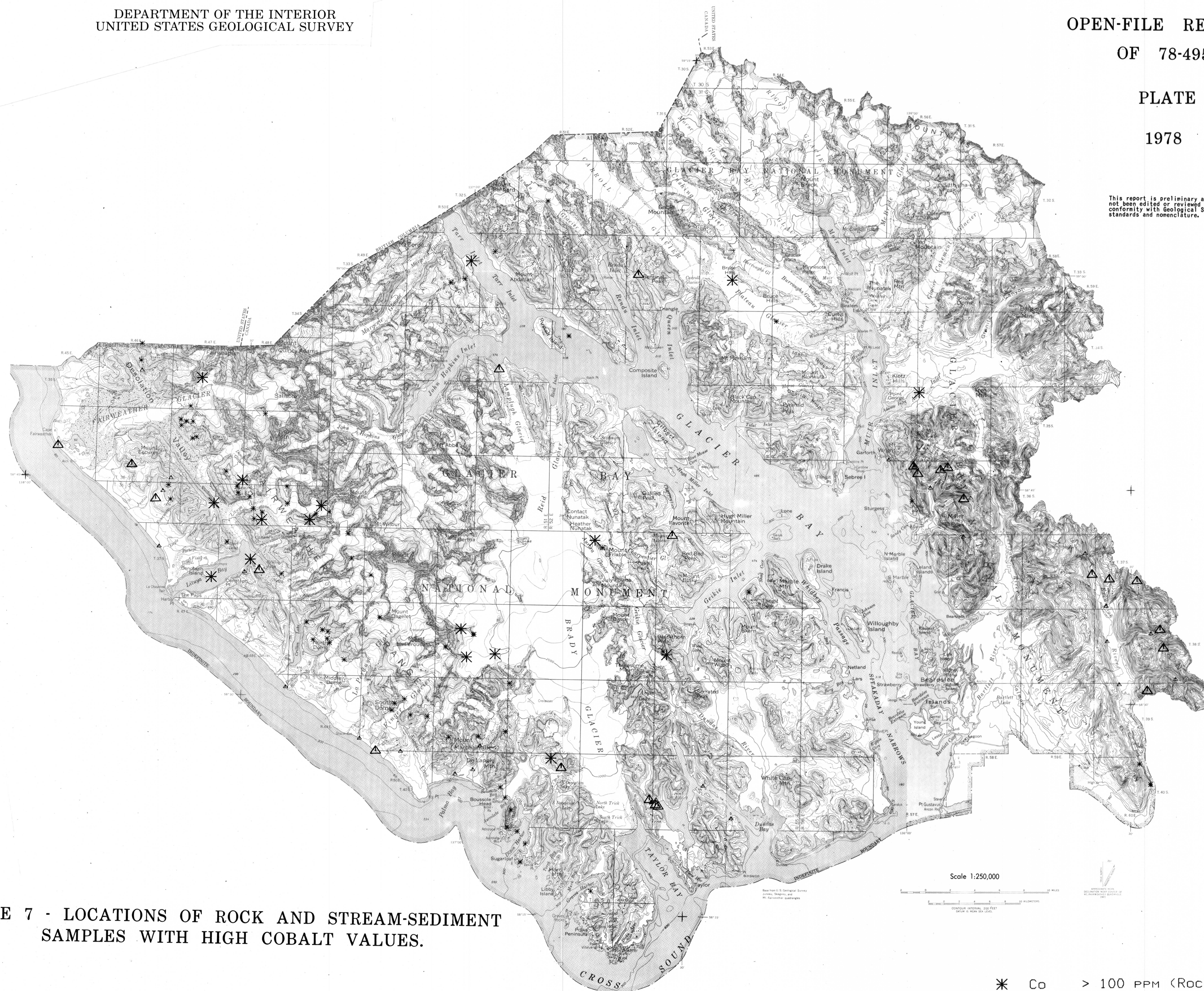


PLATE 7 - LOCATIONS OF ROCK AND STREAM-SEDIMENT
SAMPLES WITH HIGH COBALT VALUES.

- * Co > 100 PPM (ROCK)
- * Co = 70-100 PPM (ROCK)
- △ Co > 70 PPM (STREAM)
- △ Co = 60-70 PPM (STREAM)