

This report is preliminary and has
not been edited or reviewed for
conformity with Geological Survey
standards and nomenclature.

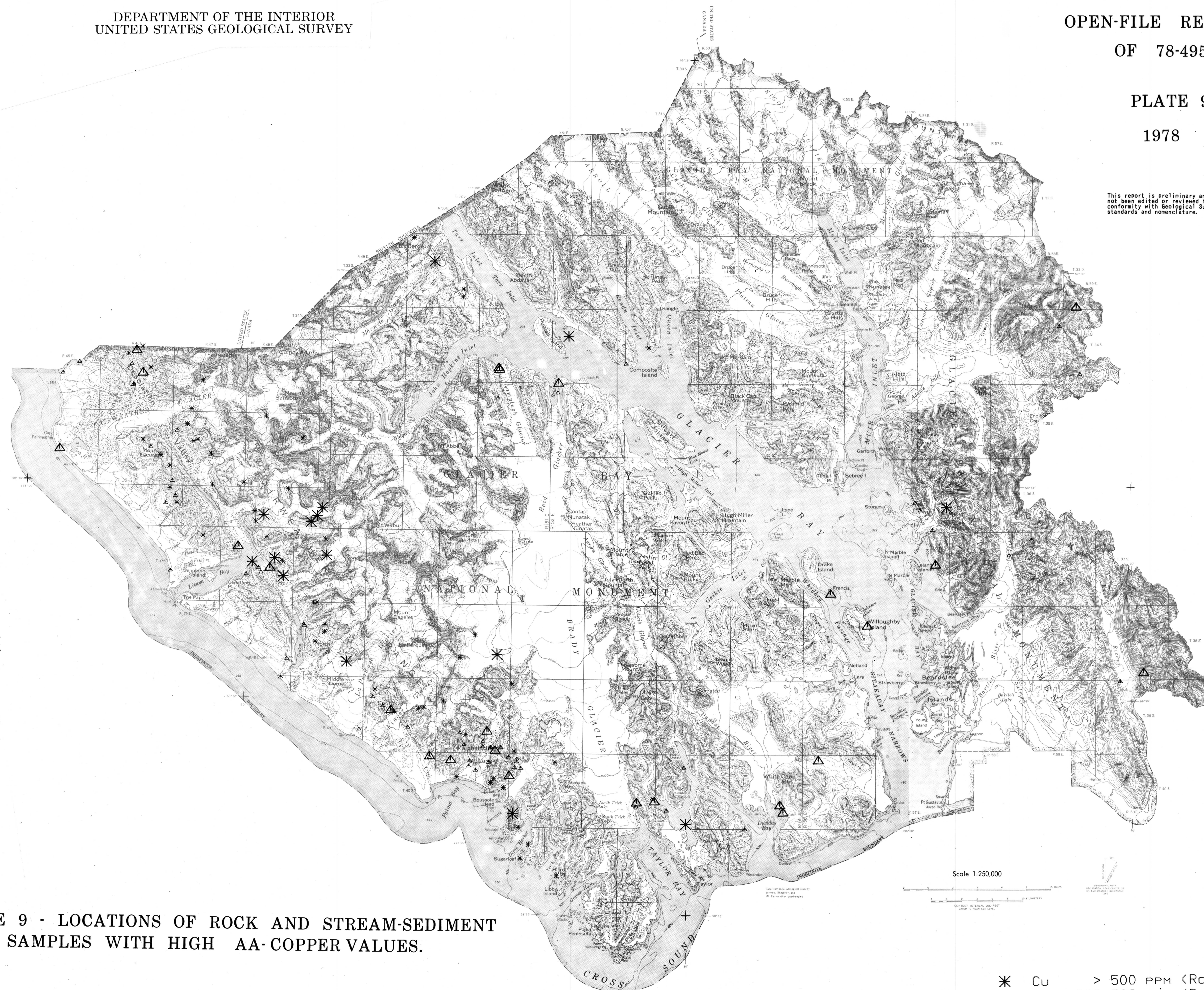


PLATE 9 - LOCATIONS OF ROCK AND STREAM-SEDIMENT
SAMPLES WITH HIGH AA-COPPER VALUES.

- * Cu > 500 PPM (ROCK)
- * Cu = 200-500 PPM (ROCK)
- △ Cu > 150 PPM (STREAM)
- △ Cu = 100-150 PPM (STREAM)