

This report is preliminary and has  
not been edited or reviewed for  
conformity with Geological Survey  
standards and nomenclature.

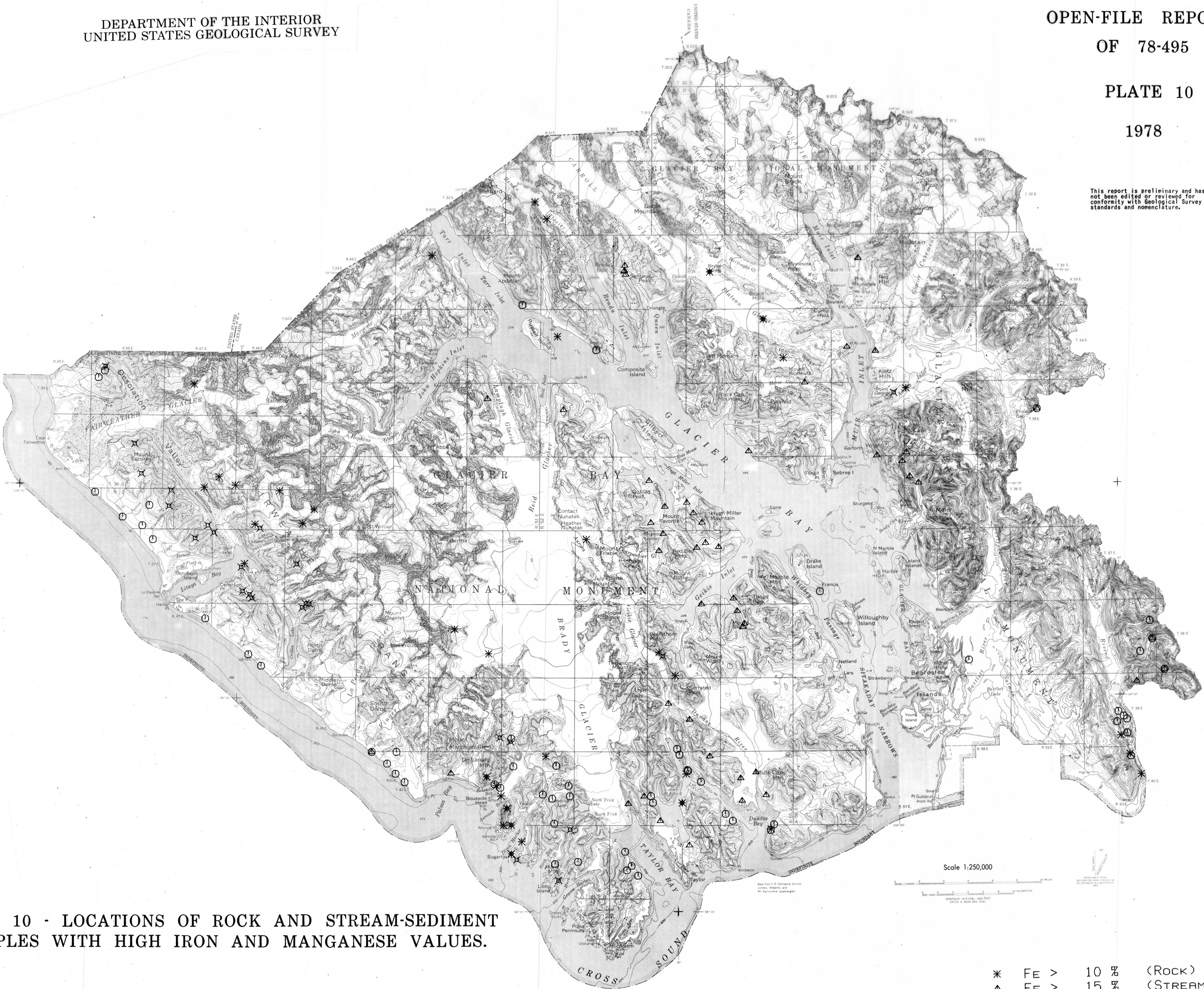


PLATE 10 - LOCATIONS OF ROCK AND STREAM-SEDIMENT  
SAMPLES WITH HIGH IRON AND MANGANESE VALUES.

- \* FE > 10 % (ROCK)
- △ FE > 15 % (STREAM)
- × MN > 3000 PPM (ROCK)
- MN > 3000 PPM (STREAM)