

This report is preliminary and has  
not been edited or reviewed for  
conformity with Geological Survey  
standards and nomenclature.

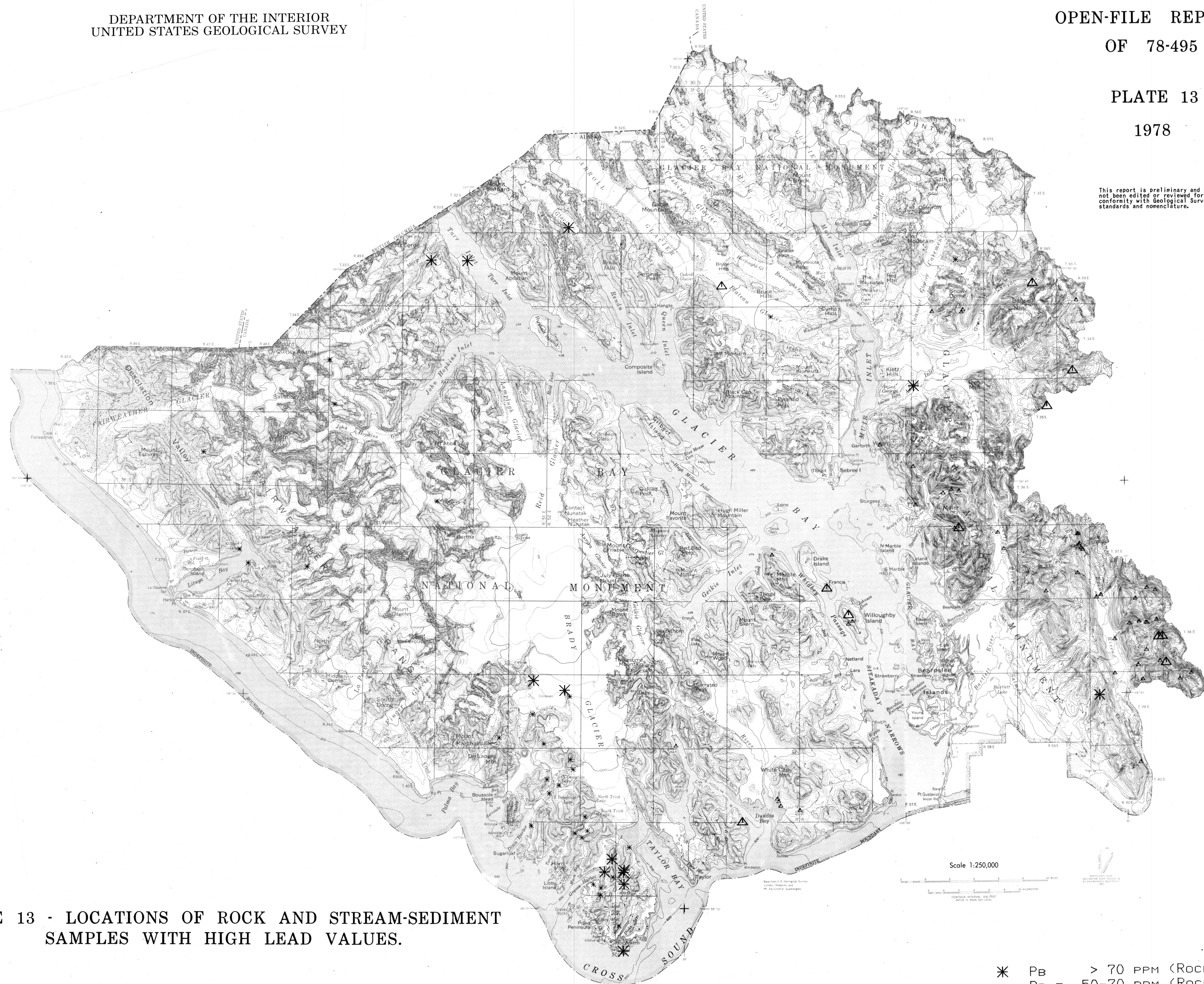


PLATE 13 - LOCATIONS OF ROCK AND STREAM-SEDIMENT  
SAMPLES WITH HIGH LEAD VALUES.

- \* PB > 70 PPM (ROCK)
- \* PB = 50-70 PPM (ROCK)
- △ PB > 100 PPM (STREAM)
- △ PB = 50-100 PPM (STREAM)