

This report is preliminary and has  
not been edited or reviewed for  
conformity with Geological Survey  
standards and nomenclature.

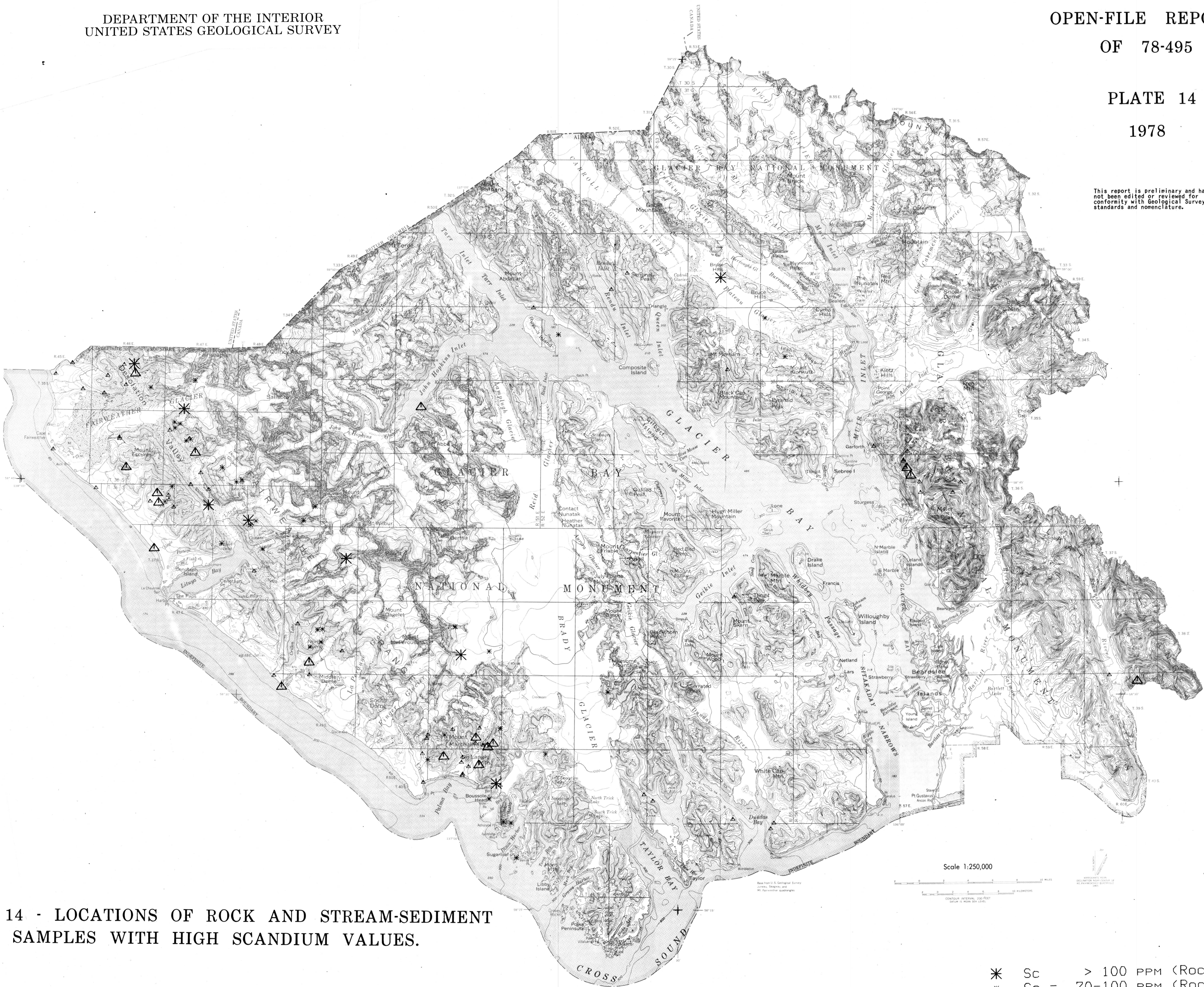


PLATE 14 - LOCATIONS OF ROCK AND STREAM-SEDIMENT  
SAMPLES WITH HIGH SCANDIUM VALUES.

- \* Sc > 100 PPM (ROCK)
- \* Sc = 70-100 PPM (ROCK)
- △ Sc > 60 PPM (STREAM)
- △ Sc = 50-60 PPM (STREAM)