

This report is preliminary and has
not been edited or reviewed for
conformity with Geological Survey
standards and nomenclature.

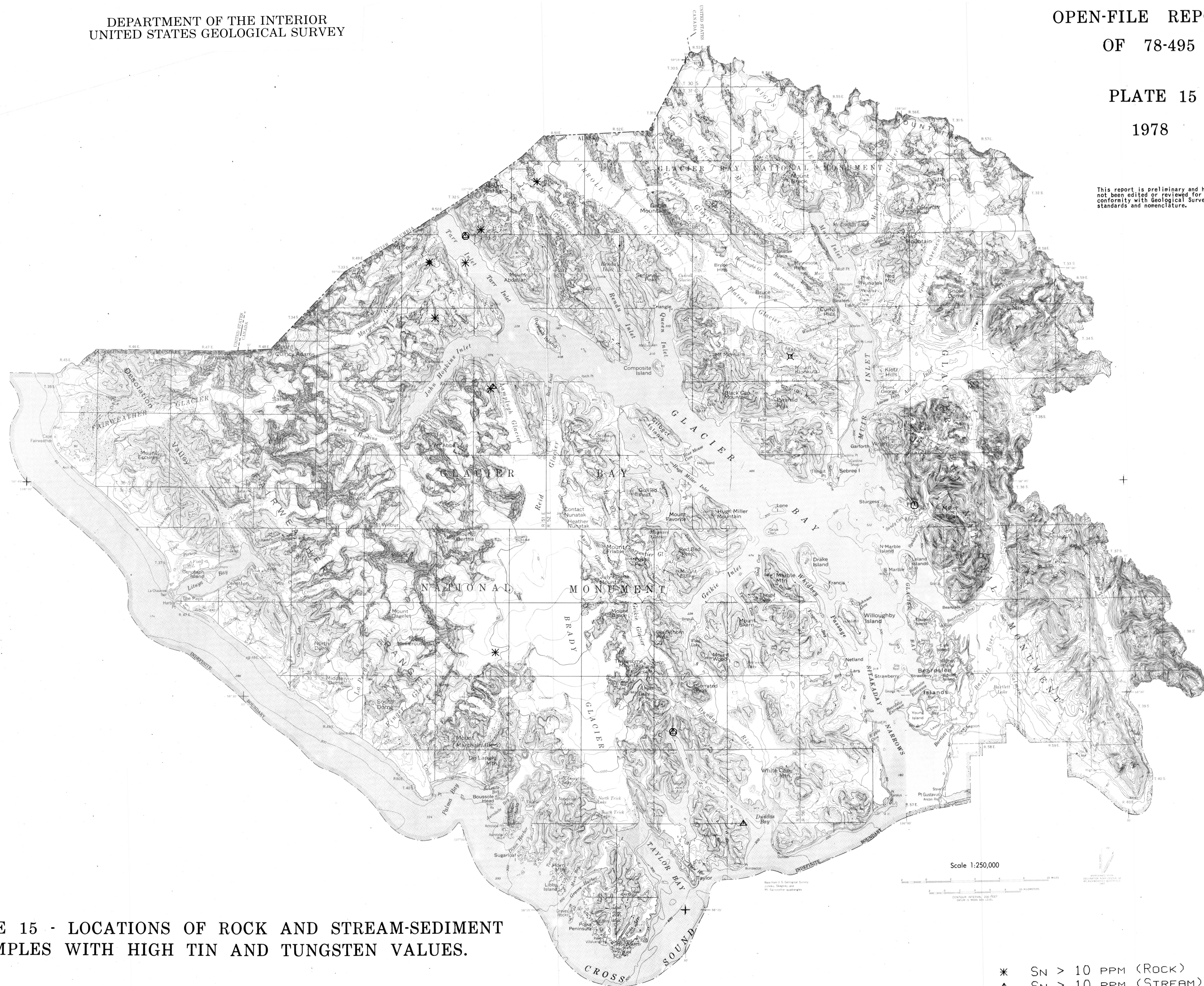


PLATE 15 - LOCATIONS OF ROCK AND STREAM-SEDIMENT
SAMPLES WITH HIGH TIN AND TUNGSTEN VALUES.

- * SN > 10 PPM (ROCK)
- △ SN > 10 PPM (STREAM)
- × W > 50 PPM (ROCK)
- W > 50 PPM (STREAM)