

This report is preliminary and has not been edited or reviewed for conformity with Geological Survey standards and nomenclature.

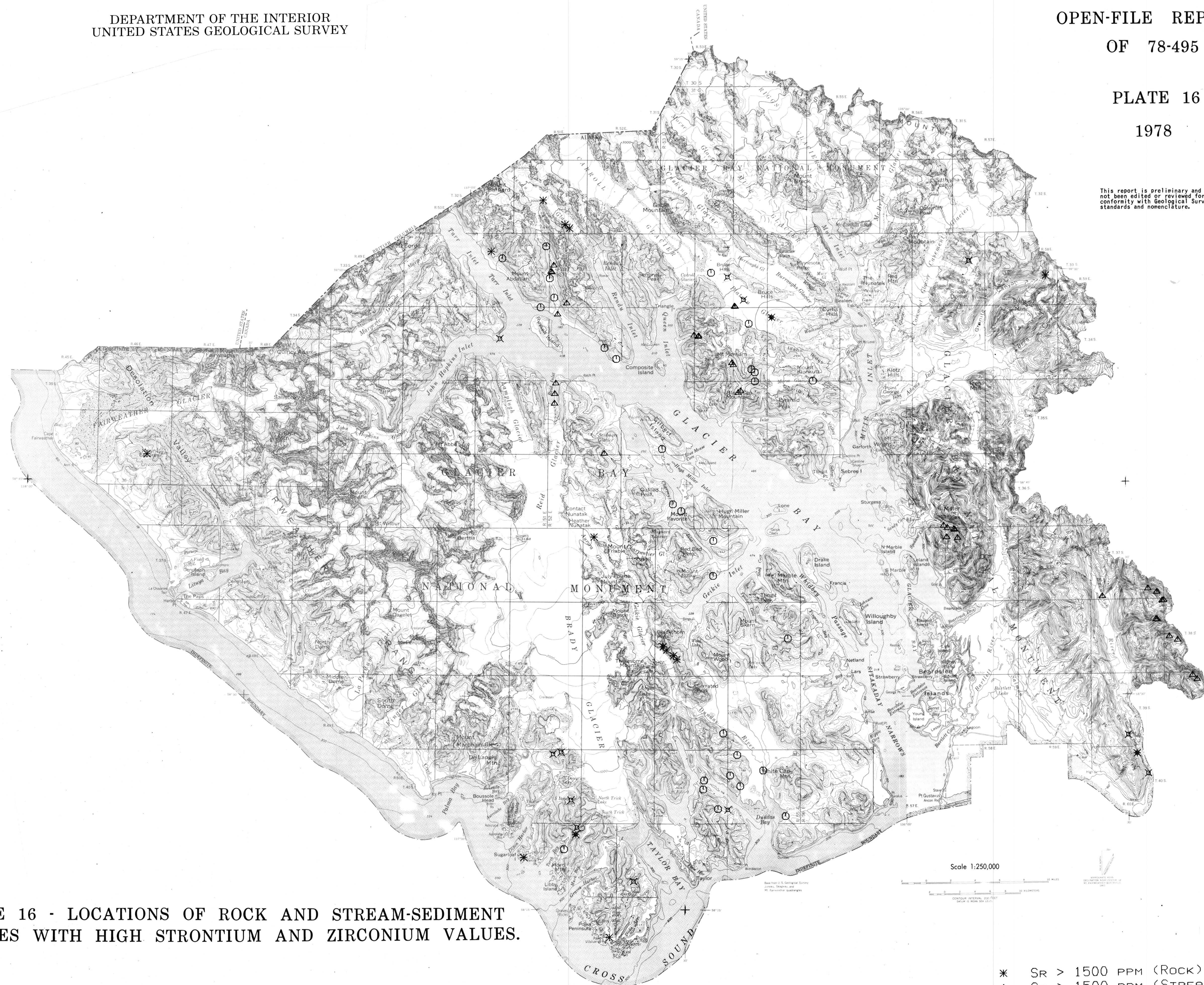


PLATE 16 - LOCATIONS OF ROCK AND STREAM-SEDIMENT
SAMPLES WITH HIGH STRONTIUM AND ZIRCONIUM VALUES.

- * SR > 1500 PPM (ROCK)
- Δ SR > 1500 PPM (STREAM)
- x ZR > 300 PPM (ROCK)
- O ZR > 700 PPM (STREAM)