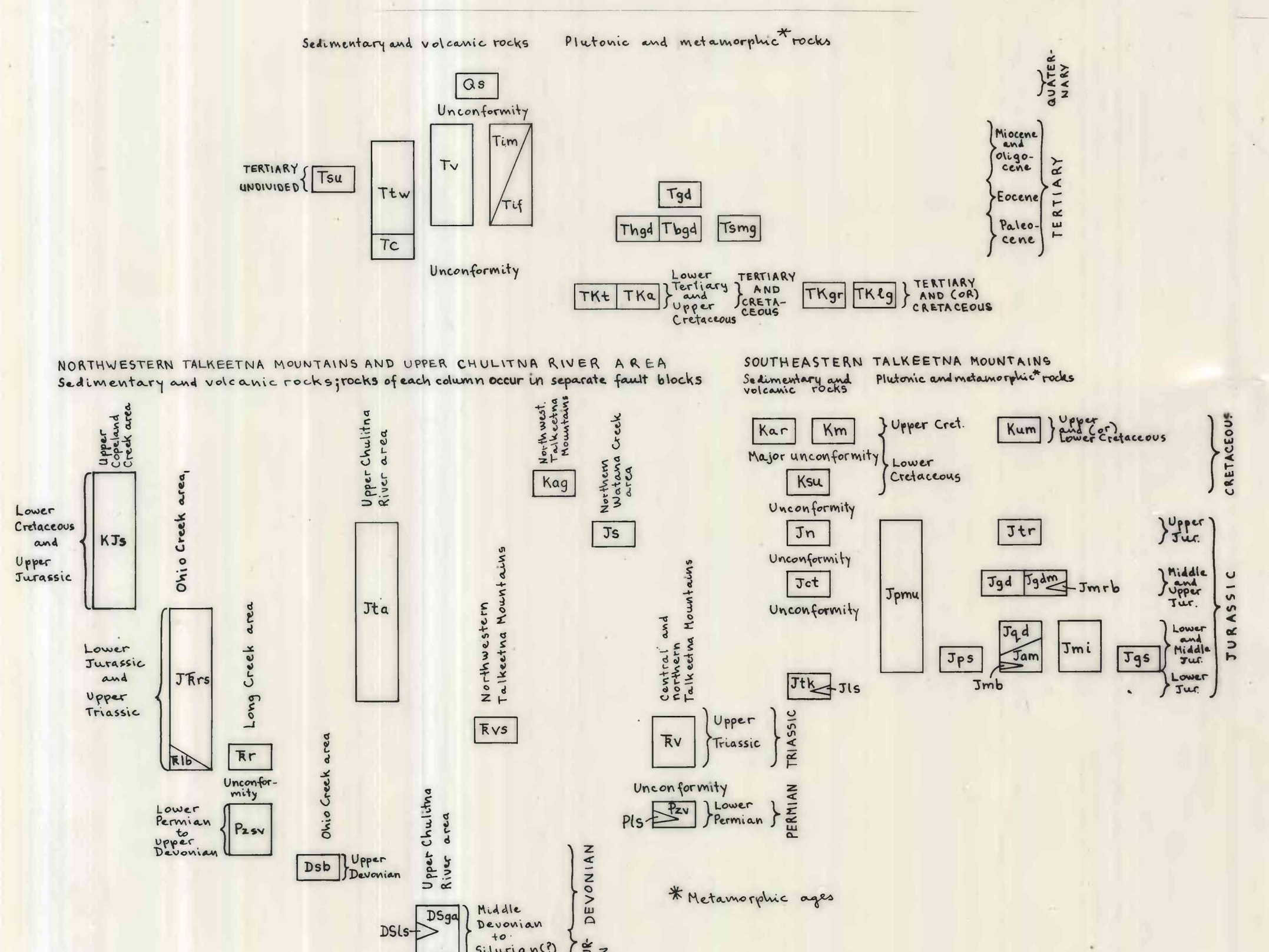




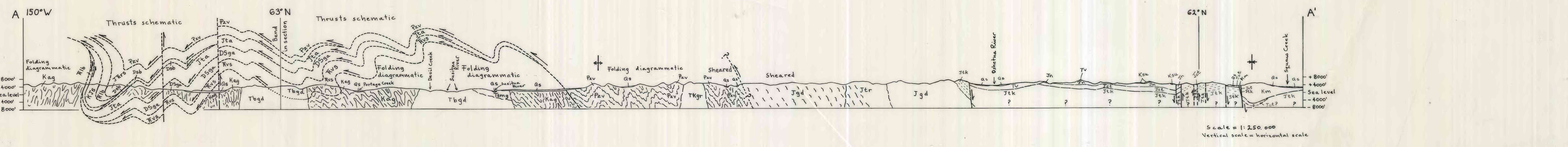
CORRELATION OF MAP UNITS



EXPLANATION OF MAP SYMBOLS

- Contact, approximately located
- Approximate contact of surficial deposits
- Fault
 - Long dashed where approximately located; short dashed where inferred; dotted where concealed. U indicates upthrown side where direction of displacement is known. Arrows indicate relative lateral movement.
 - Thrust fault
 - Long dashed where approximately located, short dashed where inferred, dotted where concealed. Teeth indicate upthrown side.
 - Approximate axis of intense shear zone of variable width, possibly marking a thrust fault
 - Dotted where concealed; teeth indicate possible upthrown side of postulated thrust.
 - Anticline, showing crest line
 - Long dashed where approximately located; arrow indicates plunge.
 - Syncline, showing trough line
 - Long dashed where approximately located; arrow indicates plunge.
 - Location of sample dated by the U.S. Geological Survey using the potassium-argon or the lead-alpha method, showing map number, field number, and the calculated mineral age. Map number refers to sample number in table 1 or table 2. Bi - biotite, Hb - hornblende, Mu - muscovite, Act - actinolite, Zr - zircon, wr - whole rock.
 - Location of sample dated by Turner and Smith (1974) using the potassium-argon method, showing map number, field number, and the calculated mineral age. Map number refers to sample number in table 1. Bi - biotite, Hb - hornblende.
 - X4.
 - Fossil locality in units Tka, Pls, and Dsls. Map number refers to sample number in table 3.
 - Strike and dip of beds
 - Inclined
 - Overturned
 - Vertical
 - Approximate, estimated from distant observations
 - Strike and dip of fracture cleavage
 - Inclined
 - Vertical
 - Strike and dip of slaty or axial plane cleavage
 - Inclined
 - Vertical
 - Strike and dip of shear planes, metamorphic foliation or schistosity
 - Inclined
 - Vertical
 - Strike and dip of igneous flow foliation
 - Inclined
 - Vertical
 - Bearing and plunge of lineation
 - Inclined
 - Horizontal
 - Strike and dip of joints
 - Inclined
 - Vertical

Base by U.S. Geological Survey, 1954, 1956, 1962



RECONNAISSANCE GEOLOGIC MAP AND GEOCHRONOLOGY, TALKEETNA MOUNTAINS QUADRANGLE,
NORTHERN PART OF ANCHORAGE QUADRANGLE, AND SOUTHWEST CORNER OF HEALY QUADRANGLE, ALASKA

By
Béla Csejtey, Jr., W.H. Nelson, D.L. Jones, N.J. Silberling,
R.M. Dean, M.S. Morris, M.A. Lanphere, J.G. Smith,
and M.L. Silberman

This report is preliminary and has
not been edited or reviewed for
conformity with Geological Survey
standards and nomenclature.