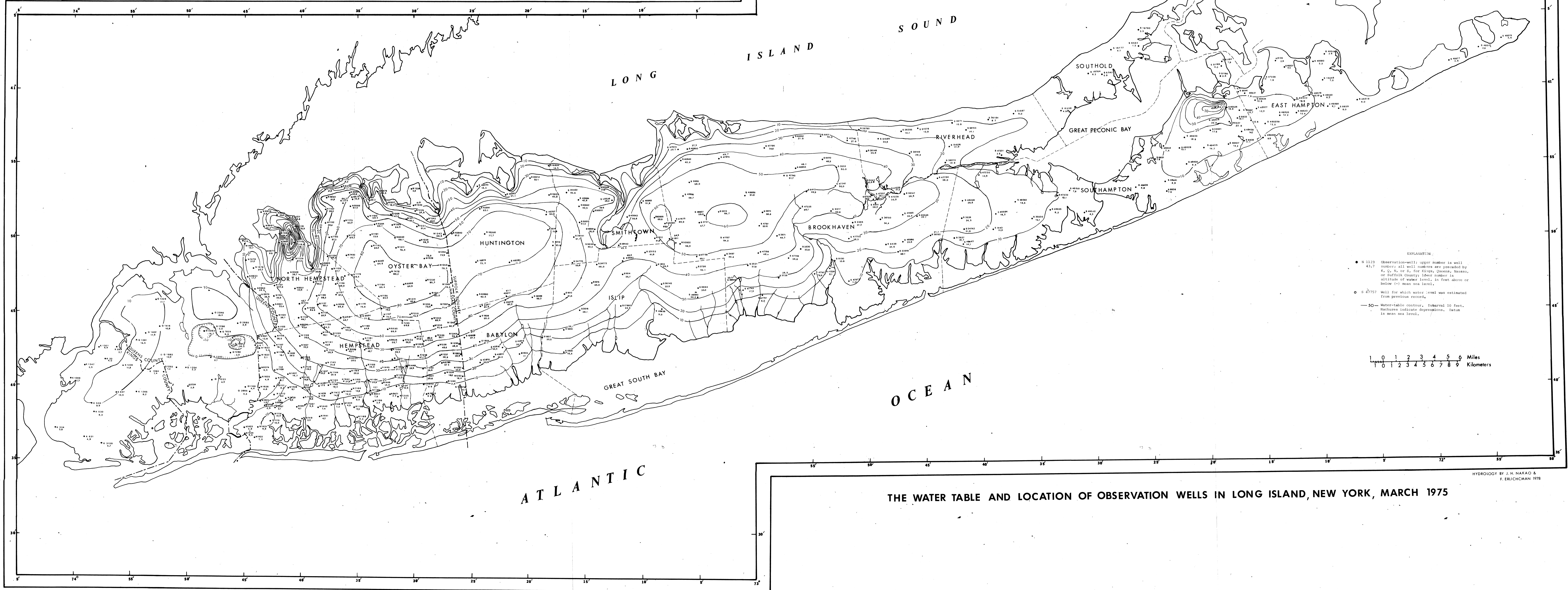


PREPARED IN COOPERATION WITH THE
NEW YORK STATE DEPARTMENT OF ENVIRONMENTAL CONSERVATION
NASSAU COUNTY DEPARTMENT OF PUBLIC WORKS
SUFFOLK COUNTY DEPARTMENT OF ENVIRONMENTAL CONTROL
SUFFOLK COUNTY WATER AUTHORITY

UNITED STATES DEPARTMENT OF THE INTERIOR
GEOLOGICAL SURVEY



EXPLANATION

- N 1123 Observation well; upper number is well number; all well numbers are preceded by N, S, W, or E, for Nassau, Oyster Bay, Suffolk, or Suffolk County; lower number is altitude of water level, in feet above or below (-) mean sea level.
- S 4757 Well for which water level was estimated from previous records.
- 50— Water-table contour. Interval 10 feet. Dashed lines indicate depressions. Datum is mean sea level.

1 0 1 2 3 4 5 6 Miles
1 0 1 2 3 4 5 6 7 8 9 Kilometers

HYDROLOGY BY J. H. NAKAO & F. ERUCHMAN 1978

THE WATER TABLE AND LOCATION OF OBSERVATION WELLS IN LONG ISLAND, NEW YORK, MARCH 1975