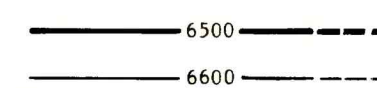


EXPLANATION



STRUCTURE CONTOURS - Drawn on top of coal bed. Solid where vertical accuracy within 40 feet; long dashed where vertical accuracy possibly not within 40 feet; short dashed where projected above ground surface. Contour interval is 100 feet (30.5 m). Datum is mean sea level.

○ 6815

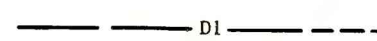
DRILL HOLE - Showing altitude of top of coal bed, in feet.

▲ 7390

POINT OF MEASUREMENT - Showing altitude of top of coal bed, in feet.

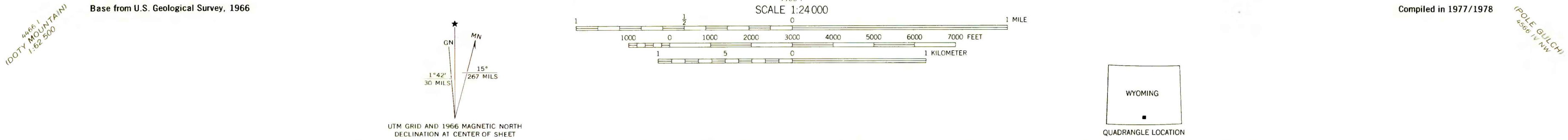
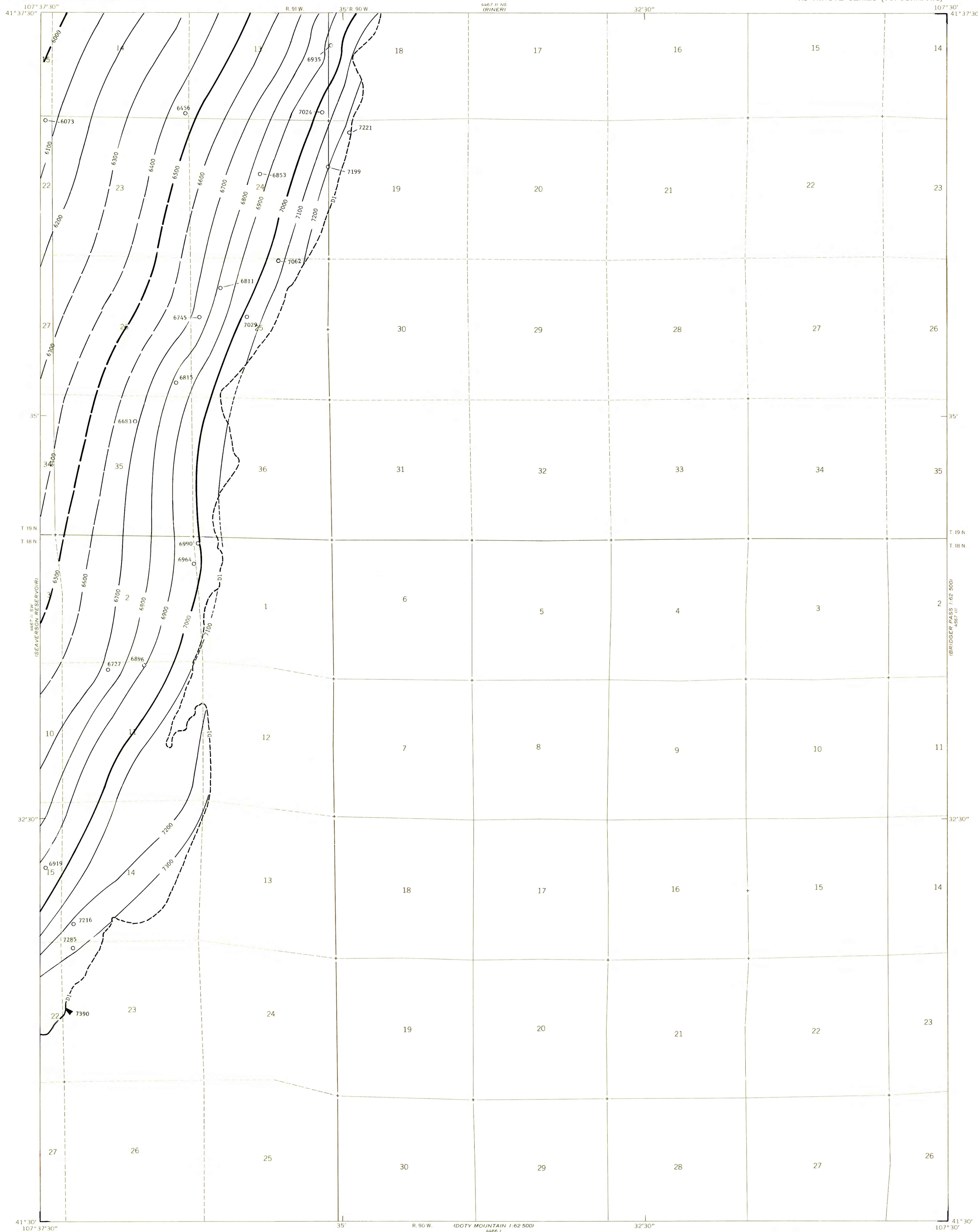
D1 - D1 (Separation Creek) of Lower Fort Union Coal Zone

COAL BED SYMBOL AND NAME



TRACE OF COAL BED OUTCROP - Showing symbol of name of coal bed as listed above. Dashed where inferred; short dashed where inferred by present authors.

To convert feet to meters, multiply feet by 0.3048.



COAL RESOURCE OCCURRENCE MAP OF THE FILLMORE RANCH
QUADRANGLE, CARBON COUNTY, WYOMING

BY
DAMES & MOORE
1978

PLATE 9
STRUCTURE CONTOUR MAP OF THE
D1 (SEPARATION CREEK) COAL BED

This report has not been edited for conformity with U.S. Geological Survey editorial standards or stratigraphic nomenclature.