

EXPLANATION

— 1000 —  
OVERBURDEN ISOPACHS - Showing thickness of overburden, in feet, from the surface to the top of the coal bed. Dashed where vertical accuracy possibly not within 40 feet. Isopach interval is 100 feet (30.5 m) over stripplable coal and 200 feet (61 m) beyond the stripping-limit line for the Y bed; 50 feet (15.2 m) over stripplable coal and 200 feet (61 m) beyond the stripping-limit line for the DI (Separation Creek) bed.

○ 132  
DRILL HOLE - Showing thickness of overburden, in feet, from the surface to the top of the coal bed.

— 10 —  
MINING-RATIO CONTOUR - Number indicates cubic yards of overburden per ton of recoverable coal by surface mining methods. Contours shown only in areas underlain by coal of Reserve Base thickness within the stripping-limit (in this quadrangle, the 200-foot-overburden isopach).

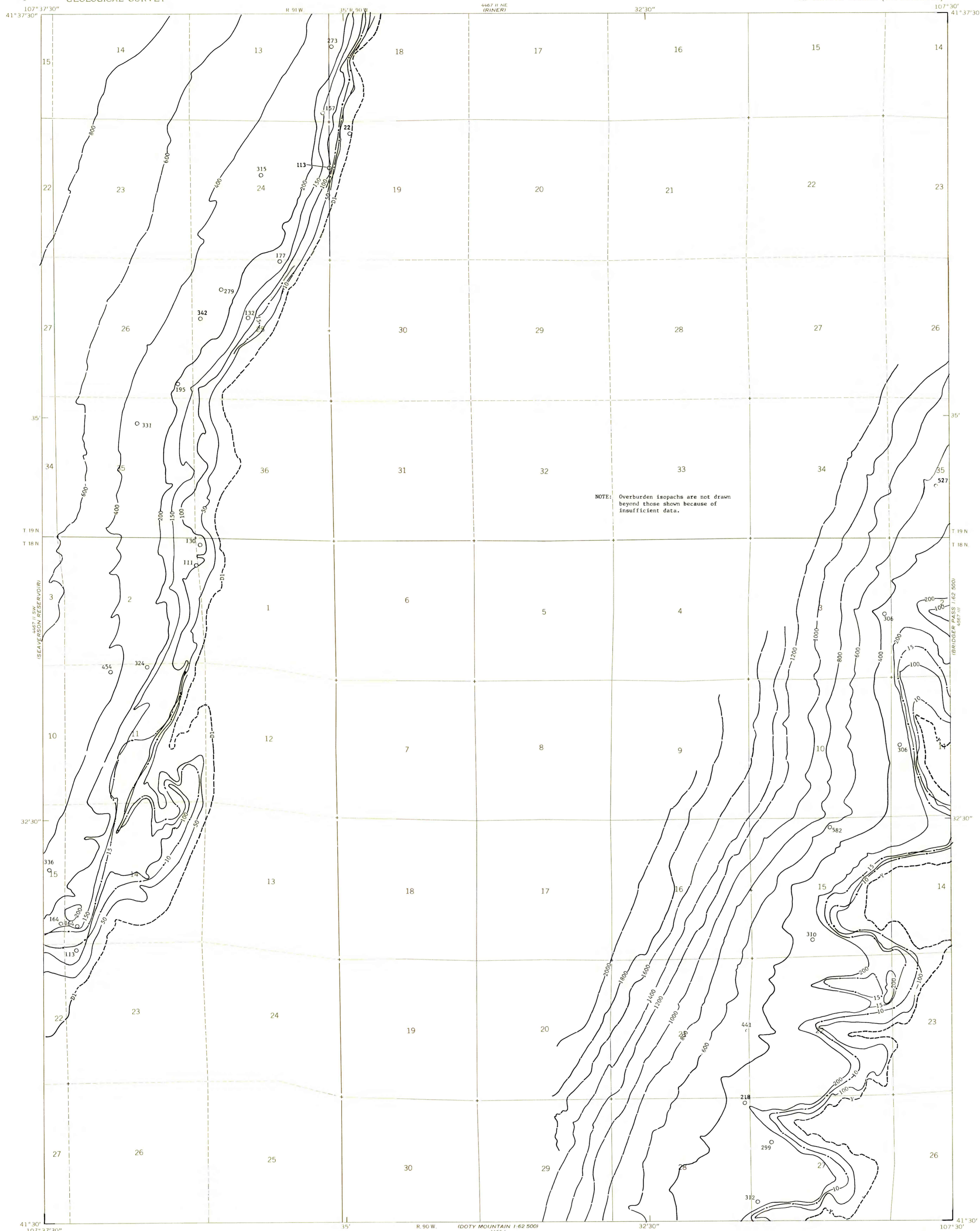
D1 - D1 (Separation Creek) of Lower Fort Union Coal Zone  
Y - Y bed of the Almond

COAL BED SYMBOLS AND NAMES

----- Y -----  
TRACE OF COAL BED OUTCROP - Showing symbol of name of coal bed as listed above. Short dashed where inferred by present authors.

To convert feet to meters, multiply feet by 0.3048.

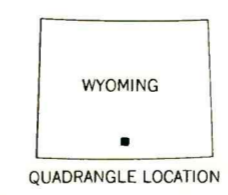
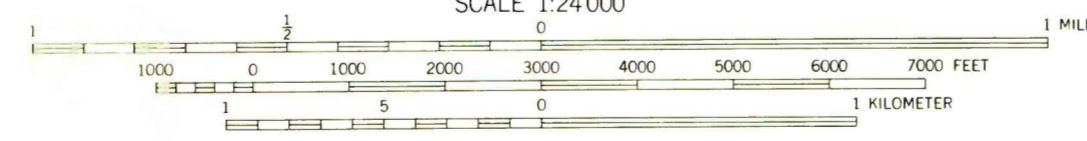
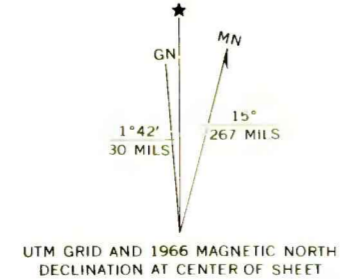
To convert mining ratio to cubic meters of overburden per metric ton of recoverable coal, multiply mining ratio by 0.8428.



NOTE: Overburden isopachs are not drawn beyond those shown because of insufficient data.

Base from U.S. Geological Survey, 1966

Compiled in 1977/1978



**COAL RESOURCE OCCURRENCE MAP OF THE FILLMORE RANCH  
QUADRANGLE, CARBON COUNTY, WYOMING**  
BY  
**DAMES & MOORE**  
1978

This report has not been edited for conformity with U.S. Geological Survey editorial standards or stratigraphic nomenclature.

PLATE 10  
OVERBURDEN ISOPACH AND  
MINING RATIO MAP OF THE  
Y COAL BED AND THE  
DI (SEPARATION CREEK) COAL BED