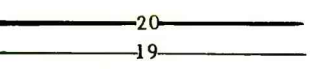
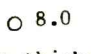
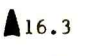
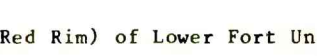
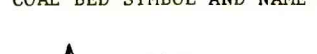
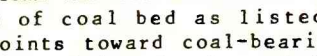
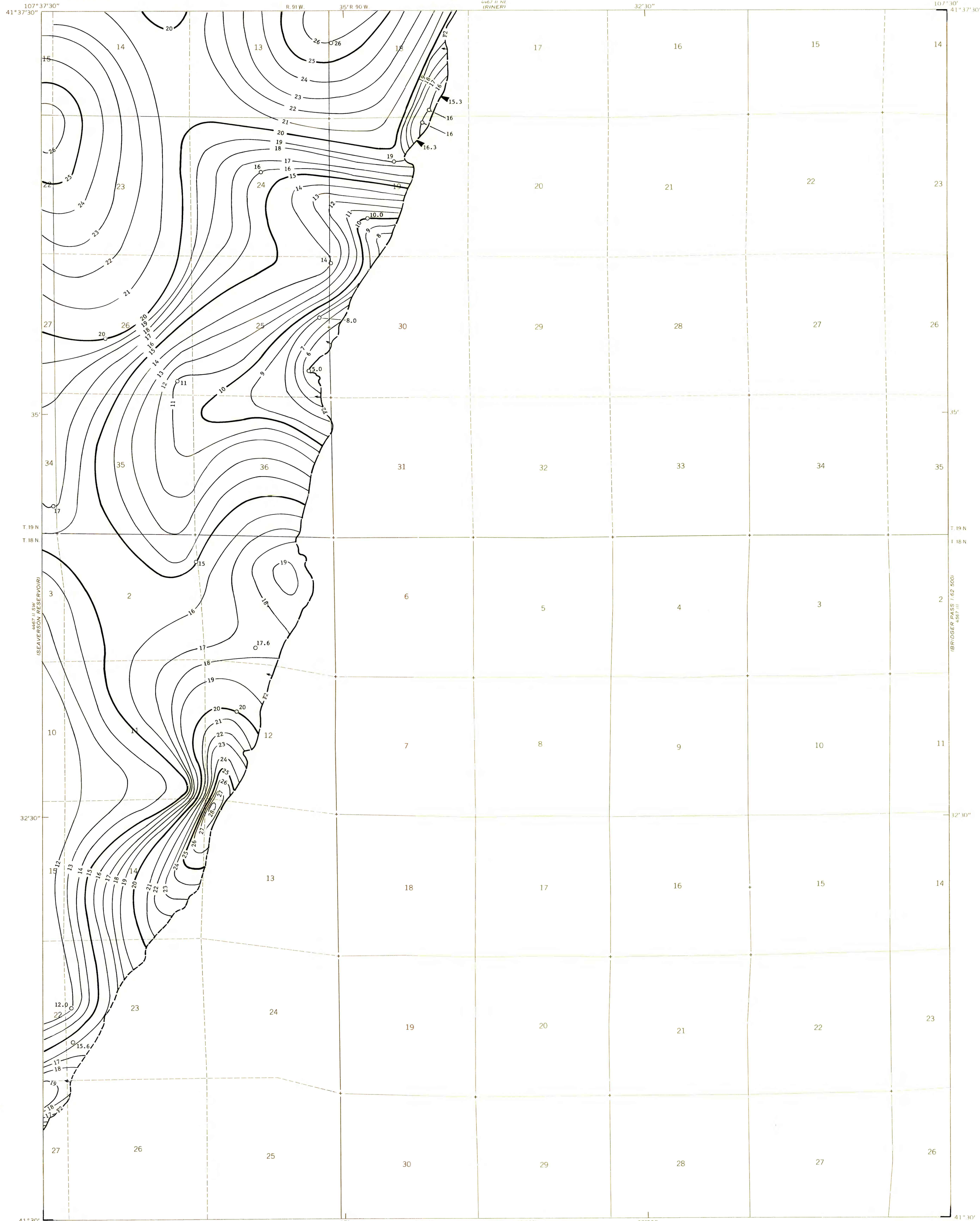
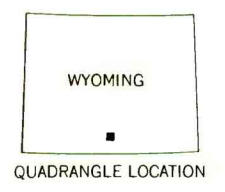
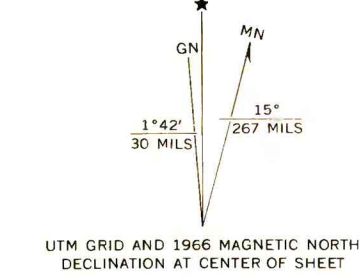
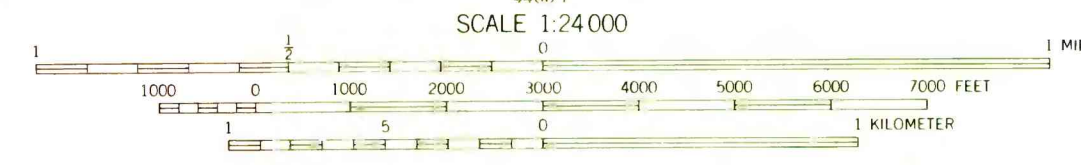


EXPLANATION

-  ISOPACHS - Showing thickness of coal, in feet. Isopach interval 1 foot.
 -  DRILL HOLE - Showing thickness of coal, in feet.
 -  POINT OF MEASUREMENT - Showing thickness of coal, in feet. Includes all points of measurement other than drill holes.
 -  F2 - F2 (Red Rim) of Lower Fort Union Coal Zone
 -  COAL BED SYMBOL AND NAME
 -  TRACE OF COAL BED OUTCROP - Showing symbol of name of coal bed as listed above. Arrow points toward coal-bearing area. Dashed where inferred; short dashed where inferred by present authors.
- To convert feet to meters, multiply feet by 0.3048.



Base from U.S. Geological Survey, 1966



**COAL RESOURCE OCCURRENCE MAP OF THE FILLMORE RANCH
QUADRANGLE, CARBON COUNTY, WYOMING**
BY
DAMES & MOORE
1978

This report has not been edited for conformity with U.S. Geological Survey editorial standards or stratigraphic nomenclature.