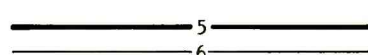


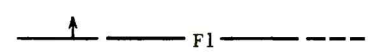
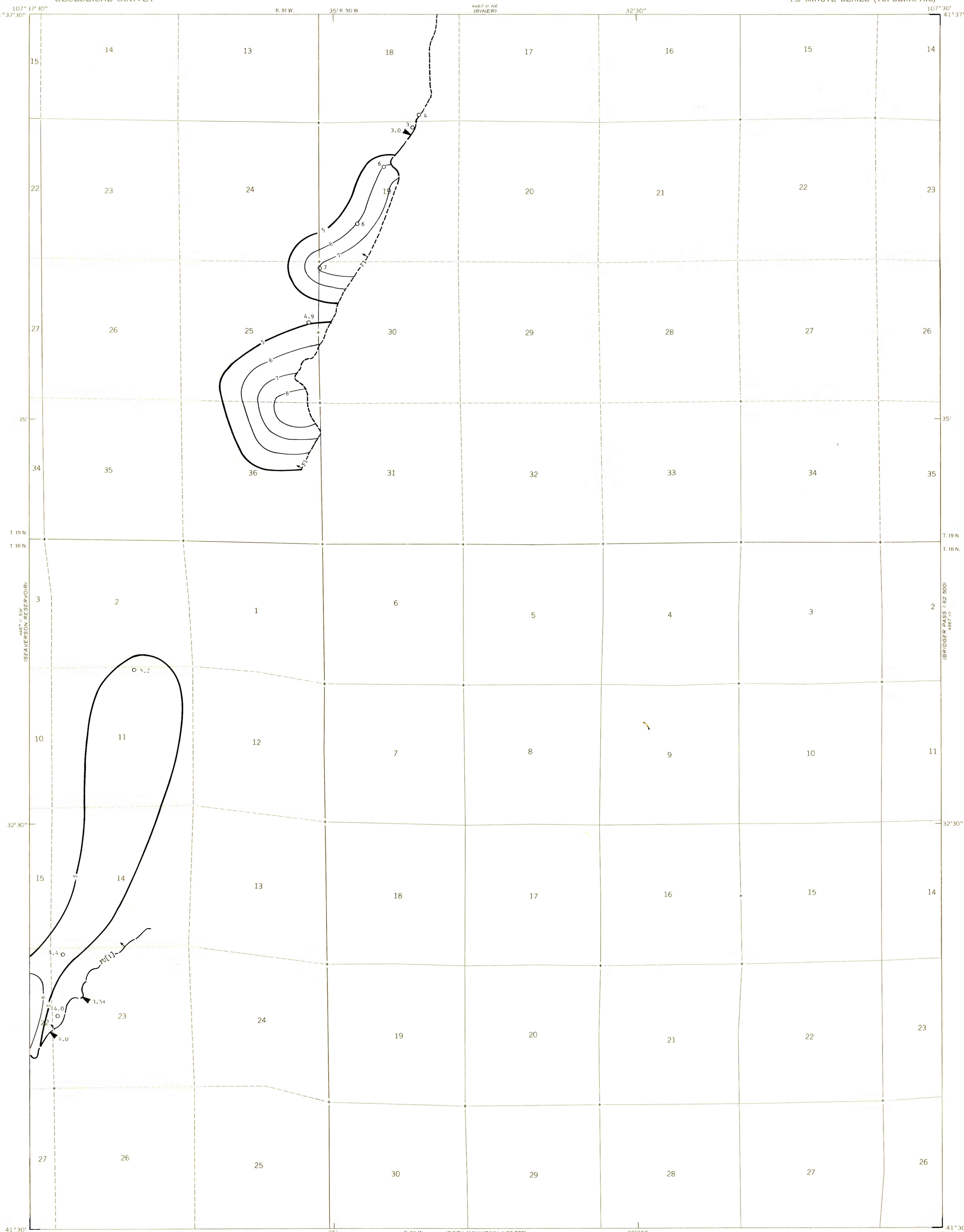


EXPLANATION

-  ISOPACHS - Showing thickness of coal, in feet. Isopach interval 1 foot.
 -  DRILL HOLE - Showing thickness of coal, in feet.
 -  POINT OF MEASUREMENT - Showing thickness of coal, in feet. Includes all points of measurement other than drill holes.
 - FU[1]** - FU[1] of Lower Fort Union Coal Zone
F1 - F1 of Lower Fort Union Coal Zone
 - COAL BED SYMBOLS AND NAMES** - Coal beds identified by bracketed numbers are not formally named, but are numbered for identification purposes in this quadrangle only.
 -  TRACE OF COAL BED OUTCROP - Showing symbol of name of coal bed as listed above. Arrow points toward coal-bearing area. Dashed where inferred; short dashed where inferred by present authors.
- To convert feet to meters, multiply feet by 0.3048.



Base from U.S. Geological Survey, 1966

Scale 1:24,000

UTM GRID AND 1966 MAGNETIC NORTH DECLINATION AT CENTER OF SHEET

WYOMING
QUADRANGLE LOCATION

Compiled in 1977/1978

**COAL RESOURCE OCCURRENCE MAP OF THE FILLMORE RANCH
QUADRANGLE, CARBON COUNTY, WYOMING**

**BY
DAMES & MOORE
1978**

This report has not been edited for conformity with U.S. Geological Survey editorial standards or stratigraphic nomenclature.

PLATE 27
ISOPACH MAP OF THE F1 COAL BED
AND THE FU[1] COAL BED