

4466 I NW
ROUND BOTTOM

UNITED STATES
DEPARTMENT OF THE INTERIOR
GEOLOGICAL SURVEY

HAMILTON QUADRANGLE
COLORADO—MOFFAT CO.
7.5 MINUTE SERIES (TOPOGRAPHIC)
SE/4 MONUMENT BUTTE 15' QUADRANGLE

4466 I V
DARTON PEAK
162 500

OPEN FILE REPORT 78-628
PLATE 36 OF 43

EXPLANATION

200
OVERBURDEN ISOPACHS - Showing thickness of overburden, in feet, from surface to top of coal bed. Dashed where vertical accuracy possibly not within 40 feet. Isopach interval 100 feet (31 m) over strip-pable coal and 200 feet (61 m) beyond the stripping-limit line.

O 101
DRILL HOLE - Showing thickness of overburden, in feet, from surface to top of coal bed.

15
MINING-RATIO CONTOUR - Number indicates cubic yards of overburden per ton of recoverable coal by surface mining methods. Contours shown only in areas underlain by coal of Reserve Base thickness within the stripping-limit (in this quadrangle, the 200-foot-overburden isopach). To convert mining ratio to cubic meters of overburden per metric ton of recoverable coal, multiply mining ratio by 0.8428.

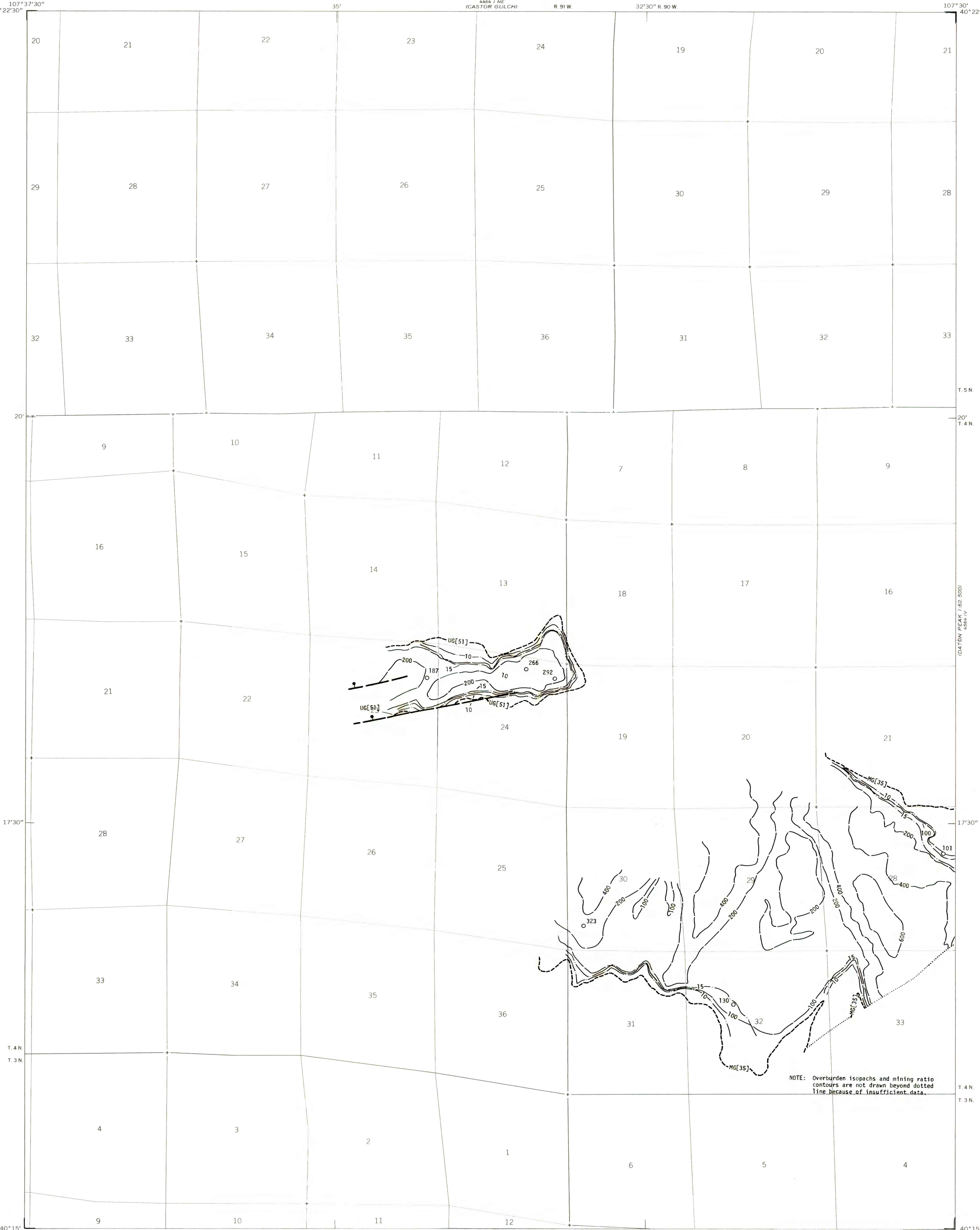
UG - Upper Coal Group
Mg - Middle Coal Group

COAL BED SYMBOLS AND NAMES - Coal beds identified by bracketed numbers are not formally named, but are numbered for identification purposes in this quadrangle only.

----- Mg[35] -----
TRACE OF COAL BED OUTCROP - Showing symbol of name of coal bed as listed above. Short dashed where projected by present authors.

TRACE OF FAULT - Bar and ball on down-thrown side. Dashed where inferred or approximately located.

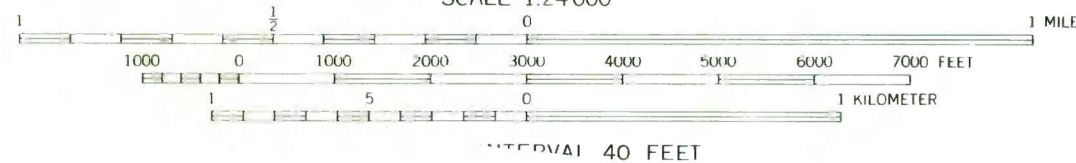
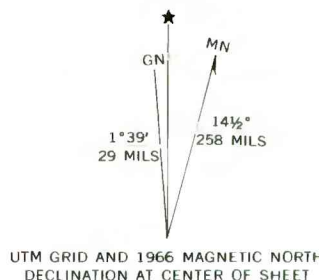
To convert feet to meters, multiply feet by 0.3048.



4466 I NW
ROUND BOTTOM

Base from U.S. Geological Survey, 1966

This report has not been edited for conformity with U.S. Geological Survey editorial standards or stratigraphic nomenclature.



COAL RESOURCE OCCURRENCE MAP OF THE HAMILTON
QUADRANGLE, MOFFAT COUNTY, COLORADO

BY
DAMES & MOORE
1978

PLATE 36

OVERBURDEN ISOPACH AND MINING
RATIO MAP OF THE MIDDLE COAL
GROUP, COAL BED [35] AND THE
UPPER COAL GROUP, COAL BED [51]