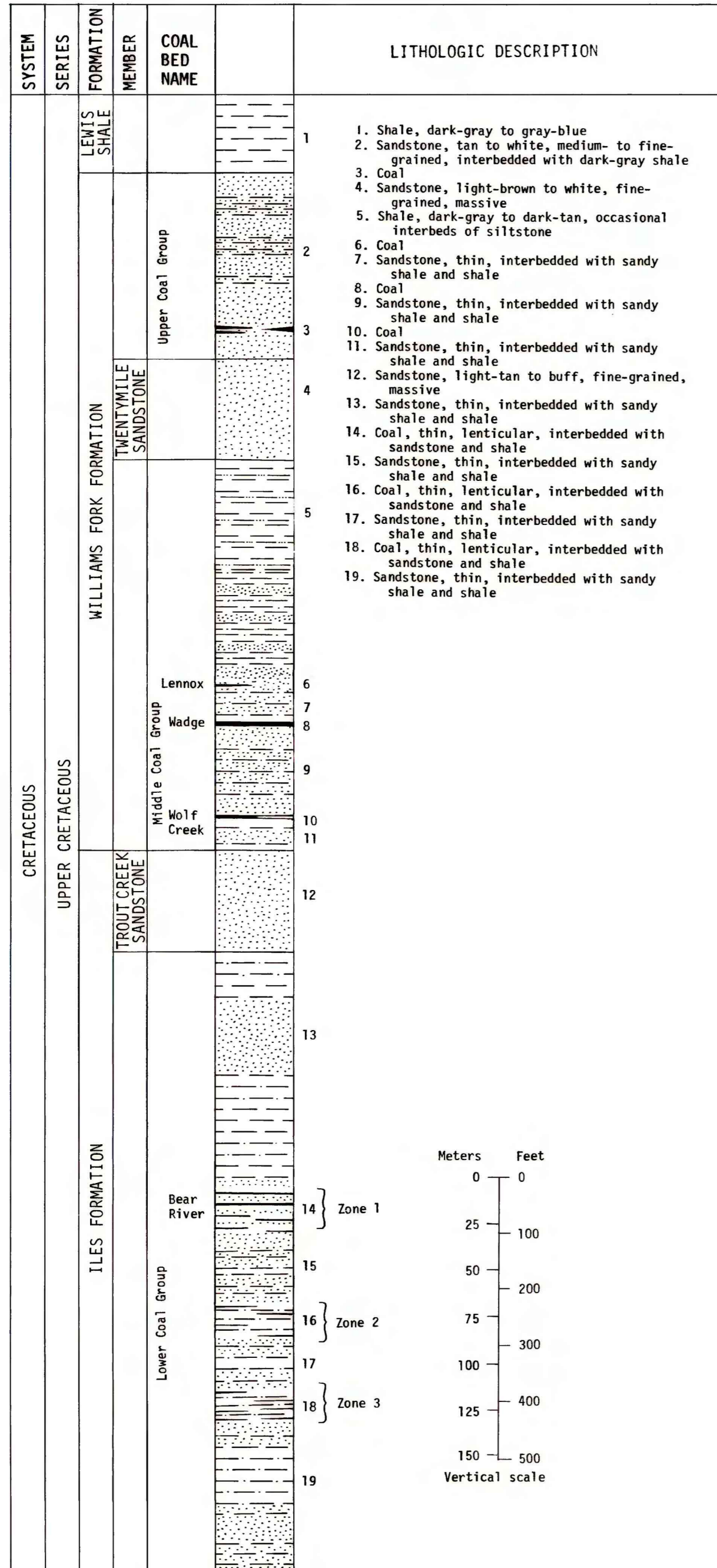


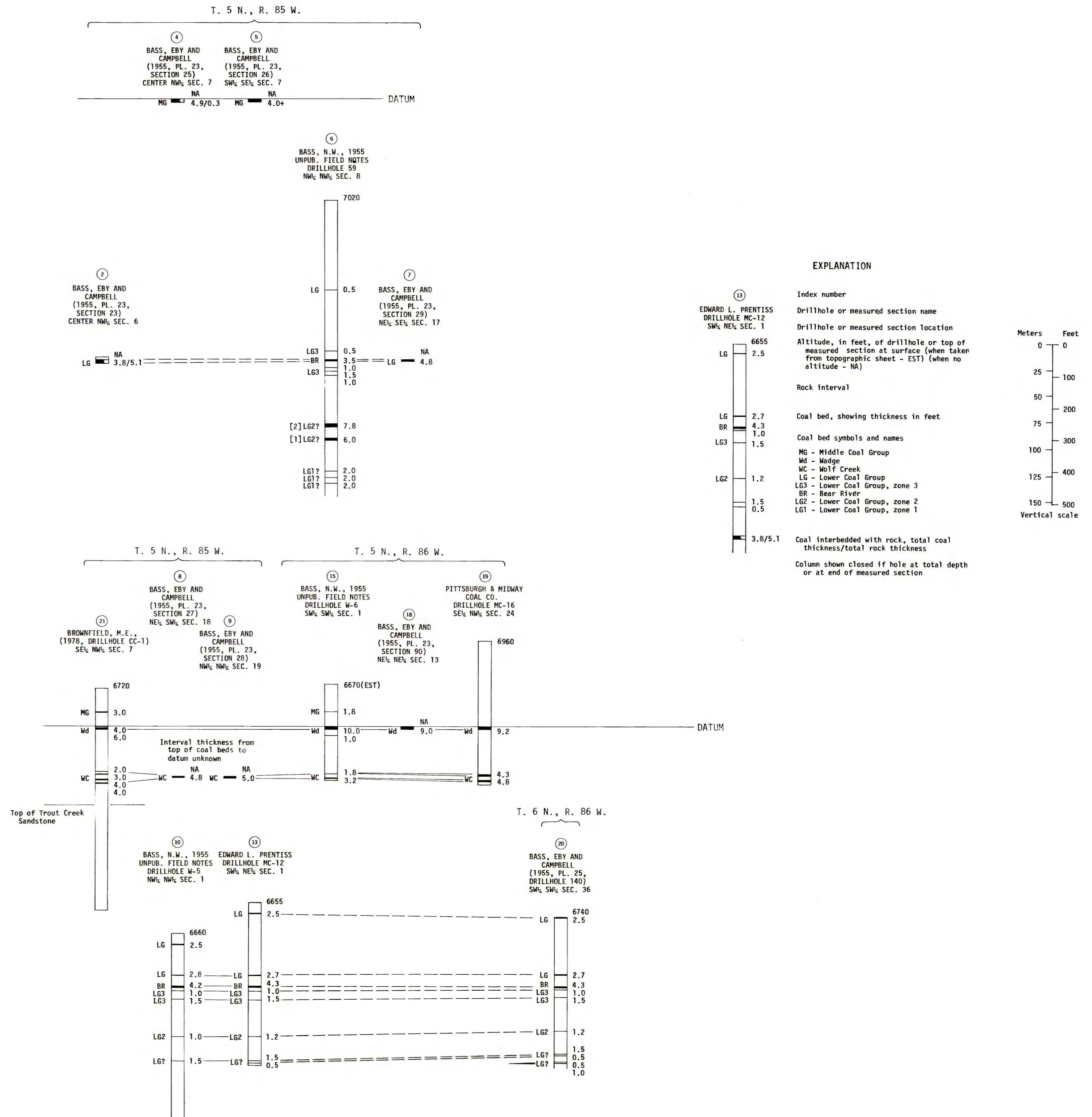
COMPOSITE COLUMNAR SECTION



REFERENCES

- Bass, N.W., 1955, Unpublished field notes: U.S. Geol. Survey.
 Bass, N.W., Eby, J.B., and Campbell, M.R., 1955, Geology and mineral fuels of parts of Routt and Moffat Counties, Colorado: U.S. Geol. Survey Bull. 1027-D, p. 143-250.
 Brownfield, M.E., 1978, Reconnaissance drilling during 1977 in the Yampa coal field, Moffat and Routt Counties, Colorado: U.S. Geol. Survey Open-File report 78-365, 135 p.
 U.S. Geol. Survey, 1930, Inactive coal lease No. Denver 035183, E.L. Prentiss.
 1969, Coal prospecting permit No. Colorado 794, Pittsburgh and Midway Coal Co.

CORRELATION OF COAL BEDS IN DRILL HOLES AND MEASURED SECTIONS



COAL RESOURCE OCCURRENCE MAP OF THE COW CREEK QUADRANGLE, ROUTT COUNTY, COLORADO
BY
DAMES & MOORE
1978