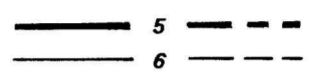


OPEN-FILE REPORT
This report has not been edited for conformity with U.S. Geological Survey editorial standards or stratigraphic nomenclature

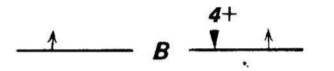
OPEN FILE REPORT 78-651

PLATE 19 OF 64

EXPLANATION



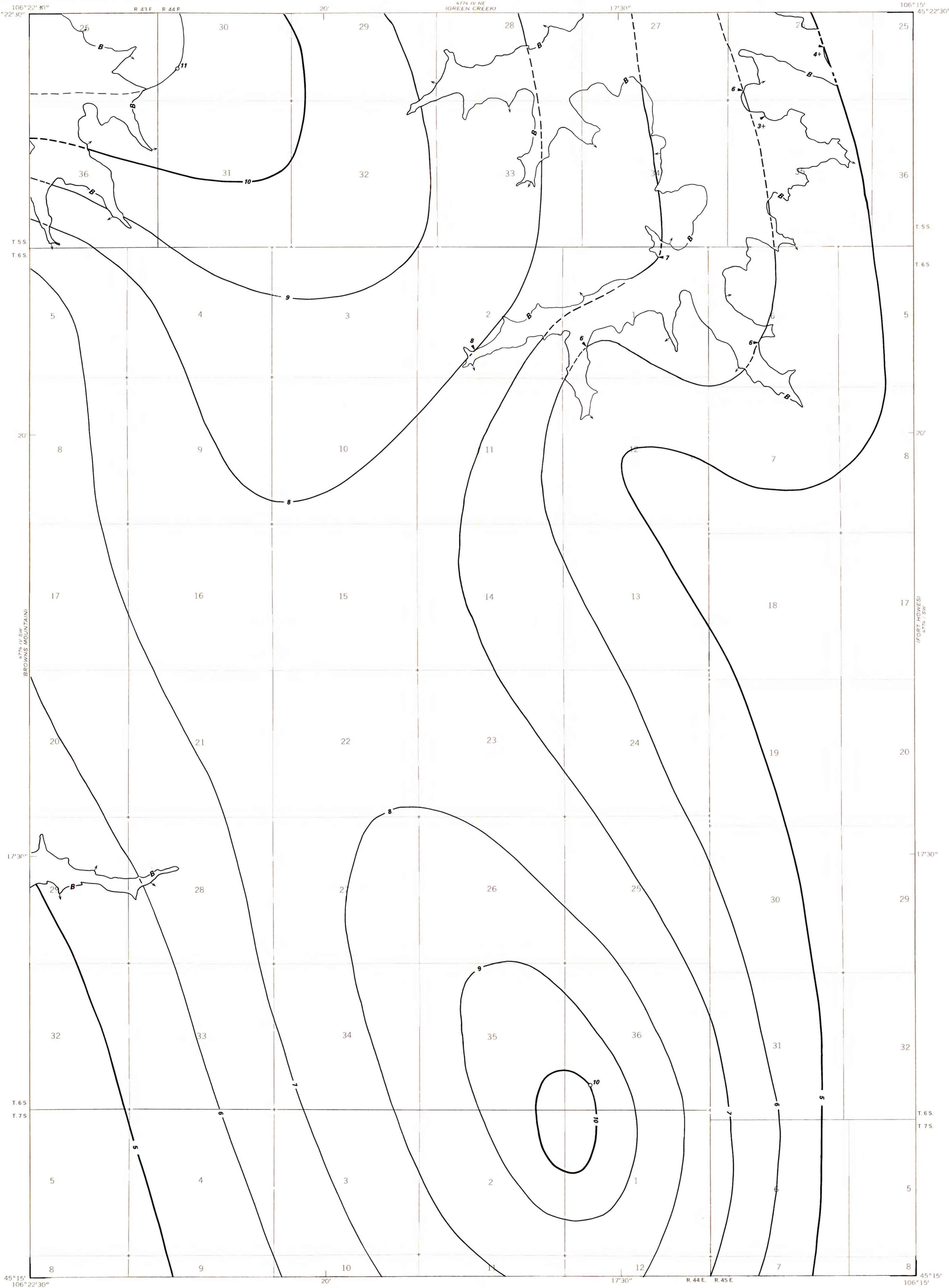
ISOPACHS OF THE COAL BED--
Showing thickness, in feet.
Dashed where projected beyond boundary of Reserve Base coal. Isopach interval 1 foot (0.3 m). Not shown where coal is thinner than 5 feet (1.5 m).



BOUNDARY OF RESERVE BASE
COAL--Drawn along the outcrop of coal bed or the contact between burned and unburned coal. Arrows point toward area of Reserve Base coal. Number is thickness, in feet, of coal bed at triangle. Plus (+) sign after number indicates incomplete measurement.

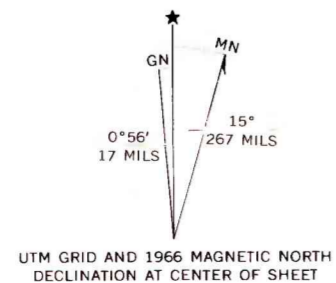
DRILL HOLE--Showing thickness of coal bed, in feet.

To convert feet to meters, multiply by 0.3.



Base from U.S. Geological Survey, 1966

Compiled in 1977



COAL RESOURCE OCCURRENCE AND COAL DEVELOPMENT POTENTIAL MAPS OF THE
POKER JIM BUTTE QUADRANGLE, ROSEBUD AND POWDER RIVER COUNTIES, MONTANA

BY
W. J. MAPEL, B. K. MARTIN, AND B. A. BUTLER
1978

PLATE 19
ISOPACH MAP OF THE
LOWER CANYON COAL BED