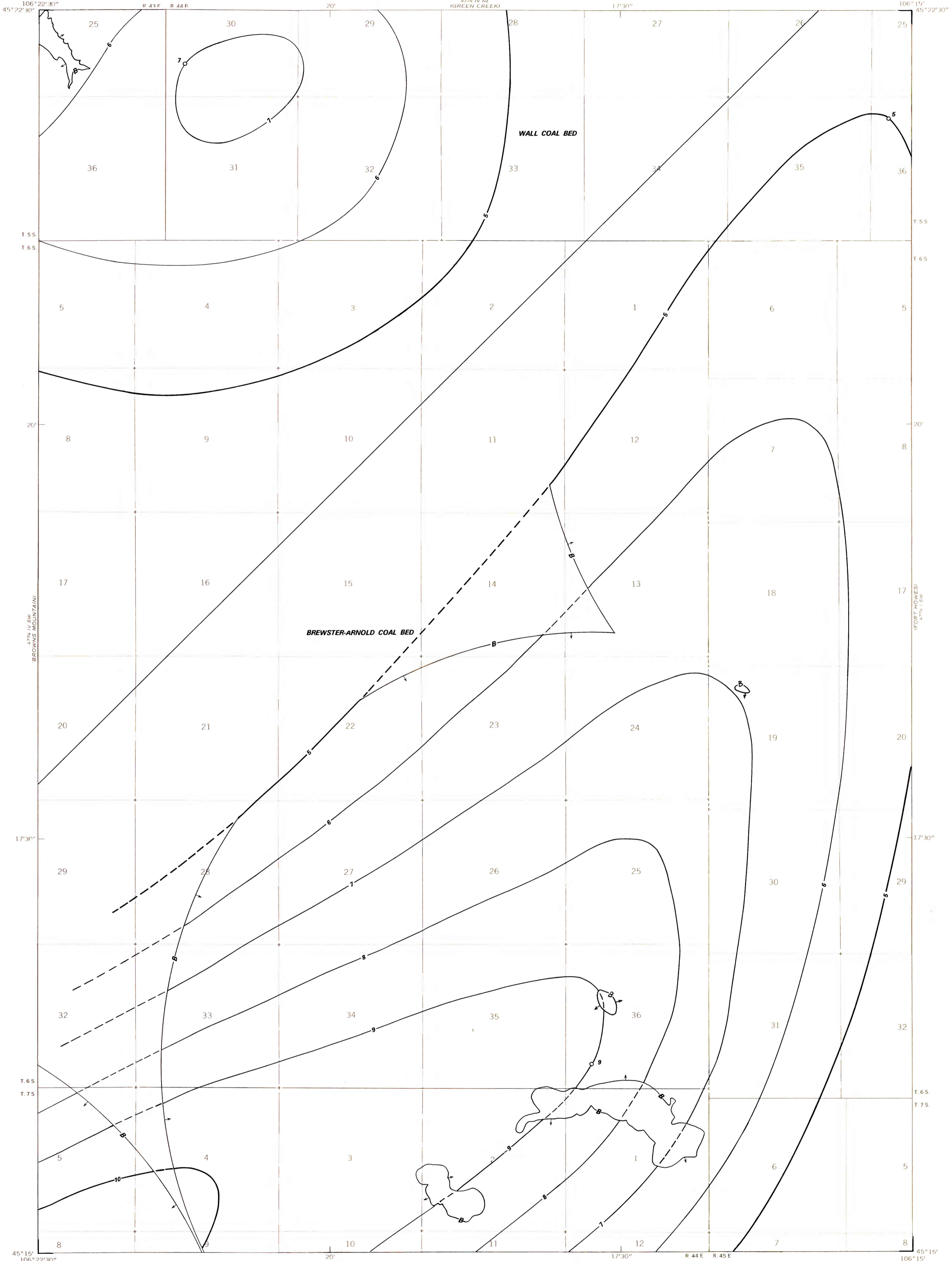


Day School

45° 22' 30" WING MOUNTAIN



OPEN-FILE REPORT
This report has not been edited for conformity with U.S. Geological Survey editorial standards or stratigraphic nomenclature

OPEN FILE REPORT 78-651

PLATE 34 OF 64

EXPLANATION

————— 5 —————
————— 6 —————

ISOPACHS OF THE COAL BED--
Showing thickness, in feet.
Dashed where projected beyond boundary of Reserve Base coal. Isopach interval 1 foot (0.3 m).

↑ B ↑

BOUNDARY OF RESERVE BASE COAL--Drawn along the outcrop of coal bed or the contact between the burned and unburned coal, the 1,000-foot (305-m) overburden isopach, and an arc 3 miles (4.8 km) from nearest complete measurement of coal bed. Arrows point toward area of Reserve Base coal.

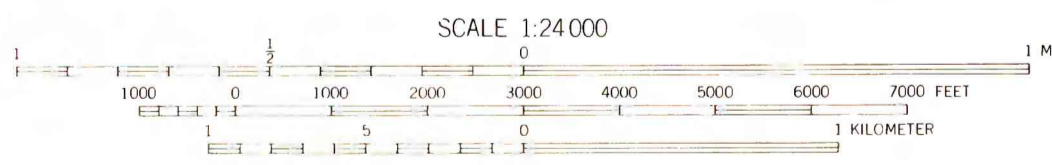
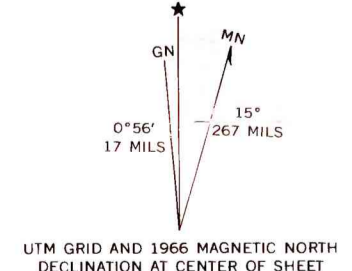
○

DRILL HOLE--Showing thickness of coal bed, in feet.

To convert feet to meters, multiply by 0.3.

Base from U.S. Geological Survey, 1966

Compiled in 1977



**COAL RESOURCE OCCURRENCE AND COAL DEVELOPMENT POTENTIAL MAPS OF THE
POKER JIM BUTTE QUADRANGLE, ROSEBUD AND POWDER RIVER COUNTIES, MONTANA**

BY
W. J. MAPEL, B. K. MARTIN, AND B. A. BUTLER
1978

PLATE 34
**ISOPACH MAPS OF THE
WALL AND BREWSTER-
ARNOLD COAL BEDS**