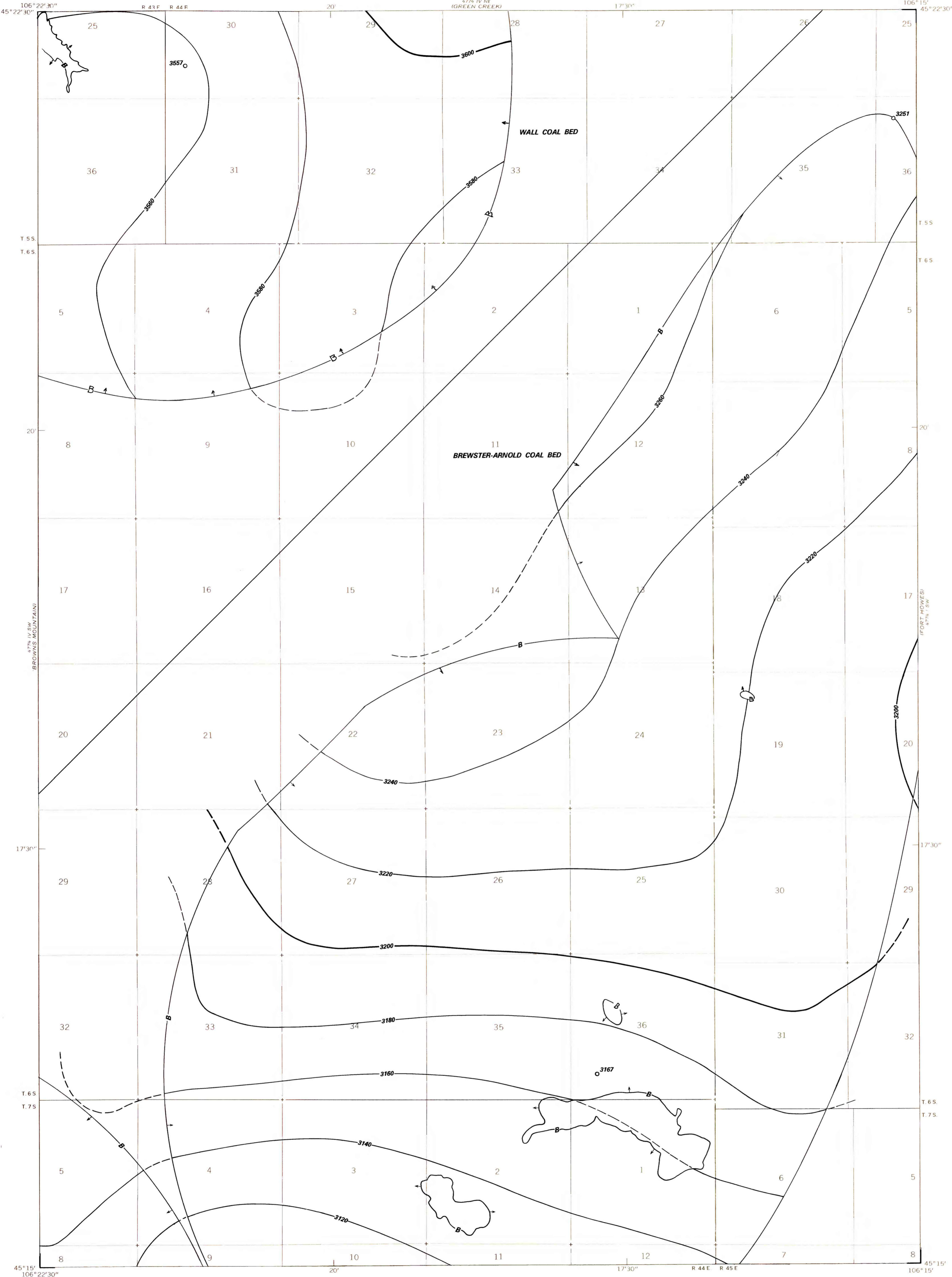


100-348
D-17, SCHOOL

47° 15' N
106° 15' W
BROWN'S MOUNTAIN



OPEN-FILE REPORT
This report has not been edited for conformity with U.S. Geological Survey editorial standards or stratigraphic nomenclature.

OPEN FILE REPORT 78-651

PLATE 35 OF 64

EXPLANATION

— 3200 —
- - - 3180 - - -

STRUCTURE CONTOURS—Drawn on top of the coal bed. Dashed where projected beyond boundary of Reserve Base coal. Contour interval 20 feet (6.1 m). Datum is mean sea level.

↑ B ↑

BOUNDARY OF RESERVE BASE COAL—Drawn along the outcrop of coal bed or the contact between the burned and unburned coal, the 5-foot (1.5-m) coal isopach, the 1,000-foot (305-m) overburden isopach, and an arc 3 miles (4.8 km) from nearest complete measurement of coal bed. Arrows point toward area of Reserve Base coal.

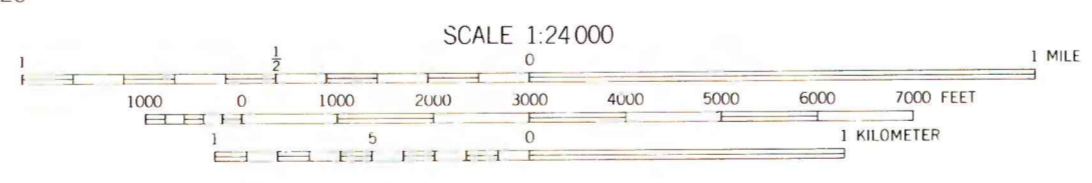
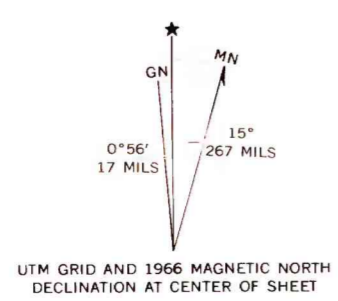
○ 3167

DRILL HOLE—Showing altitude, in feet, at the top of the coal bed.

To convert feet to meters, multiply by 0.3.

Base from U.S. Geological Survey, 1966

Compiled in 1977



**COAL RESOURCE OCCURRENCE AND COAL DEVELOPMENT POTENTIAL MAPS OF THE
POKER JIM BUTTE QUADRANGLE, ROSEBUD AND POWDER RIVER COUNTIES, MONTANA**

BY
W. J. MAPEL, B. K. MARTIN, AND B. A. BUTLER
1978

PLATE 35
STRUCTURE CONTOUR MAPS
OF THE WALL AND BREWSTER-
ARNOLD COAL BEDS