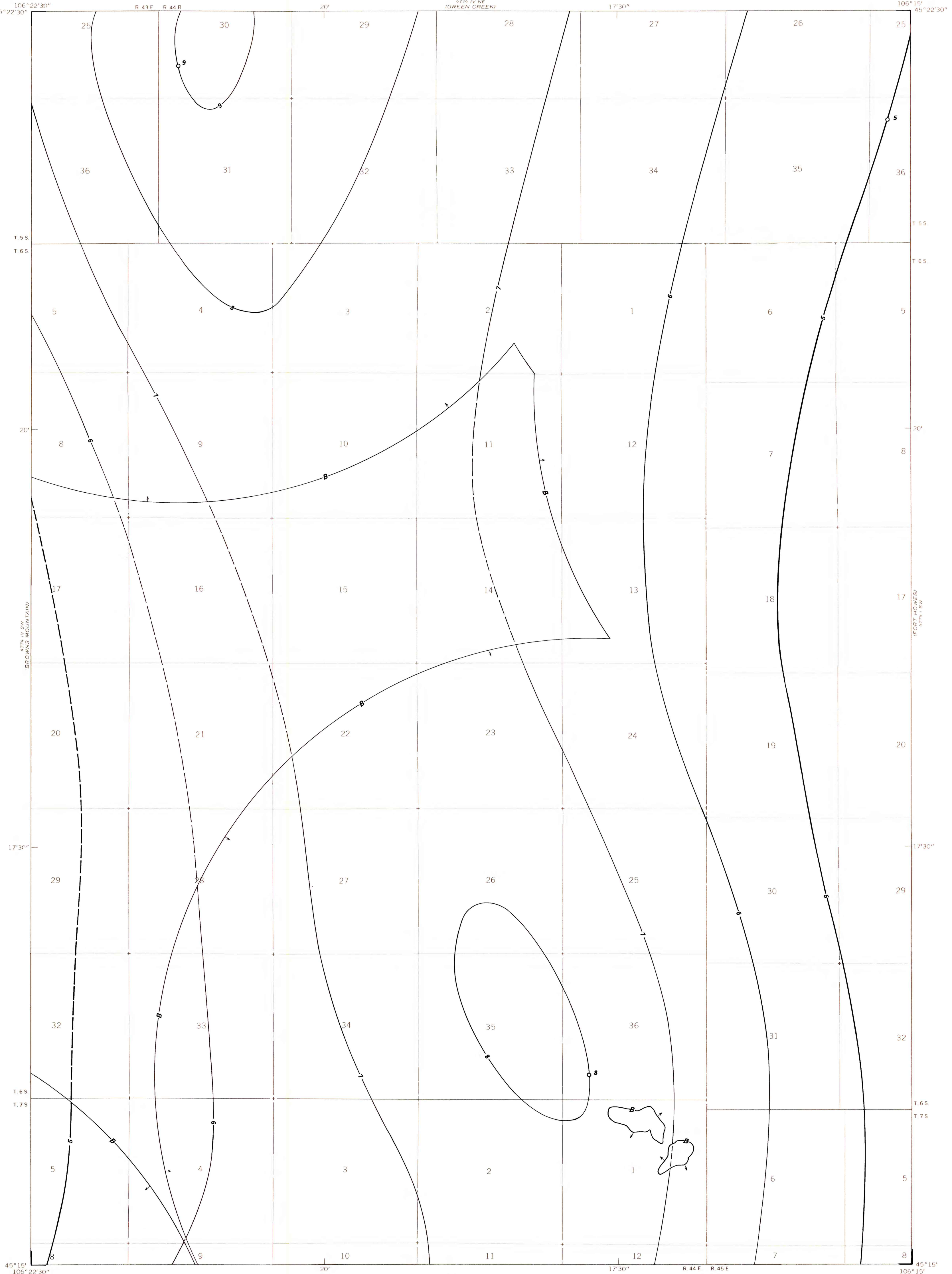


106° 22' 30" W
45° 22' 30" N

106° 15' W
45° 15' N

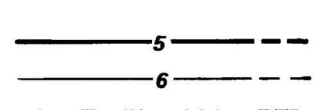


OPEN-FILE REPORT
This report has not been edited for conformity with U.S. Geological Survey editorial standards or stratigraphic nomenclature.

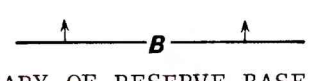
OPEN FILE REPORT 78-651

PLATE 39 OF 64

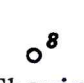
EXPLANATION



ISOPACHS OF THE COAL BED--
 Showing thickness, in feet.
 Dashed where projected
 beyond boundary of Reserve
 Base coal. Isopach interval
 1 foot (0.3 m).



**BOUNDARY OF RESERVE BASE
 COAL**--Drawn along the 1,000-
 foot overburden isopach, and
 an arc 3 miles (4.8 km) from
 nearest complete measurement
 of coal bed. Arrows point
 toward area of Reserve Base
 coal.

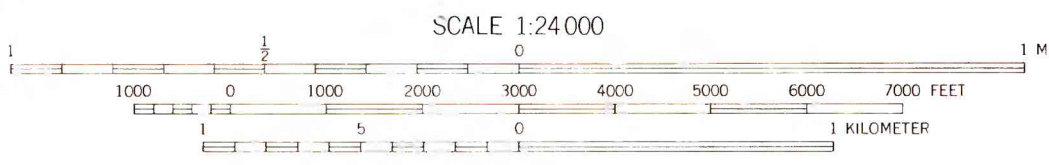
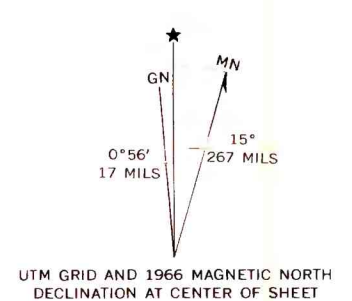


DRILL HOLE--Showing thickness
 of coal bed, in feet.

To convert feet to meters,
multiply by 0.3.

Base from U.S. Geological Survey, 1966

Compiled in 1977



**COAL RESOURCE OCCURRENCE AND COAL DEVELOPMENT POTENTIAL MAPS OF THE
POKER JIM BUTTE QUADRANGLE, ROSEBUD AND POWDER RIVER COUNTIES, MONTANA**

BY
W. J. MAPEL, B. K. MARTIN, AND B. A. BUTLER
1978

PLATE 39
ISOPACH MAP OF THE
POKER JIM COAL BED