

EXPLANATION

— 27 —
ISOPACHS OF THE COAL BED—
Showing thickness in feet.
Isopach interval 1 foot, or
2 feet.

○ 19C
○ 29
○ 2R
○ 2C
DRILL HOLE—Showing thickness
of coal bed, or thickness of
coal (C) and rock (R), in
feet.

▲ 16L
Number at triangle shows thickness
in feet of lower split
of coal bed.

↑ B ↑
BOUNDARY OF RESERVE BASE
COAL—Drawn along the outcrop
of the coal bed and the contact
between burned and unburned
coal. Arrows point toward
area of Reserve Base coal.

▨
Area inferred to be underlain by
coal in lower split only.

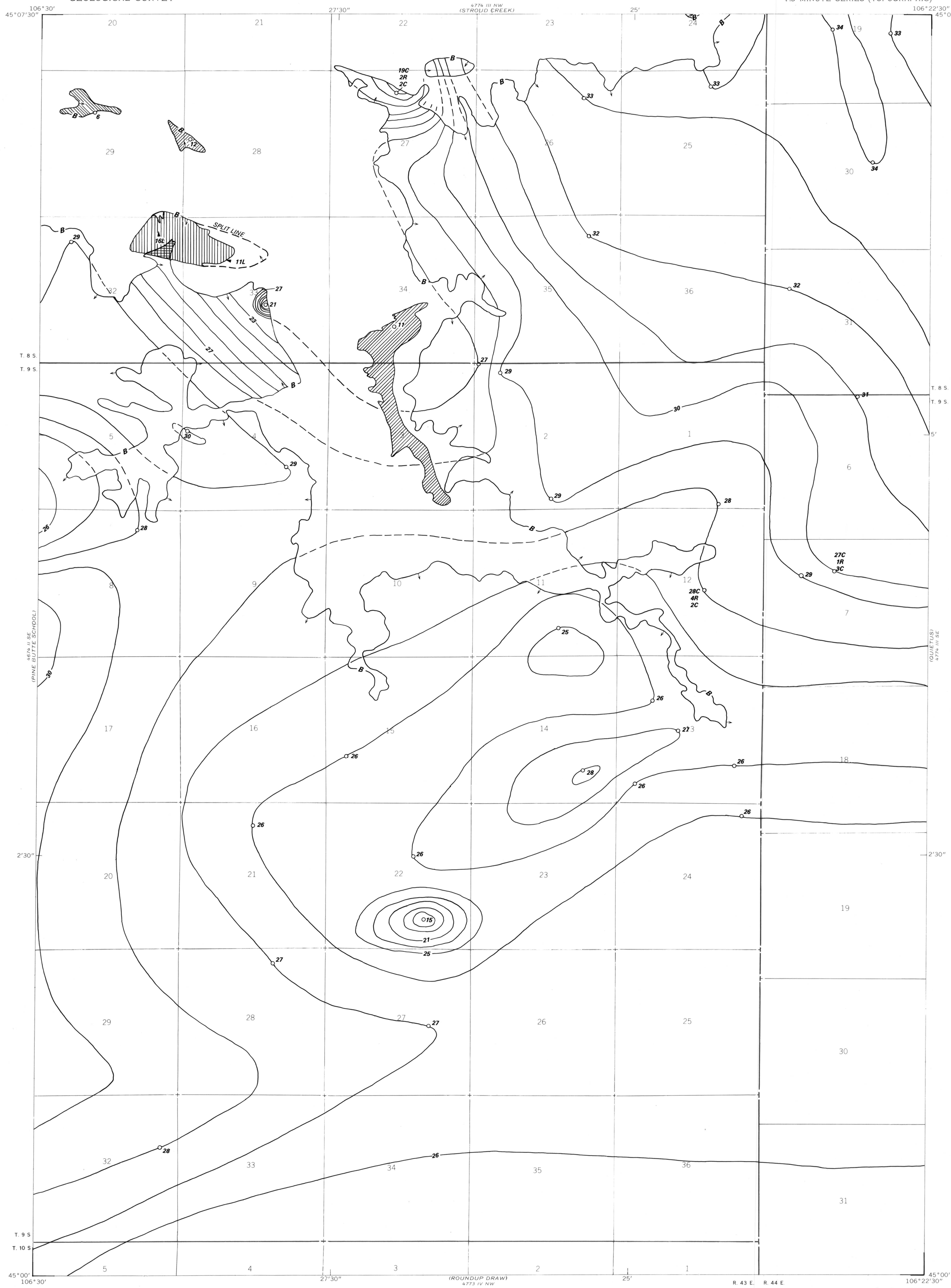
▨
Area inferred to be underlain
by coal in upper and lower
splits.

▨
Coal inferred to be of poor
quality because of erosion
and weathering.

▨
Coal inferred to be of poor
quality because bed is
mostly burned.

Inferred line of splitting of
coal bed. Locally coincides
with boundary of Reserve Base
coal.

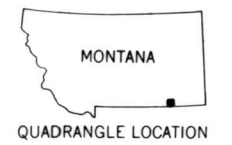
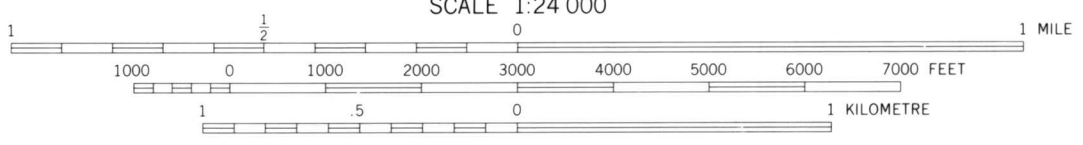
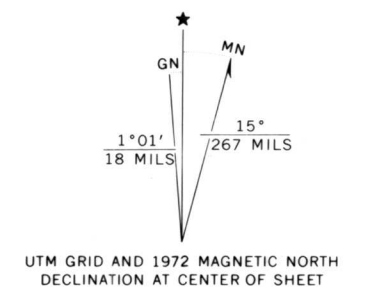
To convert feet to meters,
multiply by 0.3.



Base from U.S. Geological Survey, 1972

SCALE 1:24 000

Compiled in 1977



COAL RESOURCE OCCURRENCE AND COAL DEVELOPMENT POTENTIAL
MAPS OF THE FORKS RANCH QUADRANGLE, BIG HORN COUNTY, MONTANA

By
W. C. CULBERTSON, L. N. ROBINSON, AND T. M. GAFFKE
1979

PLATE 14
ISOPACH MAP OF THE
ANDERSON COAL BED