

EXPLANATION

**STRUCTURE CONTOURS**--Drawn on top of the coal bed, (solid line) or on top of lower split (dot-dash line). Hachures indicate a closed depression. Contour interval 20 feet (6.1 m). Datum is mean sea level. Dashed where projected beyond boundary of coal.

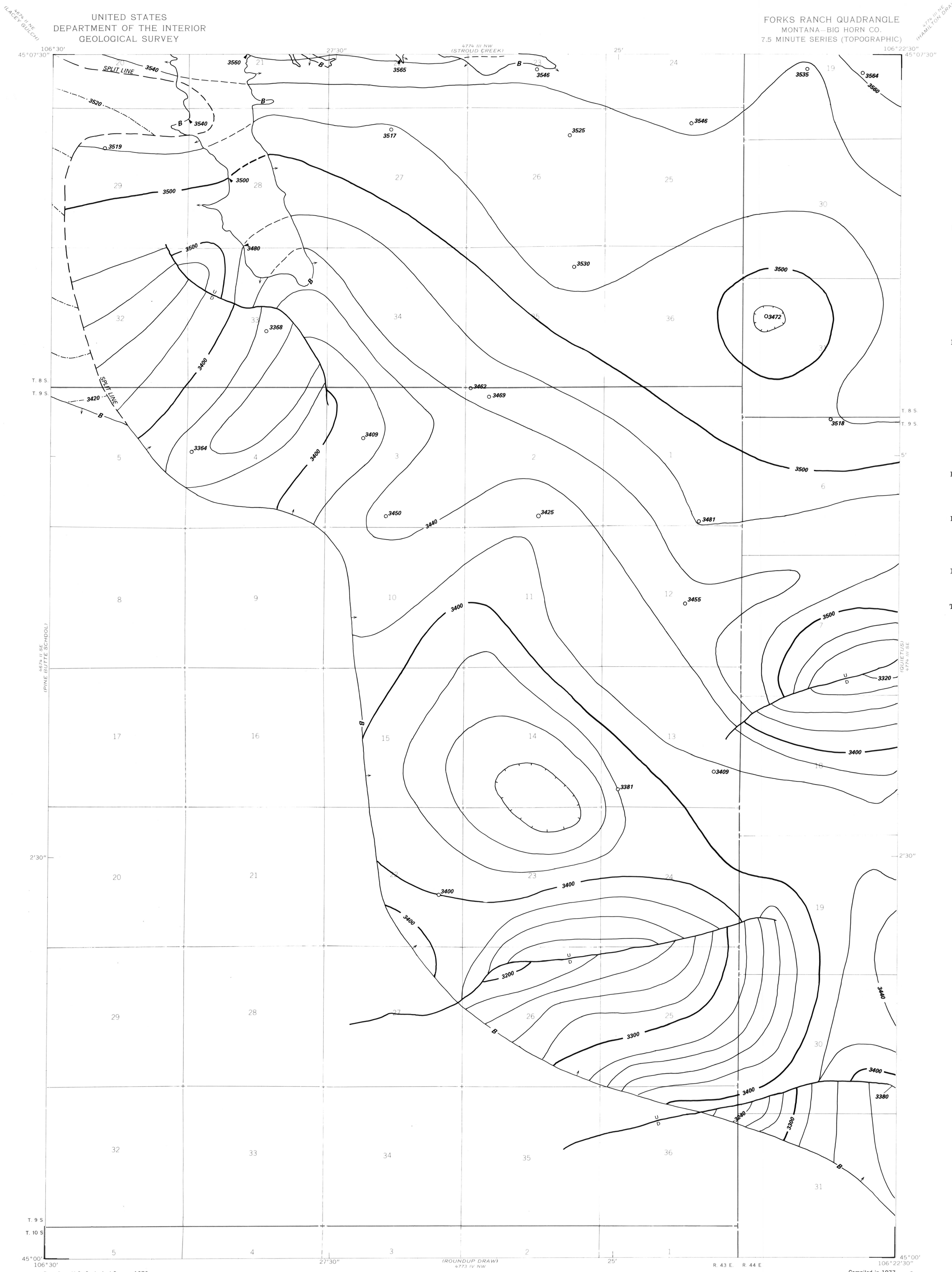
**BOUNDARY OF RESERVE BASE COAL**--Drawn along the outcrop of the coal bed and the contact between burned and unburned coal where the coal bed is 5 feet (1.5 m) or more thick; and the 5-foot (1.5 m) coal isopach. Arrows point toward area of Reserve Base coal. Number is altitude in feet of top of coal bed at triangle.

**FAULT**--U, upthrown side; D, downthrown side.

**DRILL HOLE**--Showing altitude of the top of the coal bed, in feet.

**SPLIT LINE**--Inferred line of splitting of coal bed. Not shown where it coincides with boundary line.

To convert feet to meters, multiply by 0.3.



COAL RESOURCE OCCURRENCE AND COAL DEVELOPMENT POTENTIAL  
MAPS OF THE FORKS RANCH QUADRANGLE, BIG HORN COUNTY, MONTANA

By  
W. C. CULBERTSON, L. N. ROBINSON, AND T. M. GAFFKE  
1979