

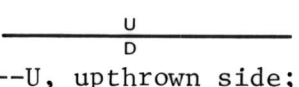
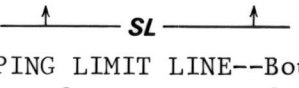


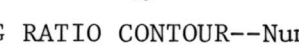
EXPLANATION

 600
OVERBURDEN ISOPACHS--Showing
thickness of overburden in
feet from surface to top of
coal bed. Isopach interval
200 feet.

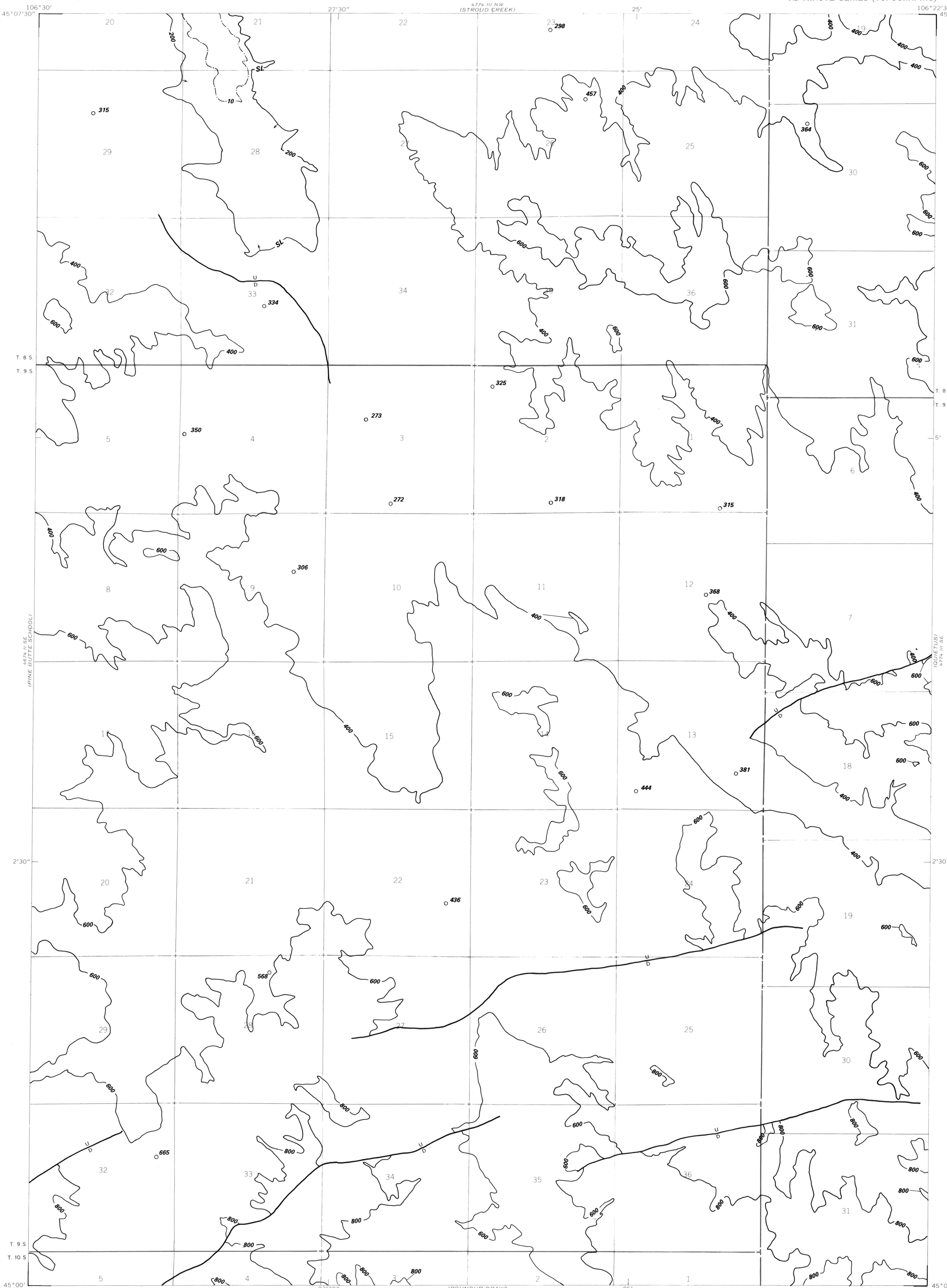
 364
DRILL HOLE--Showing thickness
in feet of overburden from
surface to top of coal bed.

 U
D
FAULT--U, upthrown side; D,
downthrown side.

 SL
STRIPPING LIMIT LINE--Boundary
for surface mining of the
coal bed (in this quadrangle,
the 200-foot-overburden iso-
pach). Arrows point toward
the area suitable for surface
mining.

 10
MINING RATIO CONTOUR--Number
indicates cubic yards of
overburden per short ton of
recoverable coal by surface
mining methods. Contours
shown only within the strip-
ping limit.

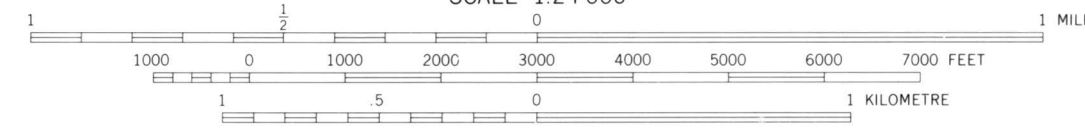
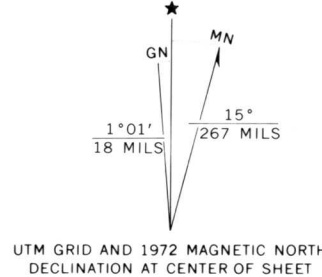
To convert feet to meters,
multiply by 0.3. To convert
cubic yards of overburden
per short ton of recoverable
coal to cubic meters of
overburden per metric ton of
recoverable coal, multiply
by 0.84.



Base from U.S. Geological Survey, 1972

SCALE 1:24 000

Compiled in 1977



COAL RESOURCE OCCURRENCE AND COAL DEVELOPMENT POTENTIAL
MAPS OF THE FORKS RANCH QUADRANGLE, BIG HORN COUNTY, MONTANA

By

W. C. CULBERTSON, L. N. ROBINSON, AND T. M. GAFFKE
1979