

EXPLANATION

— 3200 —
— 3180 —

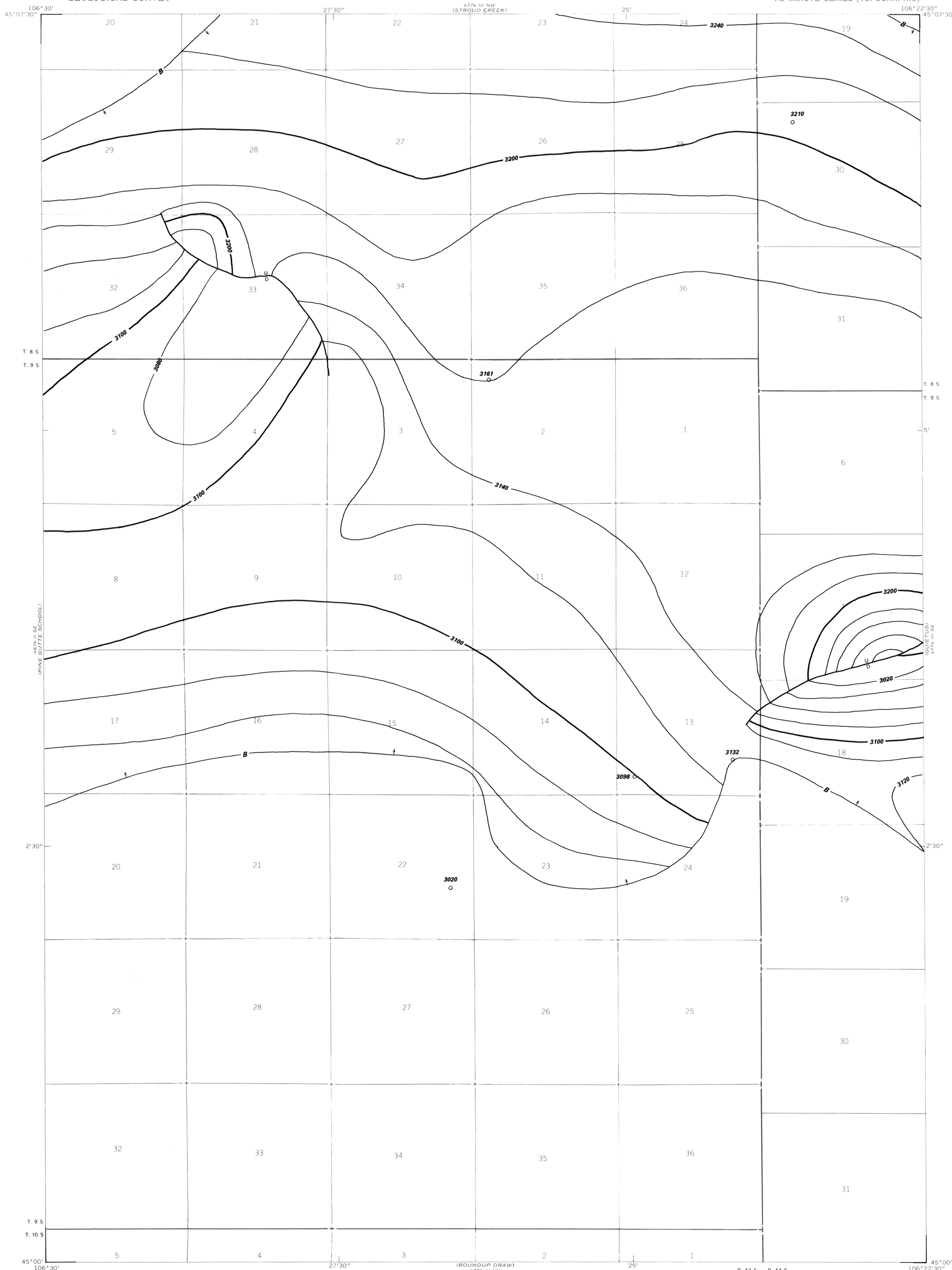
STRUCTURE CONTOURS—Drawn on top of the coal bed. Contour interval 20 feet (6.1 m). Datum is mean sea level.

— U —
— D —
FAULT—U, upthrown side; D, downthrown side.

○ 3161
DRILL HOLE—Showing altitude of the top of the coal bed, in feet.

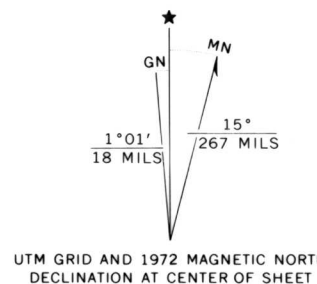
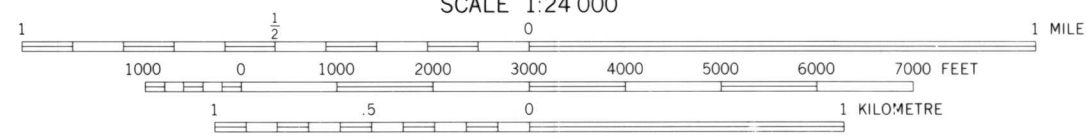
— B —
BOUNDARY OF RESERVE BASE COAL—Drawn along the 5-foot (1.5 m) coal isopach. Arrows point toward Reserve Base coal.

To convert feet to meters, multiply by 0.3.



Base from U.S. Geological Survey, 1972

SCALE 1:24 000



COAL RESOURCE OCCURRENCE AND COAL DEVELOPMENT POTENTIAL
MAPS OF THE FORKS RANCH QUADRANGLE, BIG HORN COUNTY, MONTANA

By

W. C. CULBERTSON, L. N. ROBINSON, AND T. M. GAFFKE

1979