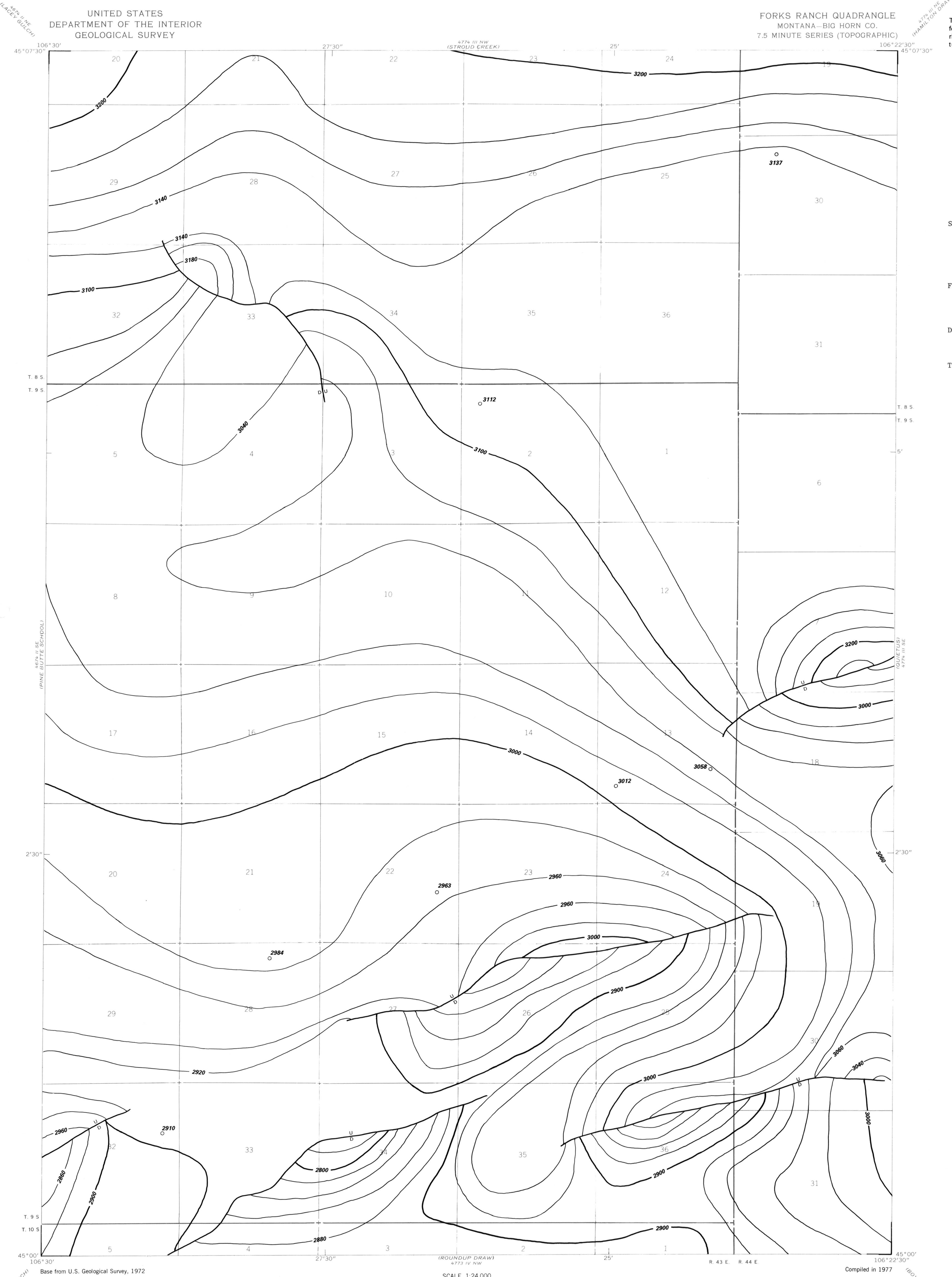


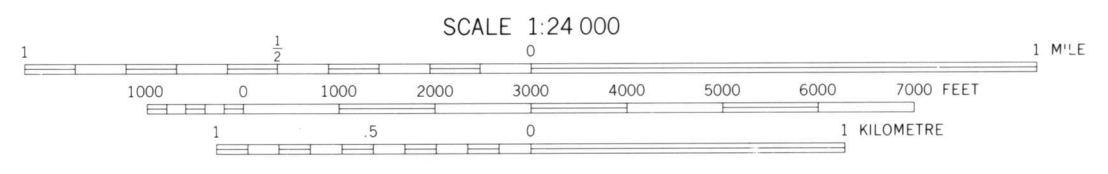
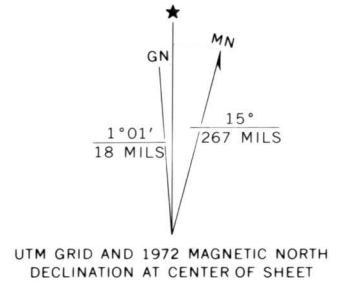
EXPLANATION

- 3100
- 3080
- STRUCTURE CONTOURS—Drawn on top of the coal bed. Contour interval 20 feet (6.1 m). Datum is mean sea level.
- FAULT—U, upthrown side; D, downthrown side.
- DRILL HOLE—Showing altitude of the top of the coal bed, in feet.
- To convert feet to meters, multiply by 0.3.



Base from U.S. Geological Survey, 1972

Compiled in 1977



COAL RESOURCE OCCURRENCE AND COAL DEVELOPMENT POTENTIAL  
MAPS OF THE FORKS RANCH QUADRANGLE, BIG HORN COUNTY, MONTANA

By  
W. C. CULBERTSON, L. N. ROBINSON, AND T. M. GAFFKE  
1979