

45° 07' 30" N
106° 13' 00" W
LACEY BUTTE

UNITED STATES
DEPARTMENT OF THE INTERIOR
GEOLOGICAL SURVEY

FORKS RANCH QUADRANGLE
MONTANA—BIG HORN CO.
7.5 MINUTE SERIES (TOPOGRAPHIC)

45° 07' 30" N
106° 22' 30" W
HAMILTON DRAW

OPEN-FILE REPORT
This report has not been edited for conformity with U.S. Geological Survey editorial standards or stratigraphic nomenclature

OPEN FILE REPORT 78-653

PLATE 36 OF 59

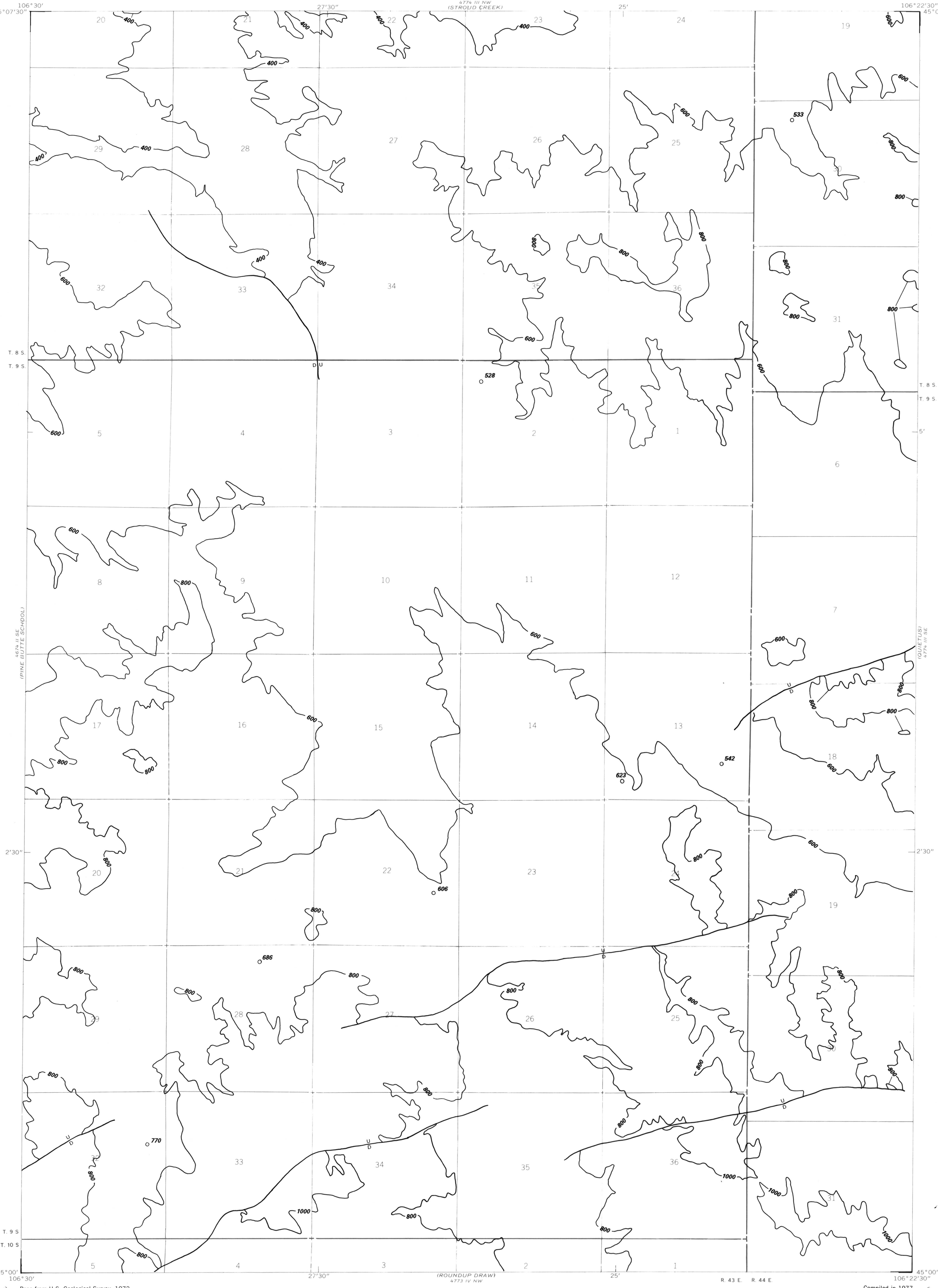
EXPLANATION

800
OVERBURDEN ISOPACHS—Showing thickness of overburden in feet from surface to top of coal bed. Isopach interval 200 feet.

606
DRILL HOLE—Showing thickness in feet of overburden from surface to top of coal bed.

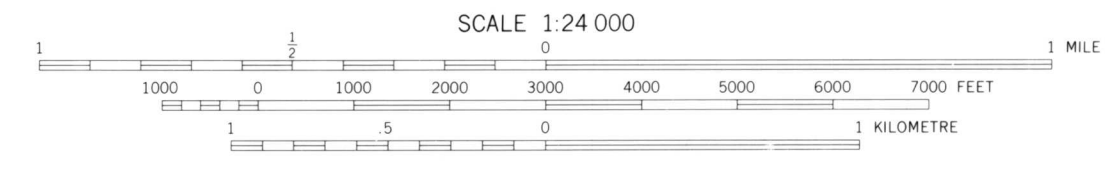
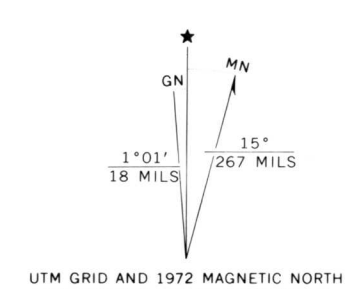
U
D
FAULT—U, upthrown side; D, downthrown side.

To convert feet to meters, multiply by 0.3.



1070 RANCH
4675 NW

Base from U.S. Geological Survey, 1972



Compiled in 1977

45° 00' N
106° 22' 30" W
BROOK ELDER DRAW

COAL RESOURCE OCCURRENCE AND COAL DEVELOPMENT POTENTIAL
MAPS OF THE FORKS RANCH QUADRANGLE, BIG HORN COUNTY, MONTANA

By
W. C. CULBERTSON, L. N. ROBINSON, AND T. M. GAFFKE
1979

PLATE 36
OVERBURDEN ISOPACH MAP
OF THE COOK COAL BED