

EXPLANATION

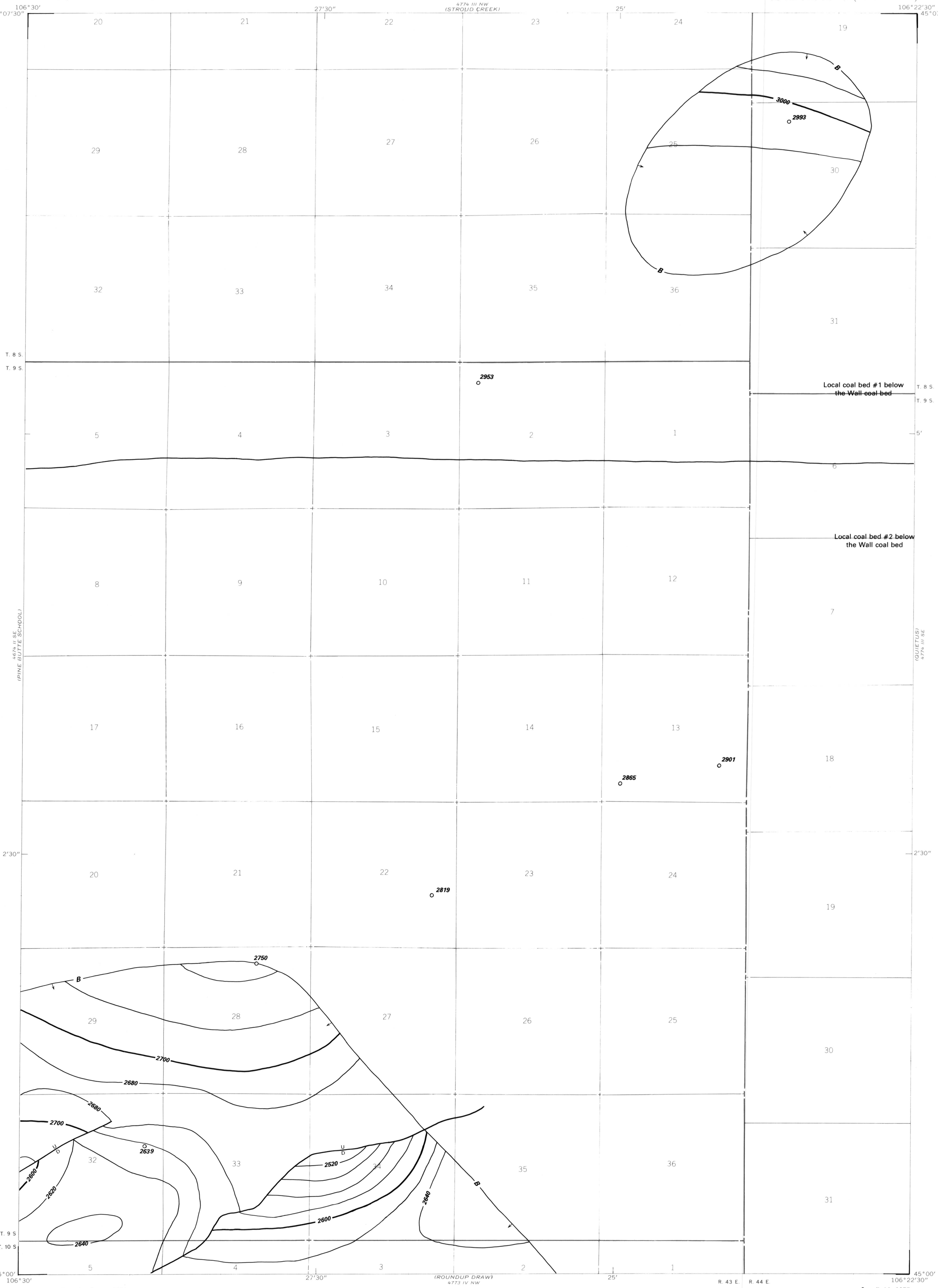
— 3000 —
— 2800 —
STRUCTURE CONTOURS—Drawn on top of the coal bed. Contour interval 20 feet (6.1 m). Datum is mean sea level.

U
D
FAULT—U, upthrown side; D, downthrown side.

○ 2750
○
DRILL HOLE—Showing altitude of the top of the coal bed, in feet.

↑ B ↑
BOUNDARY OF RESERVE BASE COAL—Drawn along the 5-foot (1.5 m) coal isopach. Arrows point toward Reserve Base coal.

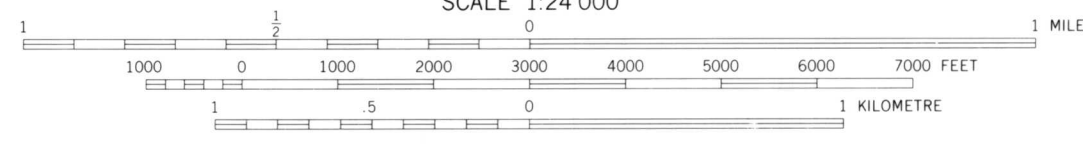
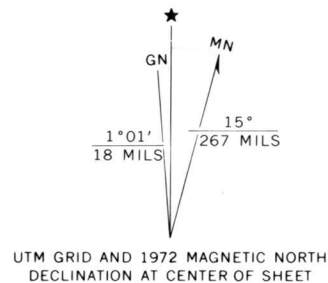
To convert feet to meters, multiply by 0.3.



Base from U.S. Geological Survey, 1972

SCALE 1:24 000

Compiled in 1977



COAL RESOURCE OCCURRENCE AND COAL DEVELOPMENT POTENTIAL
MAPS OF THE FORKS RANCH QUADRANGLE, BIG HORN COUNTY, MONTANA

By
W. C. CULBERTSON, L. N. ROBINSON, AND T. M. GAFFKE
1979