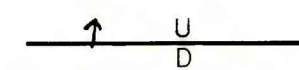


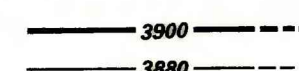
OPEN FILE REPORT
This report has not been edited for conformity with U.S. Geological Survey editorial standards or stratigraphic nomenclature.

OPEN FILE REPORT 78-654
PLATE 5 OF 44

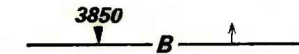
EXPLANATION



FAULT--U, upthrown side; D, downthrown side. Where fault is boundary of coal, arrow points toward coal-bearing area

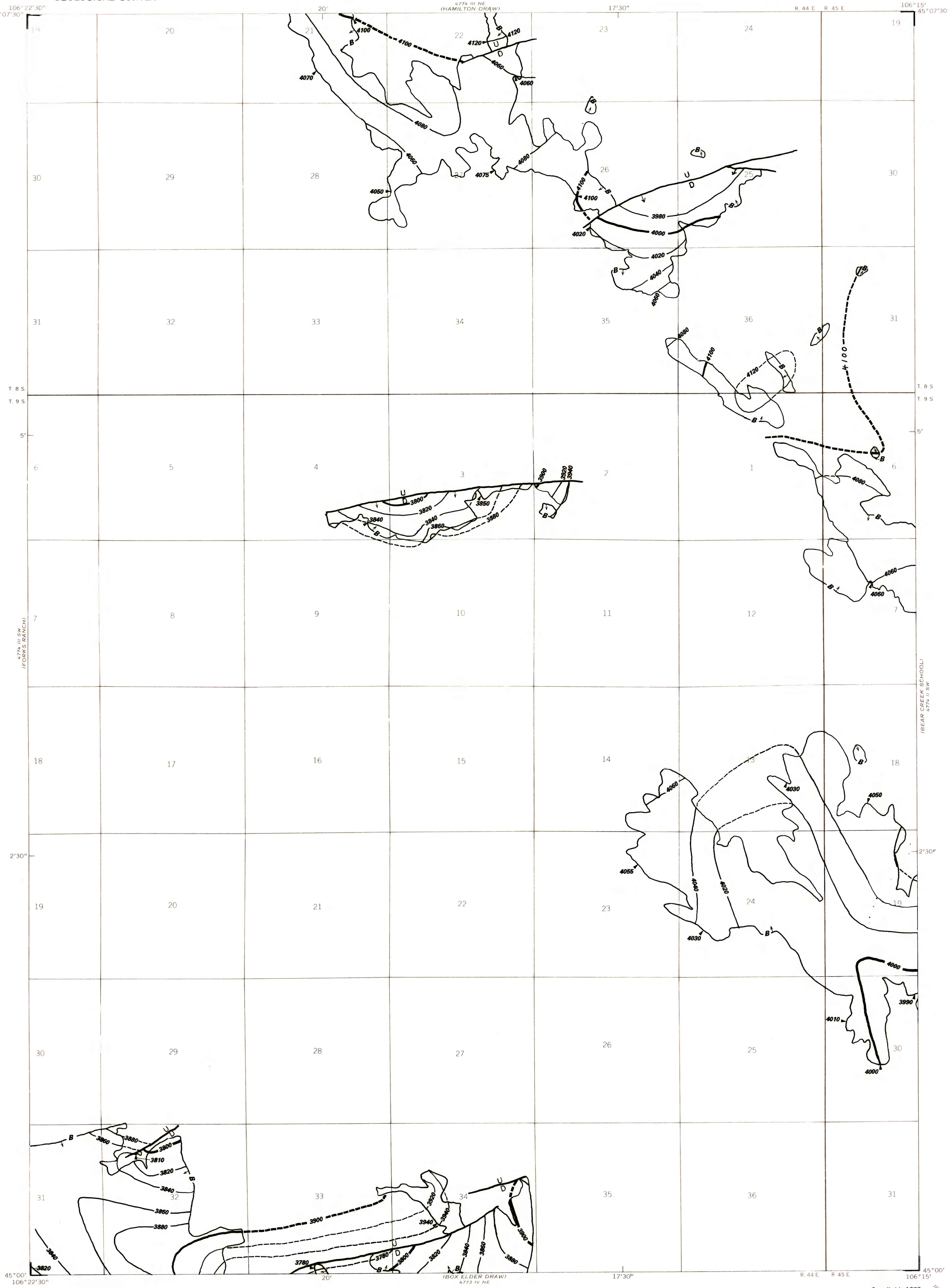


STRUCTURE CONTOURS--Drawn on top of the coal bed. Contour interval 20 feet (6.1 m). Datum is mean sea level. Dashed where projected beyond boundary of coal.



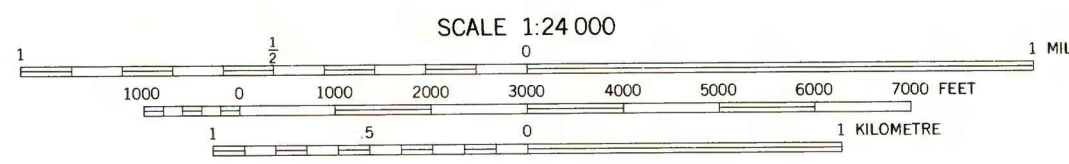
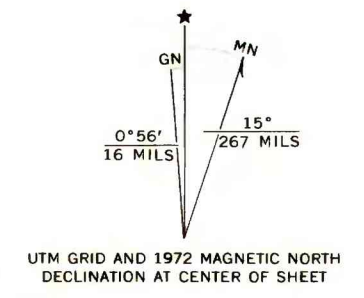
BOUNDARY OF RESERVE BASE COAL--Drawn along the outcrop of the coal bed, the contact between burned and unburned coal, and the fault boundary of the coal where the coal bed is 5 feet (1.5 m) or more thick; and the 5-foot (1.5 m) coal isopach. Arrows point toward area of Reserve Base coal. Number is altitude in feet of top of coal bed at triangle.

To convert feet to meters, multiply by 0.3.



Base from U.S. Geological Survey, 1972

Compiled in 1977



COAL RESOURCE OCCURRENCE AND COAL DEVELOPMENT POTENTIAL MAPS OF THE QUIETUS QUADRANGLE, BIG HORN AND POWDER RIVER COUNTIES, MONTANA

By
W. C. CULBERTSON AND L. N. ROBINSON
1978

PLATE 5
STRUCTURE CONTOUR MAP
OF THE ROLAND OF BAKER (1929)
COAL BED