

**OPEN FILE REPORT**  
This report has not been edited for conformity with U.S. Geological Survey editorial standards or stratigraphic nomenclature.

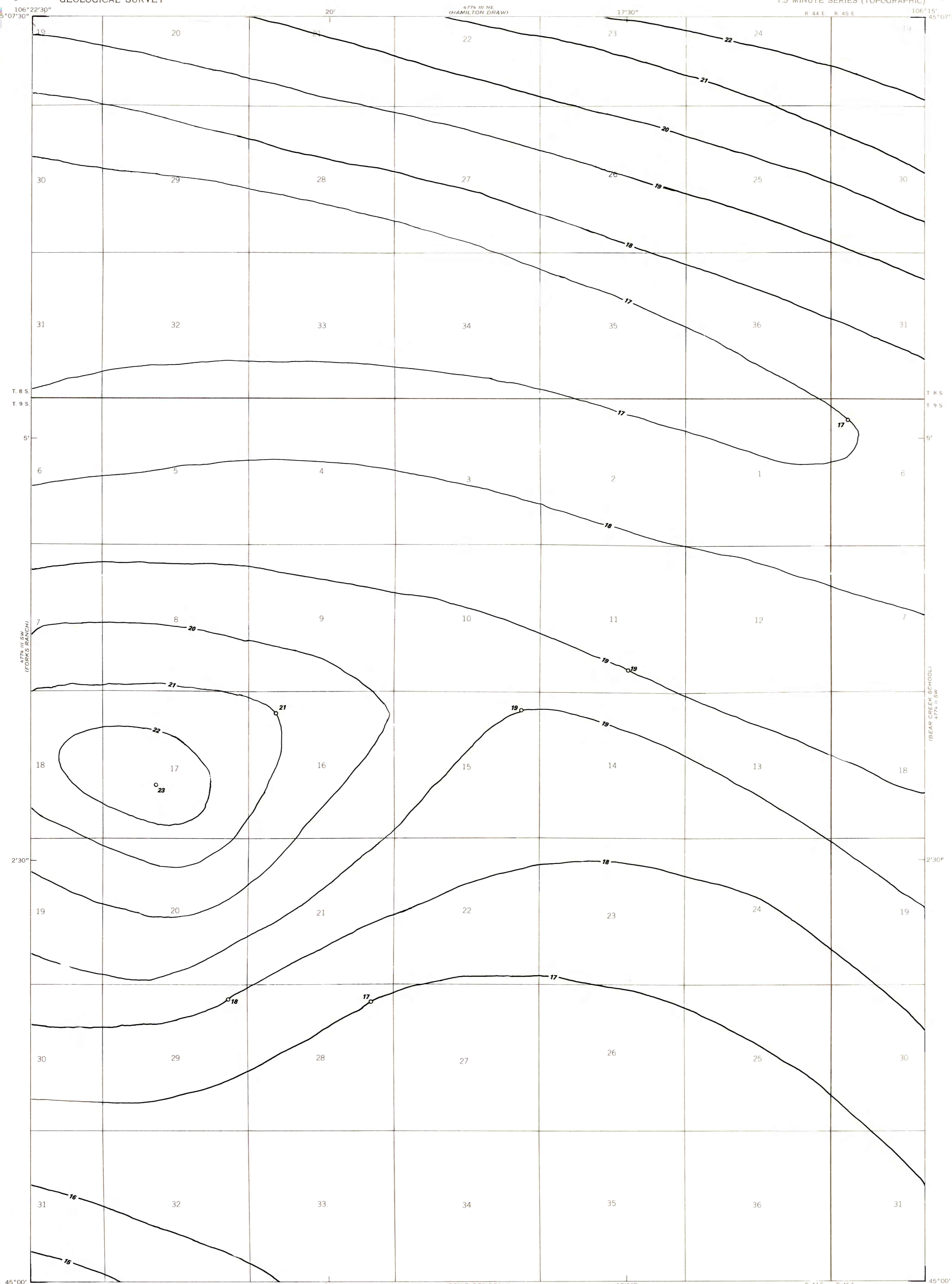
OPEN FILE REPORT 78-654  
PLATE 19 OF 44

EXPLANATION

— 17 —  
ISOPACHS OF THE COAL BED--  
Showing thickness in feet.  
Isopach interval 1 foot.

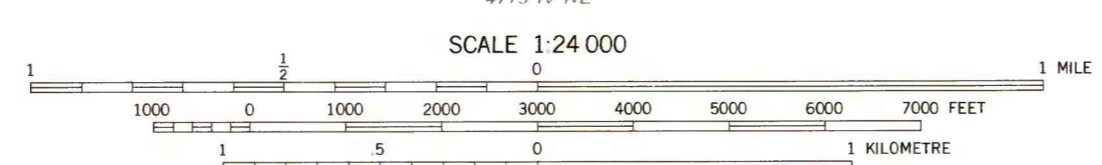
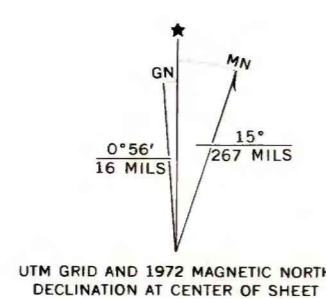
○ 21  
DRILL HOLE--Showing thickness  
of coal bed, in feet.

To convert feet to meters,  
multiply by 0.3.



Base from U.S. Geological Survey, 1972

Compiled in 1977



**COAL RESOURCE OCCURRENCE AND COAL DEVELOPMENT POTENTIAL MAPS OF THE  
QUIETUS QUADRANGLE, BIG HORN AND POWDER RIVER COUNTIES, MONTANA**

By  
**W. C. CULBERTSON AND L. N. ROBINSON**

1978

PLATE 19  
ISOPACH MAP OF THE  
CANYON COAL BED