

44°52'30" N  
106°00' W  
(CABIN CREEK NE)

UNITED STATES  
DEPARTMENT OF THE INTERIOR  
GEOLOGICAL SURVEY

KLINE DRAW QUADRANGLE  
WYOMING—CAMPBELL CO.  
7.5 MINUTE SERIES (TOPOGRAPHIC)

OPEN FILE REPORT 78-831  
PLATE 29 OF 34

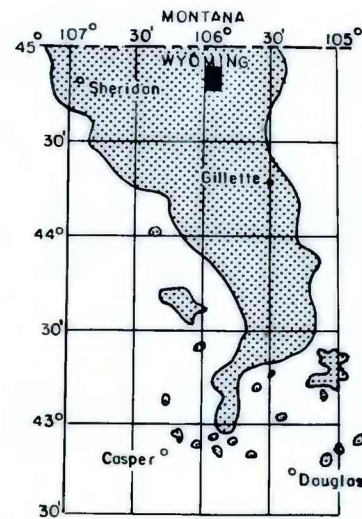
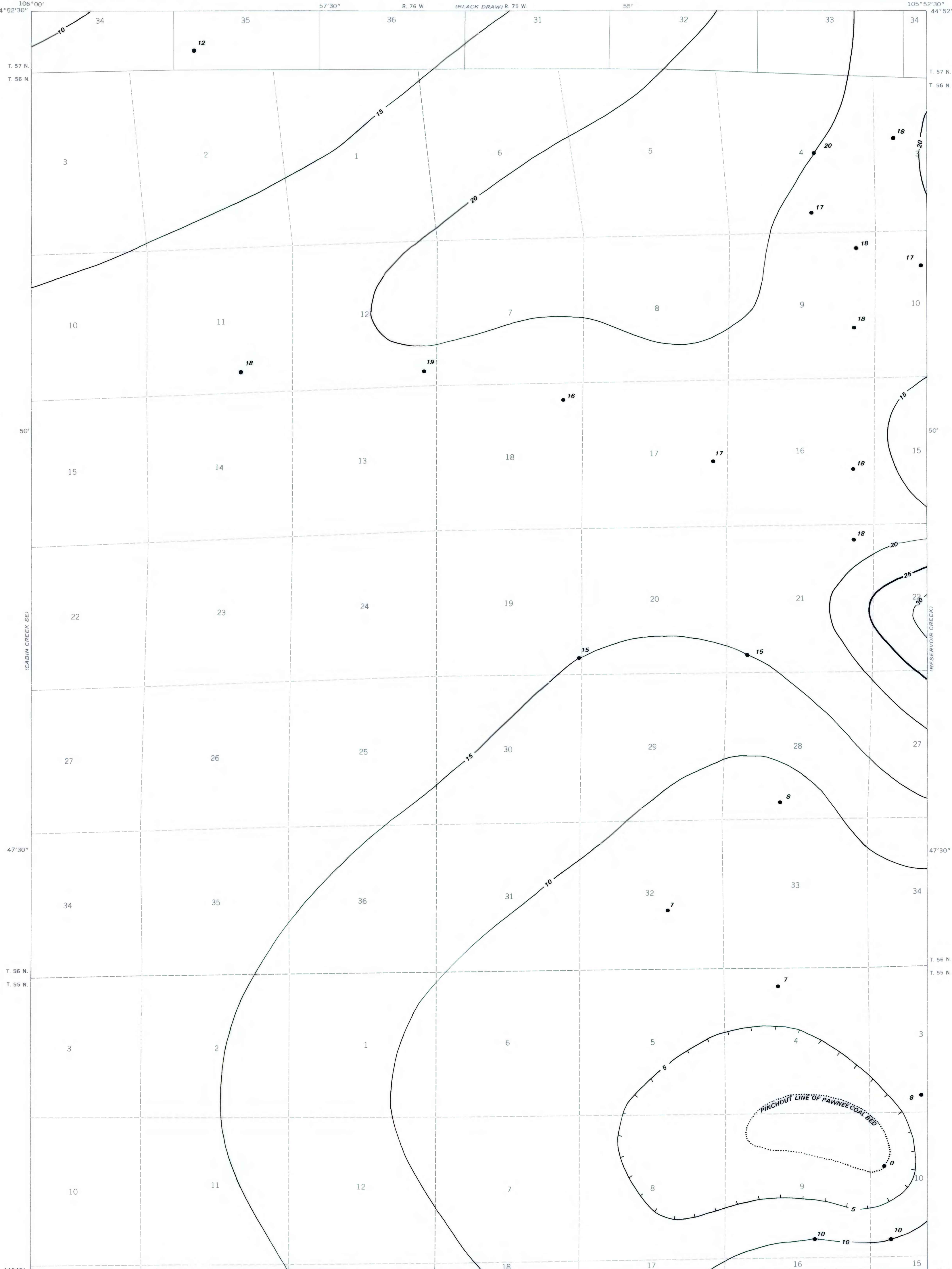
44°52'30" N  
105°52'30" W  
(DEAD HORSE LAKE E)

EXPLANATION

ISOPACHS OF COAL BED—Showing thickness in feet. Isopach interval 5 feet. Hachures indicate localized thinning.

DRILL HOLE—Showing thickness of coal bed, in feet.

To convert feet to meters multiply feet by 0.3048.

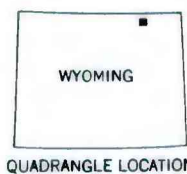
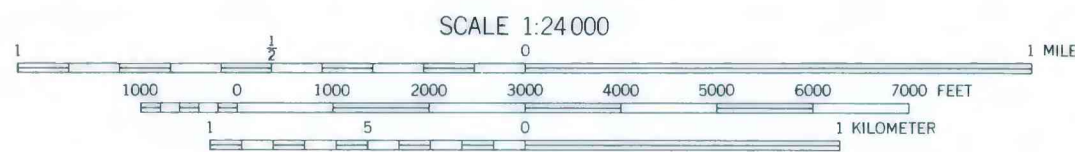
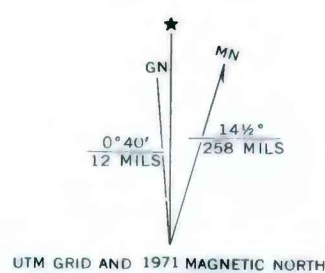


MAP SHOWING LOCATION OF THE KLINE DRAW QUADRANGLE AND THE POWDER RIVER BASIN KNOWN RECOVERABLE COAL RESOURCE AREA (STIPPLED), WYOMING

This report has not been edited for conformity with Geological Survey editorial standards or stratigraphic nomenclature.

44°45' N  
106°00' W  
(CABIN CREEK NE)

Base from U.S. Geological Survey, 1971



COAL RESOURCE OCCURRENCE MAP OF THE KLINE DRAW  
QUADRANGLE, CAMPBELL COUNTY, WYOMING

BY  
IntraSearch  
1978

PLATE 29  
ISOPACH MAP OF THE  
PAWNEE COAL BED