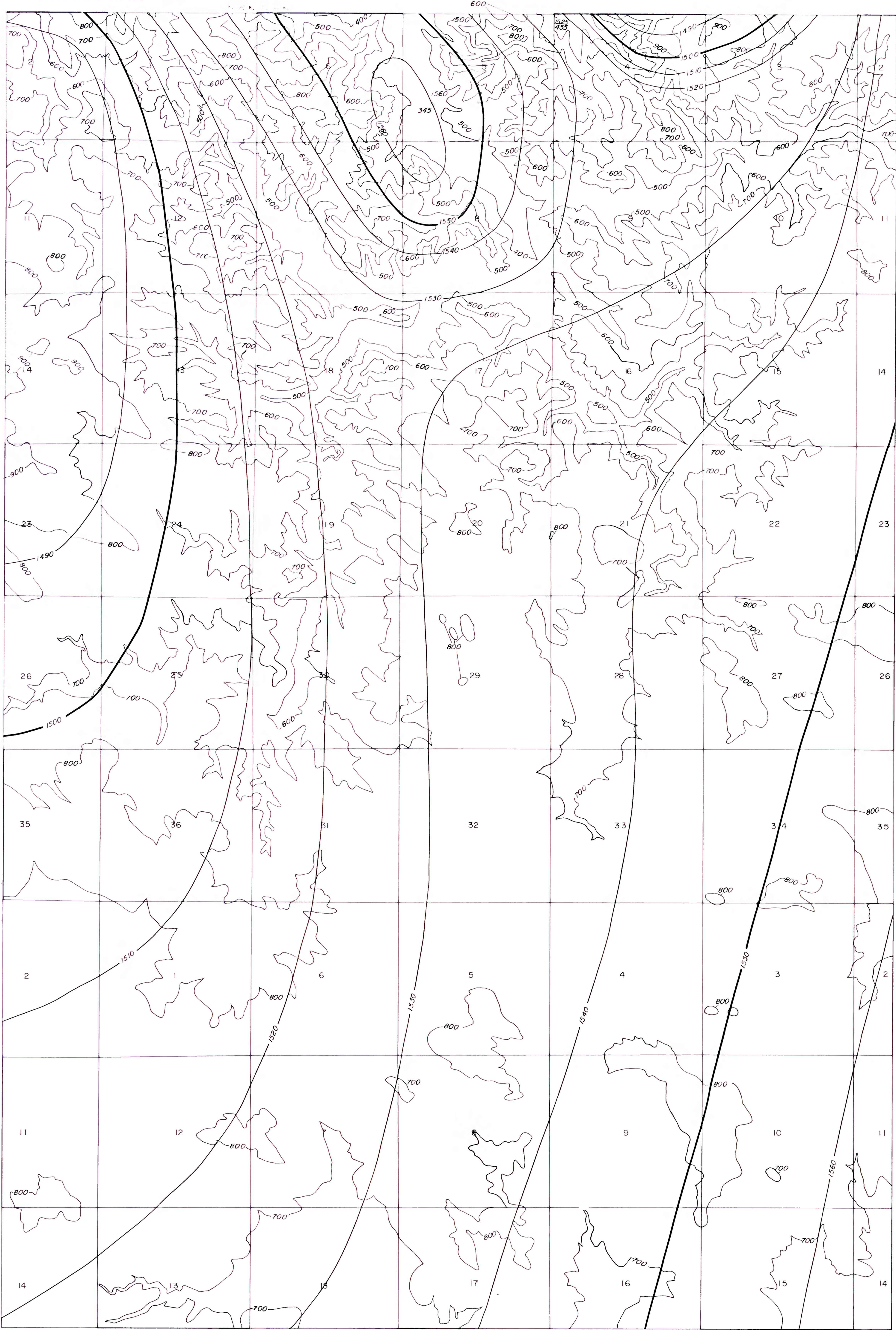
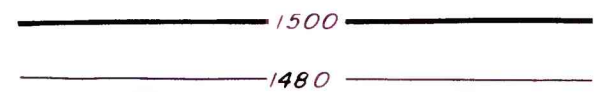


This report has not been edited for
conformity with the standards of
format prescribed in the
Geological Survey Manual



EXPLANATION



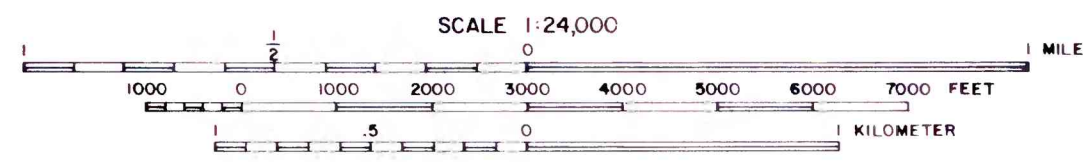
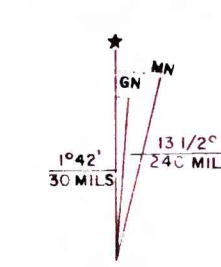
STRUCTURE CONTOURS—Drawn on the top of the coal bed. Long dashed where inferred, short dashed where protected by a mineral-bearing area. Contour interval is 10 feet (1:10). Datum is mean sea level.

OVERBURDEN THICKNESS—Showing thickness of overburden, in feet, from the surface to the top of the coal bed. (Interval is 100 feet (1:100).)

DRILL HOLES—Showing thickness of the coal bed in feet, (upper number). Showing value of mining ratio for the coal bed within stripping limit, (lower number).

To convert feet to meters, multiply feet by 0.3048.

BASE FROM U.S. GEOLOGICAL SURVEY, 1970



COMPILED IN 1978



COAL RESOURCE OCCURRENCE MAP OF THE DUNN CENTER NW QUADRANGLE,
DUNN COUNTY, NORTH DAKOTA
BY
WOODWARD-CLYDE CONSULTANTS
1978