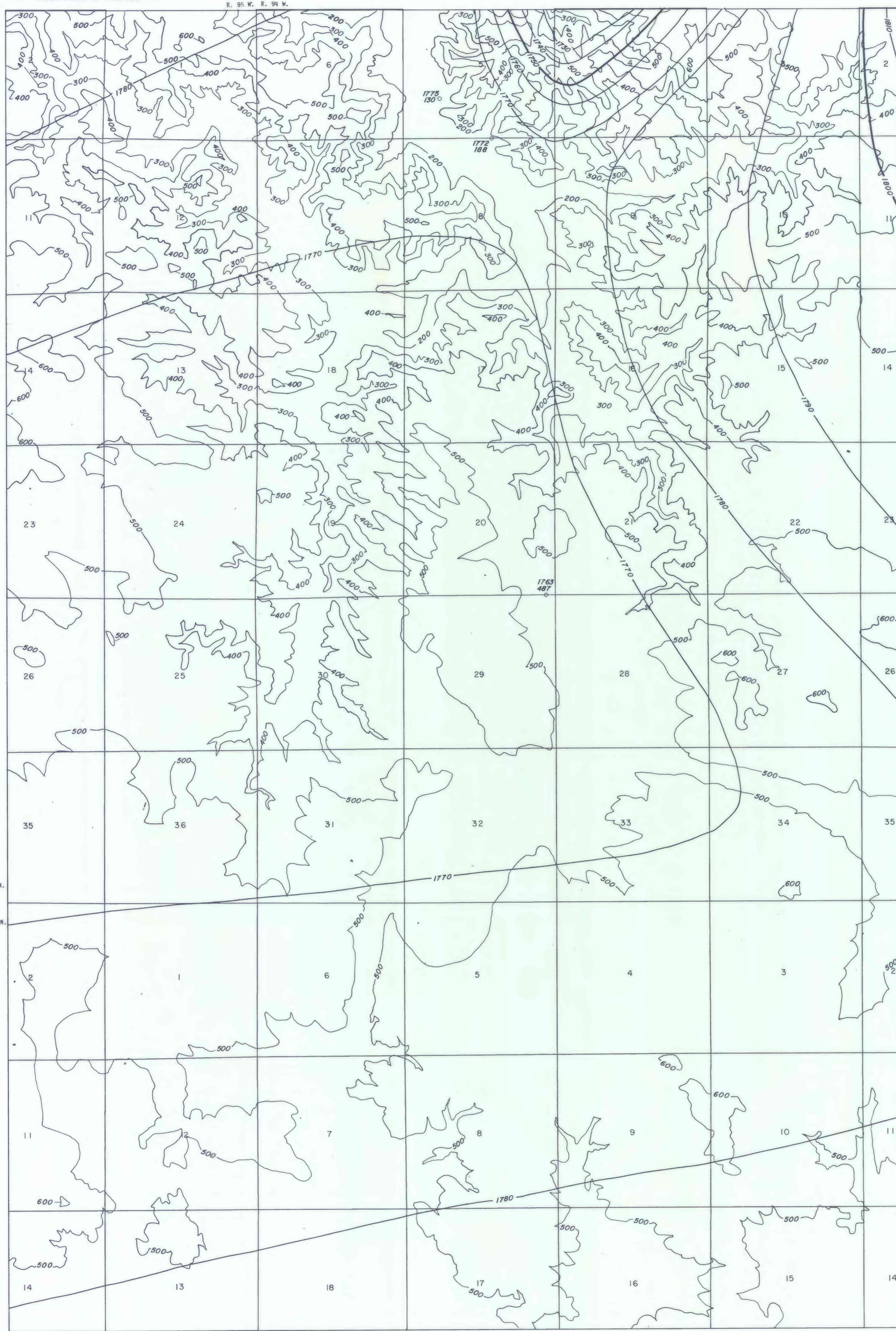
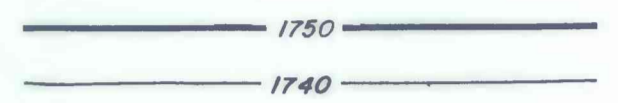


This report has not been edited for conformity with U.S. Geological Survey editorial standards or stratigraphic nomenclature.



EXPLANATION



STRUCTURE CONTOURS--Drawn on the top of the coal bed. Long dashed where inferred, short dashed where projected through noncoal-bearing area. Contour interval is 10 feet (3.1m). Datum is mean sea level.

OVERBURDEN ISOPACH--Showing thickness of overburden, in feet, from the surface to the top of the coal bed. Isopach interval is 100 feet (30.5m).

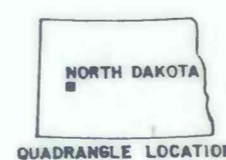
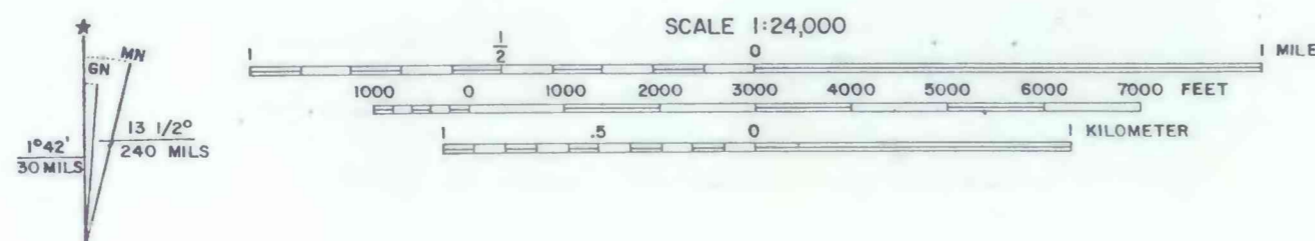
1763
487

DRILL HOLE--Showing elevation of the top of the coal bed in feet. (upper number). Showing thickness of overburden, in feet, from the surface to the top of the coal bed (lower number).

To convert feet to meters, multiply feet by 0.3048.

BASE FROM U.S. GEOLOGICAL SURVEY, 1970

COMPILED IN 1978



COAL RESOURCE OCCURRENCE MAP OF THE DUNN CENTER NW QUADRANGLE,
DUNN COUNTY, NORTH DAKOTA
BY
WOODWARD-CLYDE CONSULTANTS
1978