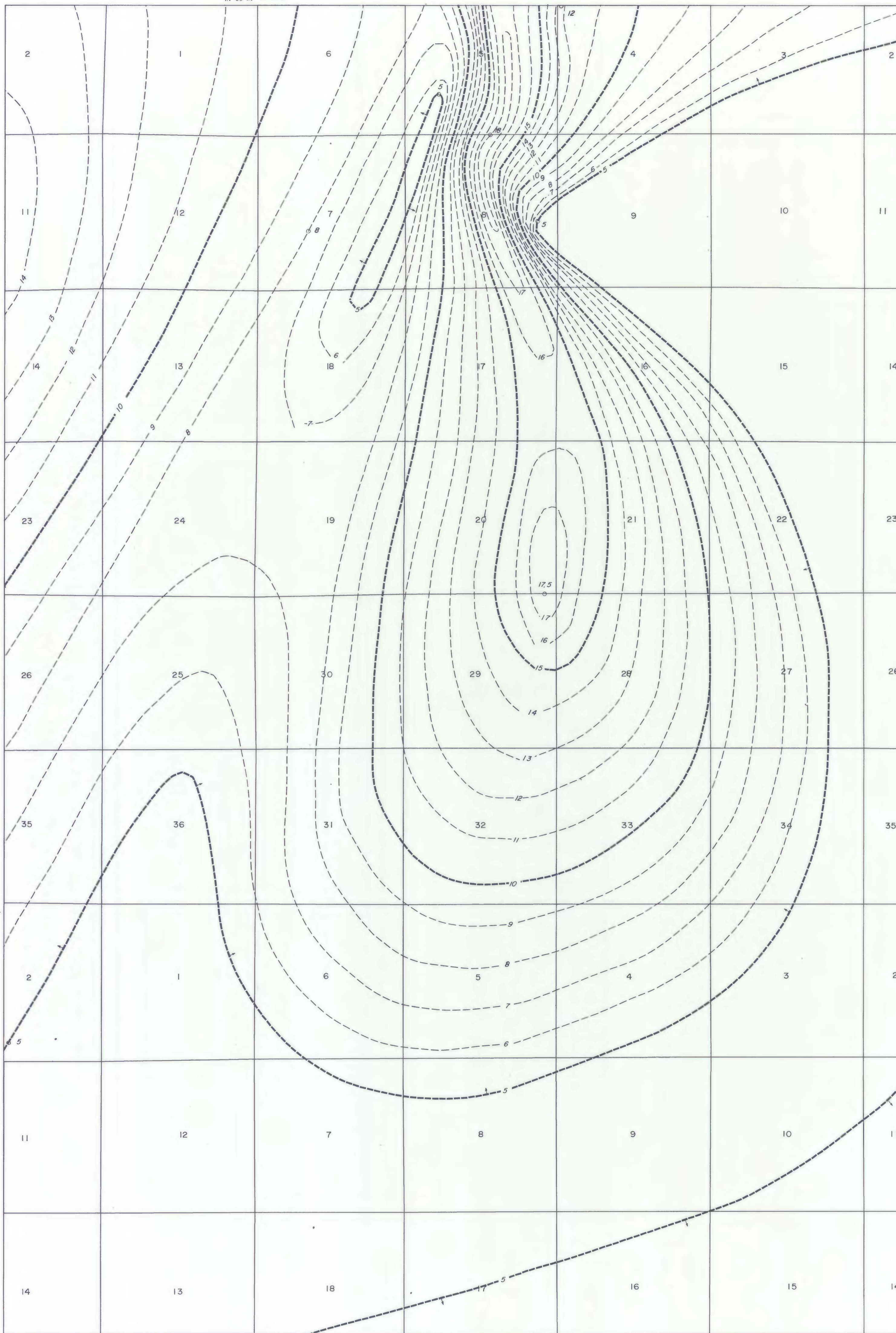


This report has not been edited for conformity with U.S. Geological Survey editorial standards or stratigraphic nomenclature.

R. 95 W. R. 94 W.



EXPLANATION

--- 10 ---  
--- 9 ---  
ISOPACH OF COAL BED--Showing thickness in feet. Isopach interval 1 foot (0.3m). Arrow points toward reserve base coal.

○ 5  
DRILL HOLE--Showing thickness of the coal bed in feet.

To convert feet to meters, multiply feet by 0.3048.

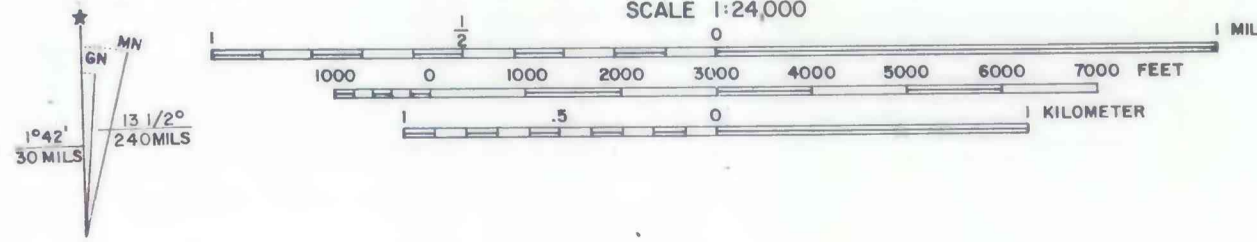
T. 146 N.  
T. 145 N.

T. 146 N.  
T. 145 N.

BASE FROM U.S. GEOLOGICAL SURVEY, 1970

R. 95 W. R. 94 W.

SCALE 1:24,000



COMPILED IN 1978



COAL RESOURCE OCCURRENCE MAP OF THE DUNN CENTER NW QUADRANGLE,  
DUNN COUNTY, NORTH DAKOTA

BY  
WOODWARD-CLYDE CONSULTANTS  
1978

PLATE 15  
ISOPACH MAP  
OF THE HT BUTTE COAL BED