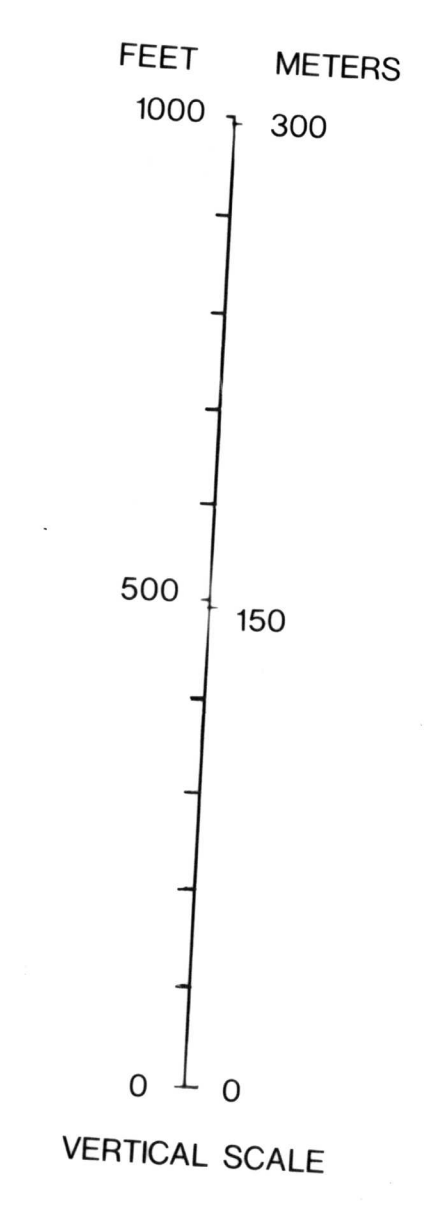
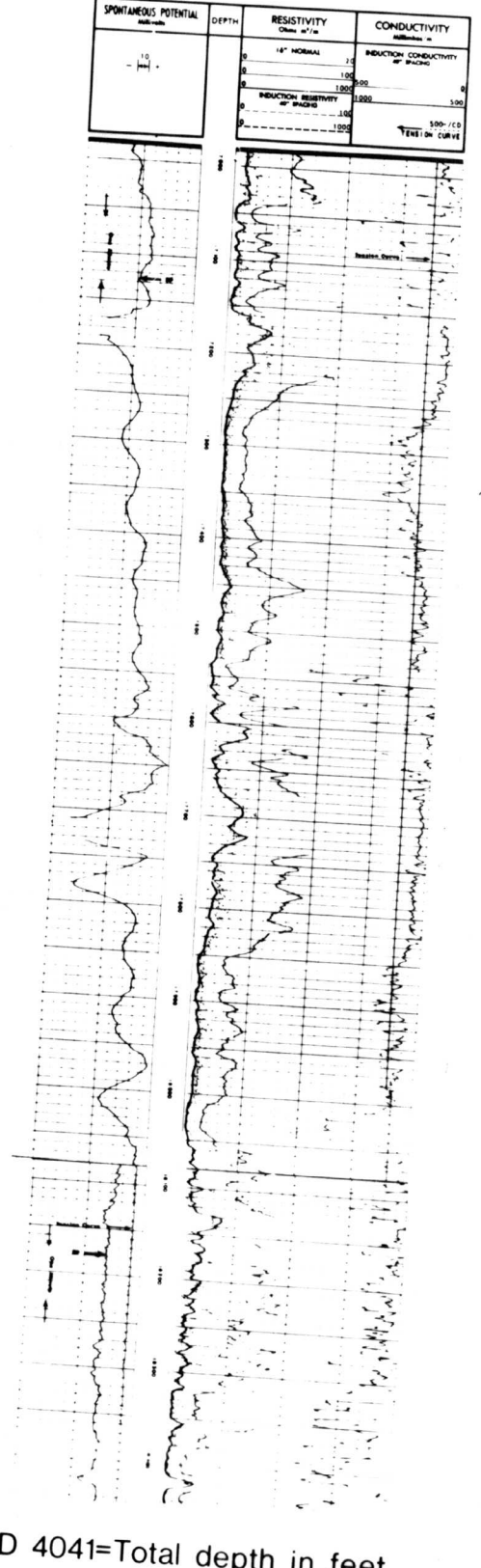


TYPES OF LOGS USED

Left curve - spontaneous potential

Right curves - resistivity and conductivity



- EXPLANATION**
- B- Bentonite correlation marker
 - C- Coal Correlation Marker
 - J- Correlatable stratigraphic horizon
 - Unconformity
 - Indicates interval and number of drill stem test in each hole
 - Cored interval
 - KB 6981- Elevation of Kelly bushing in feet
 - Marginal marine - general environment of deposition for formation
 - PAY ZONE - Producing interval
 - ^{1/} (Nomenclature from Gill, Merewether, and Cobban (1970))
 - ^{1/} Hale (1961)
 - ^{2/} Equivalent of Deep Creek Sandstone Member (Hale, 1961) of Mesaverde Formation
 - Perforation Test-Gross interval
 - Oil well
 - Gas well
 - Dry and abandoned well
 - Producing Well
 - Abandoned Producing Well

REFERENCES

Gill, J. B., Merewether, I. A., and Cobban, W. A., 1970, Stratigraphy and nomenclature of some Upper Cretaceous and lower Tertiary rocks in southern Wyoming. U.S. Geological Survey Professional Paper 667, 53 p.

Hale, L. A., 1961, Late Cretaceous (Dakota) stratigraphy eastern Washakie basin Carbon county, Wyoming. In: Wyoming Geological Association 1961 Annual Field Conference (Boulder, Colorado), Symposium on late Cretaceous rocks Wyoming and adjacent area, p. 129-137.

Miller, F. X., 1977, Biostratigraphic correlation of the Mesaverde Group in southeastern Wyoming and northeastern Colorado. In: Tyler, T. F., ed., Exploration frontiers of the central and southern basins. Wyoming Geological Association, Fall field conference, Steamboat, Colorado, 1977, Symposium, p. 117-119.

Tyler, T. F., 1978, Preliminary chart and electric log correlation section A-A' of some Upper Cretaceous and Tertiary rocks, Washakie basin, Wyoming. U.S. Geological Survey Open-File Report 78-703, 2 p.

PRELIMINARY CHART SHOWING ELECTRIC LOG CORRELATION SECTION B-B' OF SOME UPPER CRETACEOUS AND TERTIARY ROCKS, WASHAKIE BASIN, WYOMING

By
THEODORE F. TYLER
1978