

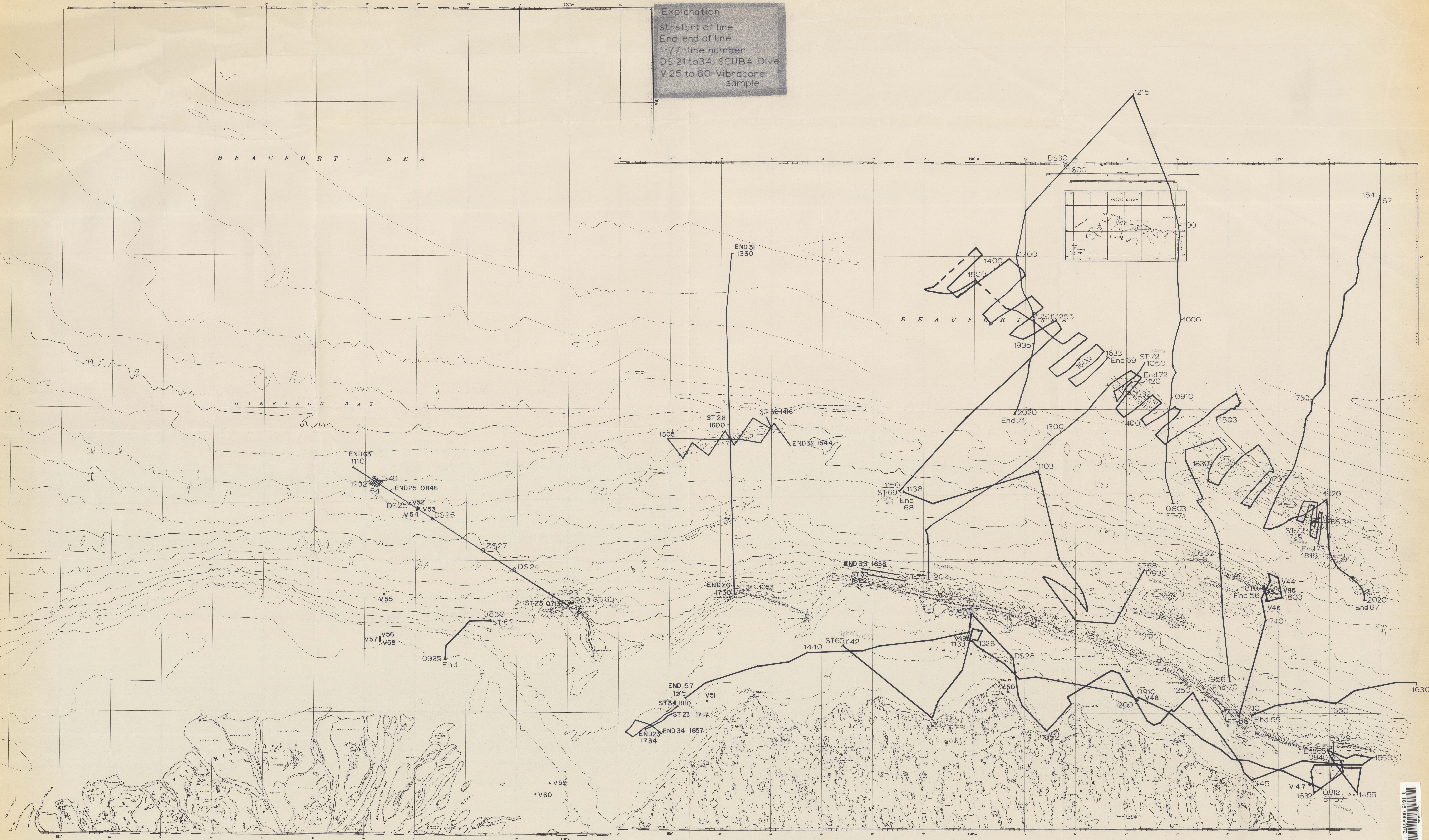
Plate 3 of 4  
Open File 78-1066  
Tracklines-1977

DEPARTMENT OF THE INTERIOR  
UNITED STATES GEOLOGICAL SURVEY

This report is preliminary and has  
not been edited or reviewed for  
conformity with Geological Survey  
standards and nomenclature.

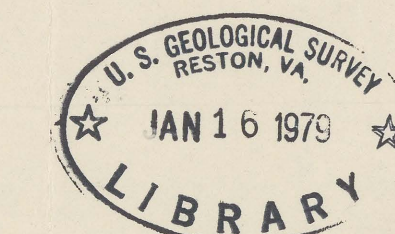
COMPILED BY DK MAURER & D.M. McDOWELL

Explanation  
st-start of line  
End-end of line  
1-77-line number  
DS-21 to 34- SCUBA Dive  
V-25 to 60-Vibracore  
sample



SCALE 1:80,000

Base from C.G.S. Charts, 1:50,000 series: 9467, 3rd  
Ed. June 10/68; 9468, 3rd Ed. June 24/68; 9469, 3rd  
Ed. June 10/68; 9470, 3rd Ed. Aug 12/68; 9471 3rd  
Ed. June 10/68; 9472, 3rd Ed. June 10/68; 9473 3rd  
Ed. June 24/68; Alaska - Arctic Coast, Compiled, Base  
Map Unit, Menlo Park, 4-271 (3-35)  
Sounding in feet.



M(09) 534  
1700 m  
Sheet 3  
Copy 1

M(200)  
R290  
78-1066  
543

78-1066 m 02