

DEPARTMENT OF THE INTERIOR
UNITED STATES GEOLOGICAL SURVEY

R. 3 W.

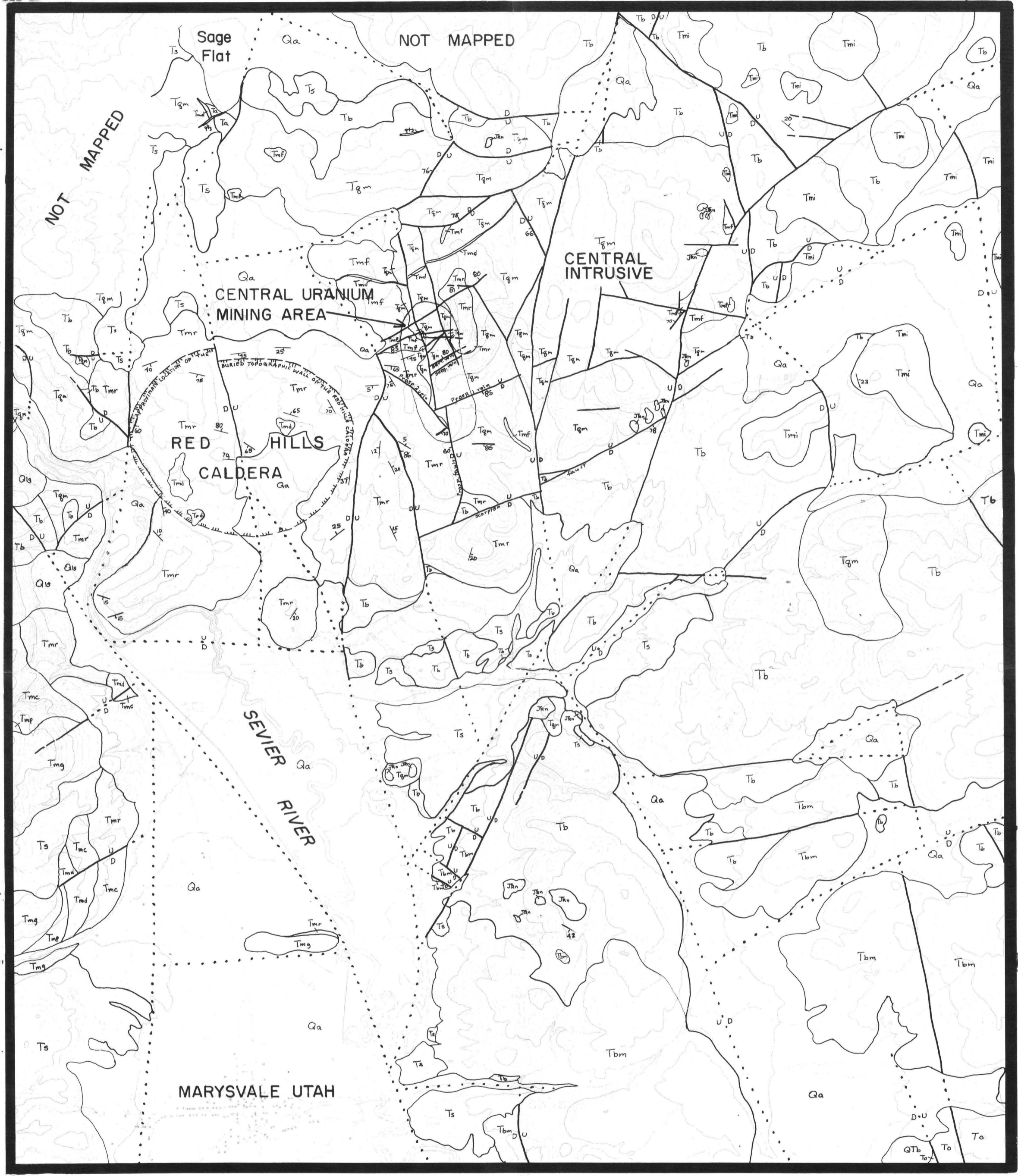
112°10'

T. 26 S.

38°30'

T. 27 S.

38°27'30"



112°15'

R. 3 W.

112°10'

Base from U.S. Geological Survey,
Marysville NW and Monroe SW, 1977

Geology by C. G. Cunningham and T. A. Steven, 1978

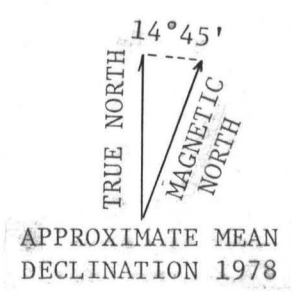
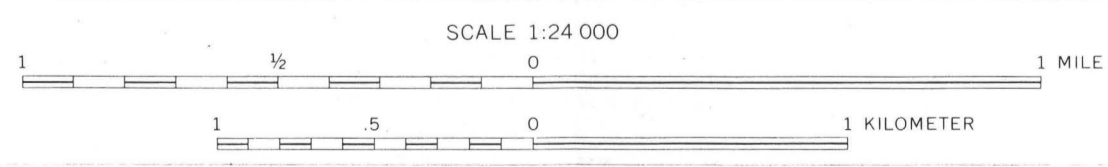


FIGURE I.--GEOLOGIC MAP OF THE CENTRAL URANIUM MINING AREA, MARYSVALE, UTAH