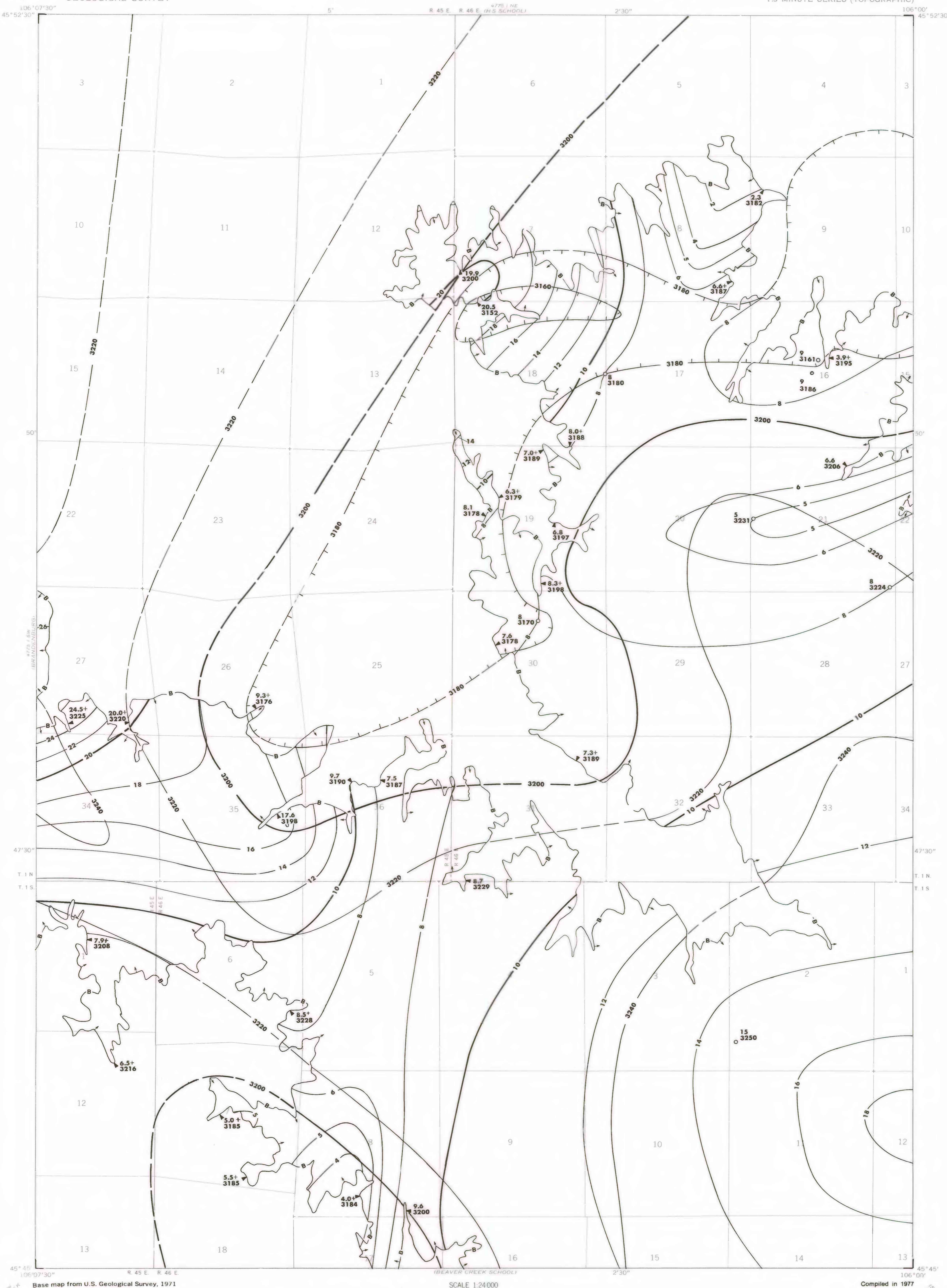


OPEN FILE REPORT
This report has not been edited for conformity with
U.S. Geological Survey editorial standards or
stratigraphic nomenclature.

EXPLANATION

- 20 —
— 18 —
- ISOPACHS OF THE COAL BED—Showing thickness, in feet. Isopach interval 2 feet with an intermediate 6-foot isopach.
- 3180 —
— 3200 —
— 3220 —
- STRUCTURE CONTOURS—Drawn on the top of the coal bed. Dashed where projected beyond boundary of coal. Hachures indicate a closed depression. Contour interval 20 feet (6.1 m). Datum is mean sea level.
- 20.0+ —
— 3220 —
- BOUNDARY OF COAL DEPOSIT—Drawn along the outcrop of coal bed and/or the contact between burned and unburned coal (dashed where inferred by present author beyond the limits of original data). Arrows point toward coal-bearing area. Numbers are coal bed thickness and altitude on top of the coal bed, measured in feet. Plus (+) sign after number indicates incomplete measurement.
- 15
○ 3250
- DRILL HOLE—Showing thickness and altitude at the top of the coal bed, in feet.
- To convert feet to meters, multiply feet by 0.3048.



**COAL RESOURCE OCCURRENCE MAP OF THE HAYES POINT QUADRANGLE,
CUSTER AND POWDER RIVER COUNTIES, MONTANA
BY
COLORADO SCHOOL OF MINES RESEARCH INSTITUTE
1979**